

Future City Parks



Kyle Vista Park and Recreation Center

The Kyle Vista Park and Recreation Center will be the first public park in the north-eastern section of Kyle and Hays County. This large park (46 acres) is located near the north-western intersection of Dacy Lane and Bebee Rd. ([click for map](#))

Recreation Center Renderings

View slideshow at bottom of page

Oso Oro Park at Linebarger Lake

This park, when developed, will open the Linebarger Lake to the public. Located on Creekside Trail, east of IH-35 and north of FM-150, this 5 acre tract will provide access to the 50 acres of trails, fishing and parking to the award-winning Plum Creek Preserve & Nature Trail. ([click for map](#))

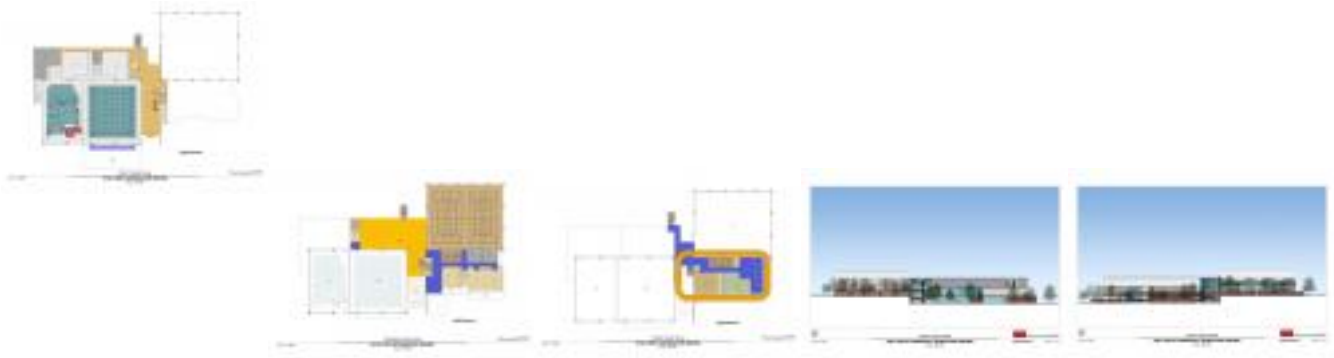
Dacy Lane Community Garden

Located just between Seton Hospital and Bunton Creek, and just west of Dacy Lane, this 8 acre tract has been set aside for a future community garden or some similar use. Being within a flood-plain prohibits typical park development, but provides proper soil conditions for plant growth. ([click for map](#))

Click any thumbnail image to view a slideshow

Future City Parks

Published on City of Kyle Texas Official Website (<http://www.cityofkyle.com>)



Source URL (retrieved on 2015-01-28 06:11): <http://www.cityofkyle.com/recreation/future-city-parks>