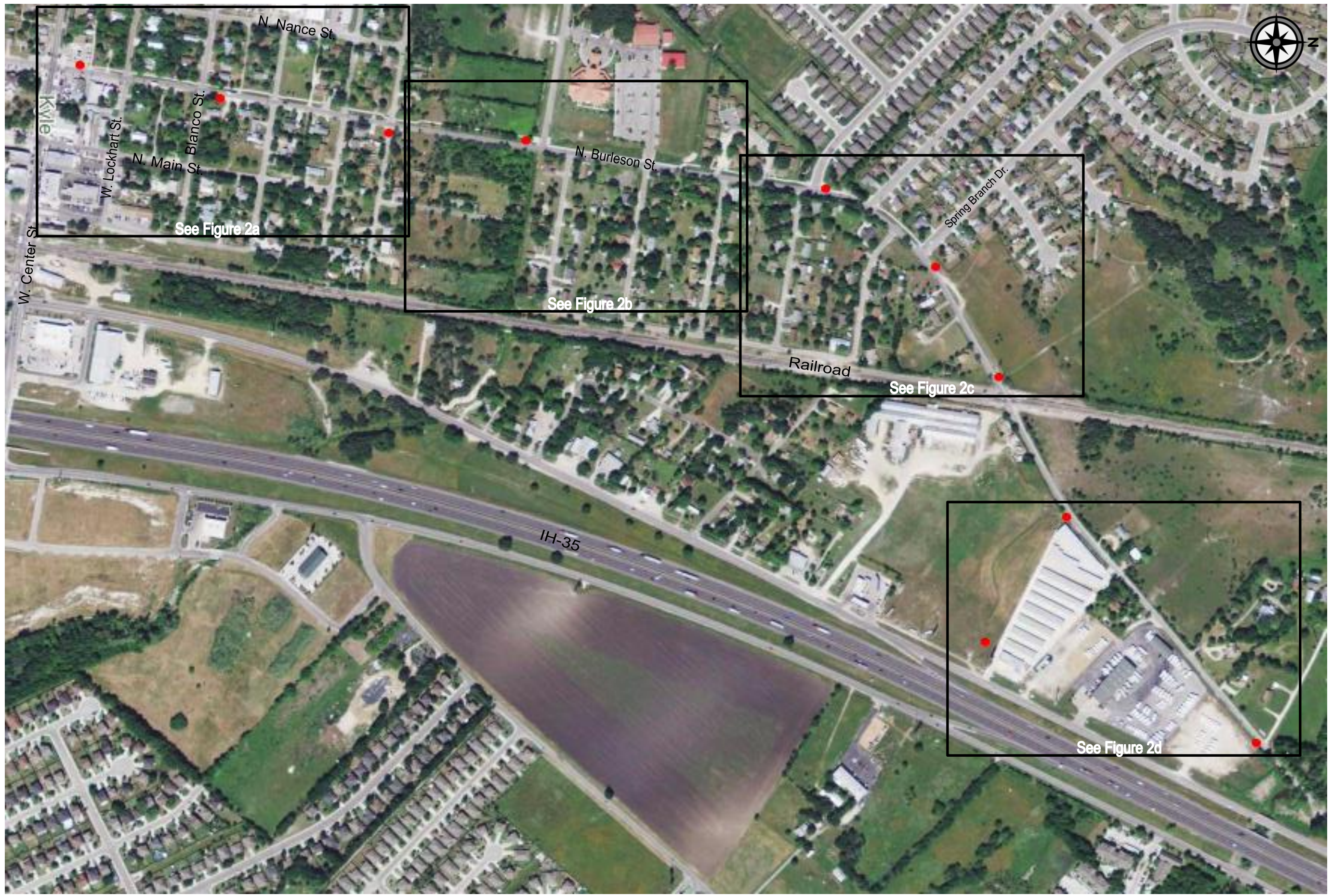


13581 Pond Springs Road, Suite 210, Austin, Texas 78729  
Phone: (512) 428-5550 • Fax: (512) 428-5525

**VICINITY MAP**  
North Burselson Street  
from West Center Street to Market Place Avenue  
Kyle, Texas

Date: June 18, 2014	Job No.: 2013-756
Drawn By: TAS	Checked By: RAR
Approved By: RPG	Scale: N.T.S.

**Figure 1**



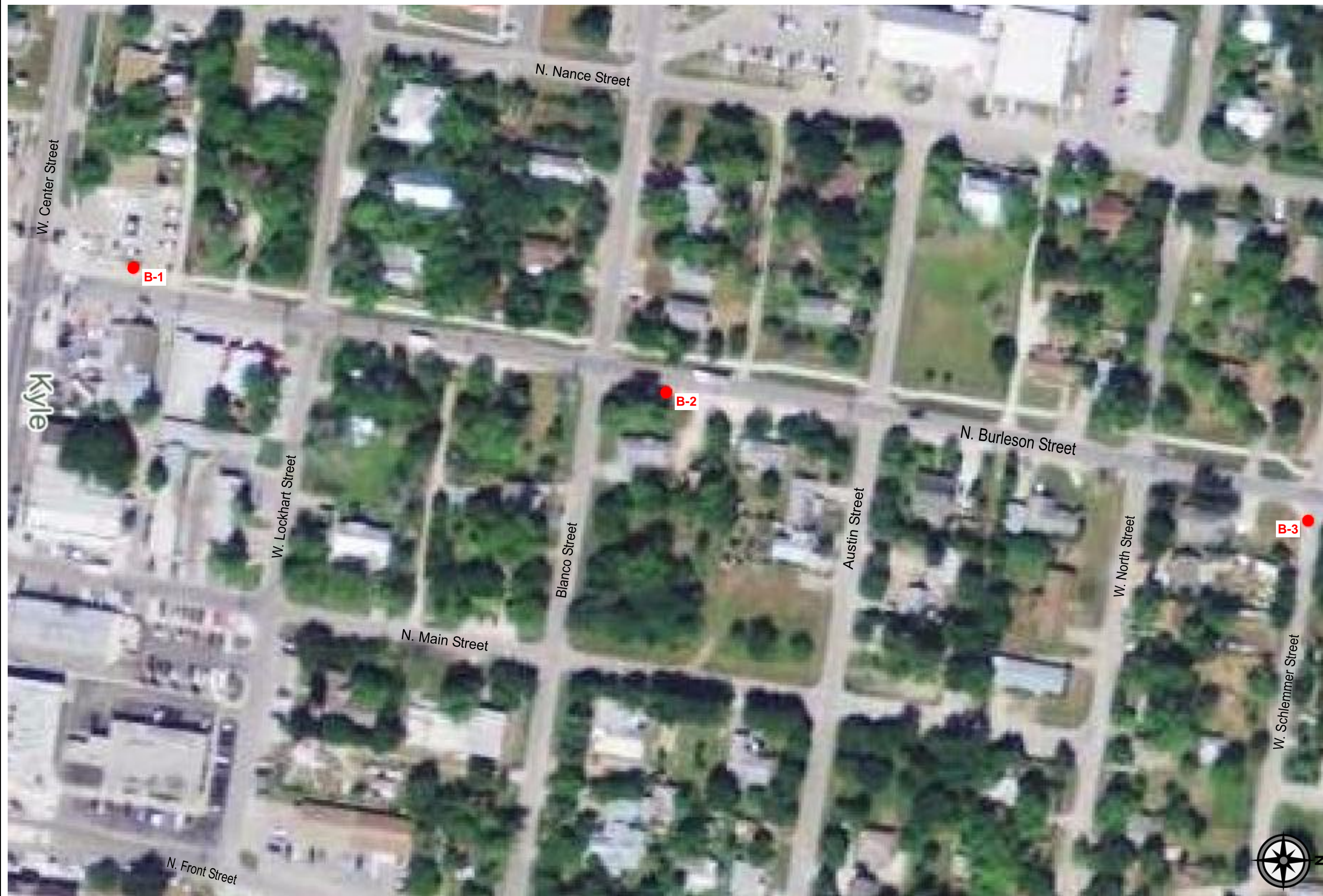
13581 Pond Springs Road, Suite 210, Austin, Texas 78729  
 Phone: (512) 428-5550 • Fax: (512) 428-5525

**OVERALL BORING LOCATION PLAN**

North Burlison Street  
 from West Center Street to Market Place Avenue  
 Kyle, Texas

Job No.:	2013-756
Scale:	N.T.S.
Date:	June 18, 2014
Drawn By:	TAS
Checked By:	RAR
Approved By:	RPG

**Figure 2**  
1 of 1



13581 Pond Springs Road, Suite 210, Austin, Texas 78729  
 Phone: (512) 428-5550 • Fax: (512) 428-5525

**BORING LOCATION PLAN**

North Burleson Street  
 from West Center Street to Market Place Avenue  
 Kyle, Texas

Job No.:	2013-756
Scale:	N.T.S.
Date:	June 18, 2014
Drawn By:	TAS
Checked By:	RAR
Approved By:	RPG

**Figure 2a**  
1 of 4



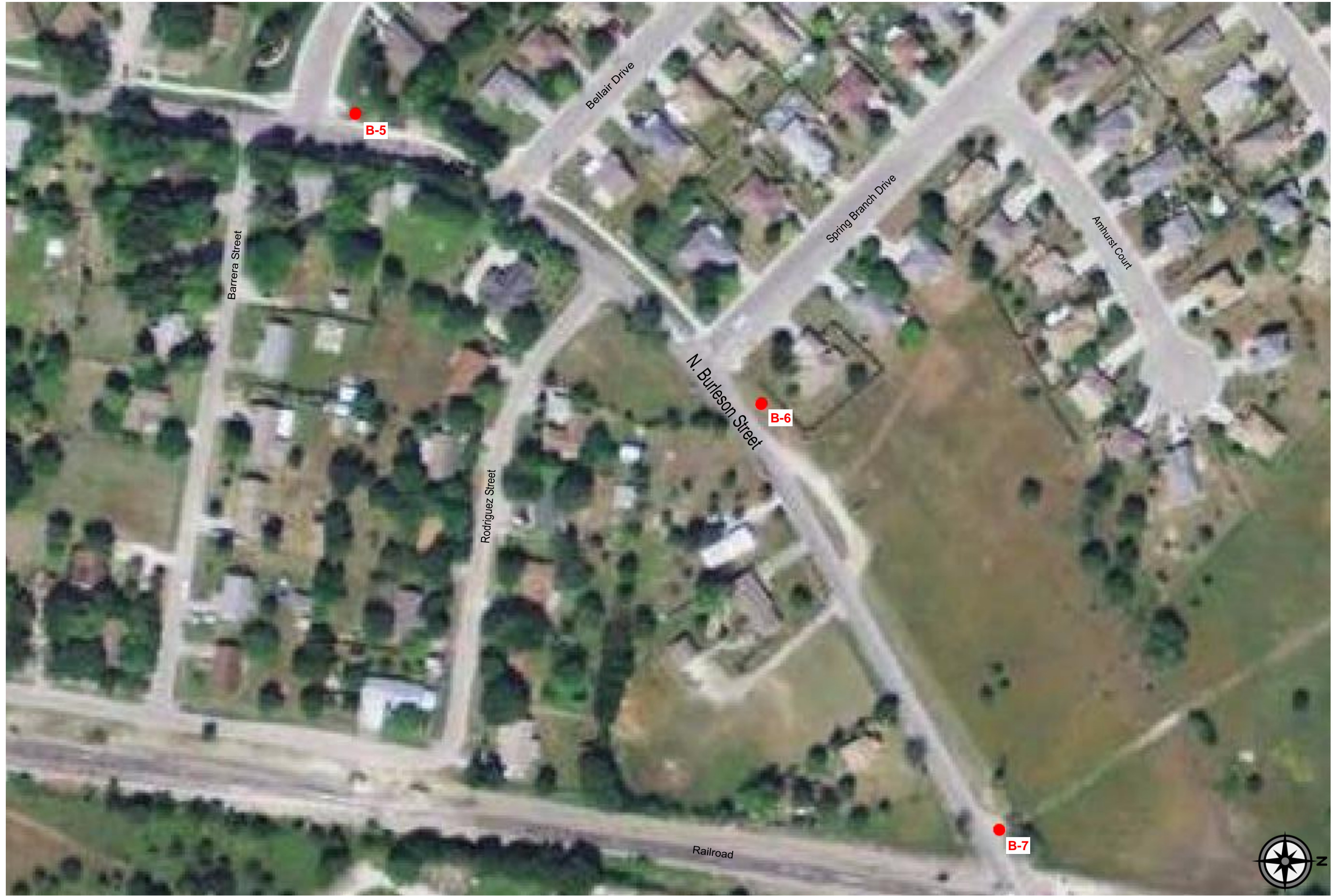
13581 Pond Springs Road, Suite 210, Austin, Texas 78729  
 Phone: (512) 428-5550 • Fax: (512) 428-5525

**BORING LOCATION PLAN**

North Burleson Street  
 from West Center Street to Market Place Avenue  
 Kyle, Texas

Job No.:	2013-756
Scale:	N.T.S.
Date:	June 18, 2014
Drawn By:	TAS
Checked By:	RAR
Approved By:	RPG

**Figure 2b**  
 2 of 4



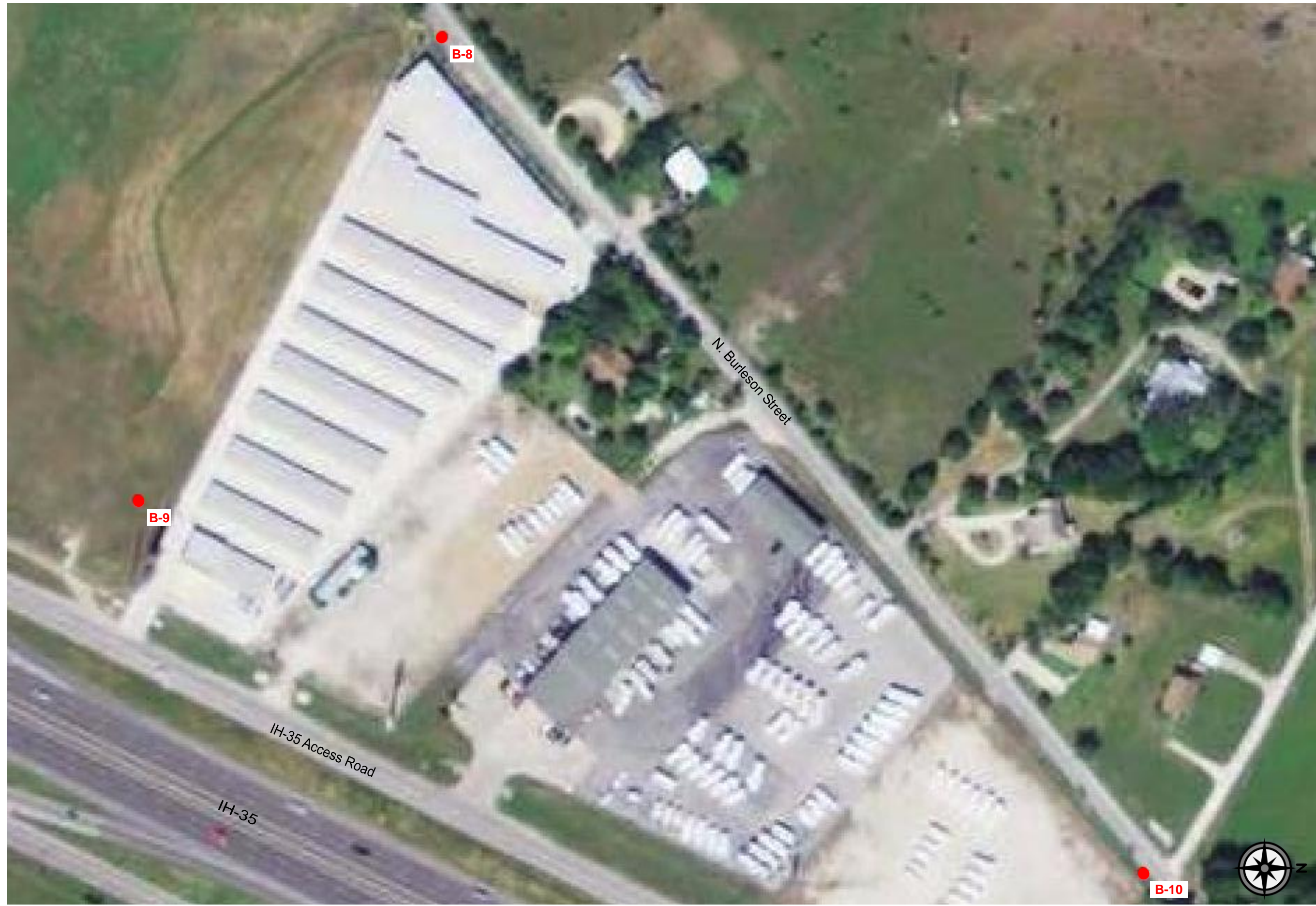
13581 Pond Springs Road, Suite 210, Austin, Texas 78729  
 Phone: (512) 428-5550 • Fax: (512) 428-5525

**BORING LOCATION PLAN**

North Burleson Street  
 from West Center Street to Market Place Avenue  
 Kyle, Texas

Job No.:	2013-756
Scale:	N.T.S.
Date:	June 18, 2014
Drawn By:	TAS
Checked By:	RAR
Approved By:	RPG

**Figure 2c**  
 3 of 4



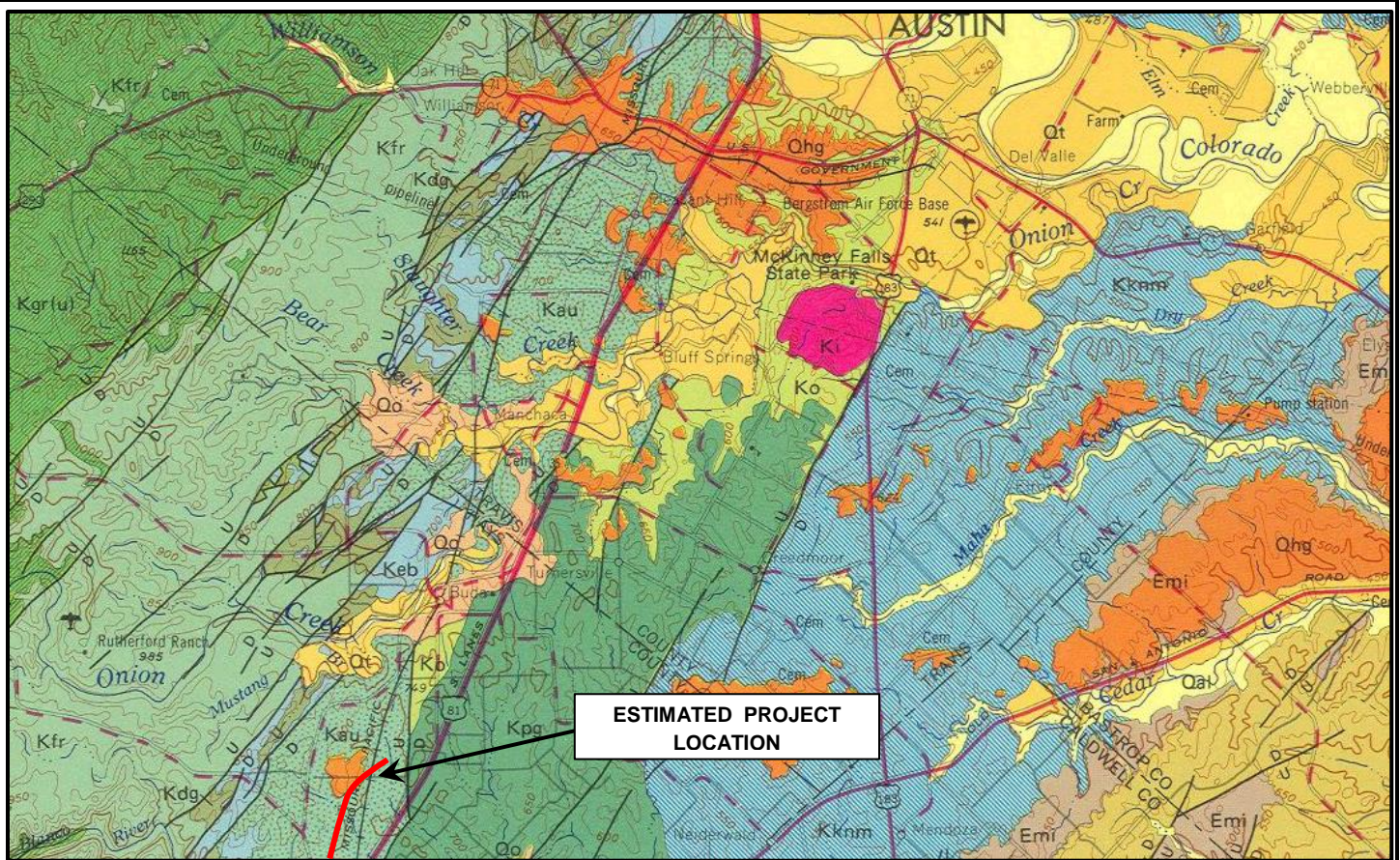
13581 Pond Springs Road, Suite 210, Austin, Texas 78729  
Phone: (512) 428-5550 • Fax: (512) 428-5525

### BORING LOCATION PLAN

North Burleson Street  
from West Center Street to Market Place Avenue  
Kyle, Texas

Job No.: 2013-756
Scale: N.T.S.
Date: June 18, 2014
Drawn By: TAS
Checked By: RAR
Approved By: RPG

**Figure 2d**  
4 of 4




PORTION OF GEOLOGIC ATLAS OF TEXAS  
(Austin Sheet)

**LEGEND**



<u>Symbol</u>	<u>Name</u>	<u>Age</u>
Qal	Alluvium	Quaternary Period / Recent
Qt/Qo/Qhg	Fluviatile Terrace Deposits	Quaternary Period / Pleistocene
Emi	Midway Group	Quaternary Period / Eocene
Kknm	Navarro Formation	Upper Cretaceous Period
Kpg	Pecan Gap Chalk	Upper Cretaceous Period
Kau	Austin Chalk	Upper Cretaceous Period
Keb	Eagle Ford and Buda Limestone	Upper Cretaceous Period
Kdg	Del Rio Clay and Georgetown	Lower Cretaceous Period
Kfr	Fredericksburg Group	Lower Cretaceous Period
Kgr(u)	Glen Rose Formation (Upper)	Lower Cretaceous Period

 Fault Segment with Indication of Relative Movement



13581 Pond Springs Road, Suite 210, Austin, Texas 78729  
Phone: (512) 428-5550 • Fax: (512) 428-5525

**GEOLOGIC MAP**

North Burleson Street  
from West Center Street to Market Place Avenue  
Kyle, Texas

Date: June 18, 2014	Job No.: 2013-756
Drawn By: PPL	Checked By: RAR
Approved By: RPG	Scale: N.T.S.

**Figure 3**