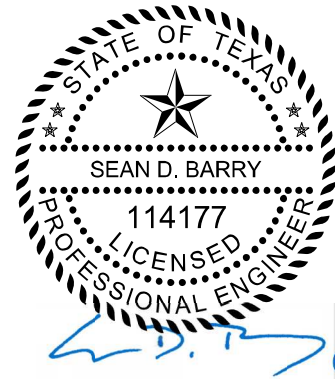


00 91 13.01 ADDENDUM NO. 1

The following additions, deletions, modifications, or clarifications shall be made to the appropriate sections of the Contract Documents. Bidders shall acknowledge receipt of this Addendum in the space provided on the Bid Form.



FREESE AND NICHOLS, INC.
TEXAS REGISTERED
ENGINEERING FIRM
F-2144

BIDDING REQUIREMENTS:

Section 00 42 23 "BID FORM"

Modified Article 5.01.

Modification: Modify the paragraph by deleting "Bidder will complete the Work in accordance with the Contract Documents for the following price(s):" and adding the following: "Bidder will complete the Work in accordance with the Contract Documents for the price(s) shown in 00 42 23.01 "Bid Form Exhibit A.""

Replace 00 42 23.01 "Bid Form Exhibit A" in its entirety. An Excel version of "Bid Form Exhibit A" is provided with this addendum.

Section 00 52 23 "AGREEMENT"

Replaced Article 4.02.

Replace entire section with the following:

"4.02 Days to Achieve Substantial Completion and Final Payment

A. Base Bid

1. The Work will be substantially completed and placed in service in accordance with Paragraph 14.04 of the General Conditions within 504 calendar days after the date when the Contract Times commence to run.
2. The Work will be finally completed and ready for final payment in accordance with Paragraph 14.07 of the General Conditions within 564 calendar days after the date when the Contract Times commence to run.

B. Bid Alternate

1. The Work will be substantially completed and placed in service in accordance with Paragraph 14.04 of the General Conditions within 60 calendar days after the date when the Contract Times commence to run.
2. The Work will be finally completed and ready for final payment in accordance with Paragraph 14.07 of the General Conditions within 90 calendar days after the date when the Contract Times commence to run."

Modified Article 4.03.A.

Modification: Modify the paragraph by deleting "\$500.00 for each day" in both locations it appears in the paragraph and adding the following: "1,000.00 for each day".

Section 01 23 10 "ALTERNATES AND ALLOWANCES"

Modified Article 1.04.A.

Modification: Modify the paragraph by deleting "(None)" and adding the following:

"A. Flagging for Construction within Railroad ROW

1. This allowance is for fees to be charged by Union Pacific Railroad to the Contractor for flagging services during construction within the railroad ROW and foul zone."

DRAWINGS:

REPLACE THE FOLLOWING SHEETS

Replace Sheet	With Sheet
5	5
10K	10K
10L	10L
10M	10M
10N	10N
13	13
16	16
26	26
37	37
73	73
74	74
76	76
205	205

END OF ADDENDUM NO. 1

BID FORM

N. Burleson Street Improvements

TABLE OF ARTICLES

	Page
Article 1 – Bid Recipient	2
Article 2 – Bidder’s Acknowledgements	2
Article 3 – Bidder’s Representations	2
Article 4 – Further Representations	3
Article 5 – Basis of Bid	3
Article 6 – Time of Completion	3
Article 7 – Attachments To This Bid	3
Article 8 – Defined Terms	4
Article 9 – Bid Submittal	4

ARTICLE 1 – BID RECIPIENT

1.01 This Bid is submitted to:

City of Kyle City Hall at 100 West Center Street, Kyle, Texas 78640

1.02 The undersigned Bidder proposes and agrees, if this Bid is accepted, to enter into an Agreement with Owner in the form included in the Bidding Documents to perform all Work as specified or indicated in the Bidding Documents for the prices and within the times indicated in this Bid and in accordance with the other terms and conditions of the Bidding Documents.

ARTICLE 2 – BIDDER’S ACKNOWLEDGEMENTS

2.01 Bidder accepts all of the terms and conditions of the Instructions to Bidders, including without limitation those dealing with the disposition of Bid security. This Bid will remain subject to acceptance for 60 days after the Bid opening, or for such longer period of time that Bidder may agree to in writing upon request of Owner.

ARTICLE 3 – BIDDER’S REPRESENTATIONS

3.01 In submitting this Bid, Bidder represents that:

A. Bidder has examined and carefully studied the Bidding Documents, the other related data identified in the Bidding Documents, and the following Addenda, receipt of which is hereby acknowledged.

<u>Addendum No.</u>	<u>Addendum Date</u>
_____	_____
_____	_____
_____	_____

B. Bidder has visited the Site and become familiar with and is satisfied as to the general, local and Site conditions that may affect cost, progress, and performance of the Work.

C. Bidder is familiar with and is satisfied as to all federal, state and local Laws and Regulations that may affect cost, progress and performance of the Work.

D. Bidder has carefully studied all: (1) reports of explorations and tests of subsurface conditions at or contiguous to the Site and all drawings of physical conditions in or relating to existing surface or subsurface structures at or contiguous to the Site (except Underground Facilities) which have been identified in SC-4.02.

E. Bidder has obtained and carefully studied (or accepts the consequences for not doing so) all additional or supplementary examinations, investigations, explorations, tests, studies and data concerning conditions (surface, subsurface and Underground Facilities) at or contiguous to the Site which may affect cost, progress, or performance of the Work or which relate to any aspect of the means, methods, techniques, sequences, and procedures of construction to be employed by Bidder, including applying the specific means, methods, techniques, sequences, and procedures of construction expressly required by the Bidding Documents to be employed by Bidder, and safety precautions and programs incident thereto.

F. Bidder does not consider that any further examinations, investigations, explorations, tests, studies, or data are necessary for the determination of this Bid for performance of the Work at the price(s) bid and within the times and in accordance with the other terms and conditions of the Bidding Documents.

G. Bidder is aware of the general nature of work to be performed by Owner and others at the Site that relates to the Work as indicated in the Bidding Documents.

- H. Bidder has correlated the information known to Bidder, information and observations obtained from visits to the Site, reports and drawings identified in the Bidding Documents, and all additional examinations, investigations, explorations, tests, studies, and data with the Bidding Documents.
- I. Bidder has given Engineer written notice of all conflicts, errors, ambiguities, or discrepancies that Bidder has discovered in the Bidding Documents, and the written resolution thereof by Engineer is acceptable to Bidder.
- J. The Bidding Documents are generally sufficient to indicate and convey understanding of all terms and conditions for the performance of the Work for which this Bid is submitted.
- K. Bidder will submit written evidence of its authority to do business in the state where the Project is located not later than the date of its execution of the Agreement.

ARTICLE 4 – FURTHER REPRESENTATIONS

4.01 Bidder further represents that:

- A. this Bid is genuine and not made in the interest of or on behalf of any undisclosed individual or entity and is not submitted in conformity with any agreement or rules of any group, association, organization or corporation;
- B. Bidder has not directly or indirectly induced or solicited any other Bidder to submit a false or sham Bid;
- C. Bidder has not solicited or induced any individual or entity to refrain from bidding; and
- D. Bidder has not sought by collusion to obtain for itself any advantage over any other Bidder or over Owner.

ARTICLE 5 – BASIS OF BID

5.01 Bid includes all items necessary to construct the roadway, bridge, drainage, illumination, water line, and sanitary sewer improvements per the plans. Base Bid will be used in determining the lowest bidder for that work. Award of contract does not constitute approval of Bid Alternate 1 or Bid Alternate 2. Bid Alternate 1 or Bid Alternate 2 will be separately approved and awarded to the lowest bidder for the respective Bid Alternate. Bidder will complete the Work in accordance with the Contract Documents for the price(s) shown in 00 42 23.01 “Bid Form Exhibit A.”

Bidder acknowledges that estimated quantities are not guaranteed and are solely for the purpose of comparison of Bids, and final payment for all Unit Price Bid items will be based on actual quantities, determined as provided in the Contract Documents.

ARTICLE 6 – TIME OF COMPLETION

6.01 Bidder agrees that the Work will be substantially complete in accordance with Paragraph 14.04 and will be finally complete and ready for final payment in accordance with Paragraph 14.07.B of the General Conditions on or before the dates or within the number of calendar days indicated in the Agreement.

ARTICLE 7 – ATTACHMENTS TO THIS BID

7.01 The following documents are attached to and made a condition of this Bid:

- A. Bid security;
- B. complete responses to information required in Bid;
- C. the entire Bid with all blanks filled in completely.

ARTICLE 8 – DEFINED TERMS

8.01 Not Used.

ARTICLE 9 – BID SUBMITTAL

9.01 This Bid submitted by:

Bidder (typed or printed): _____

By: _____
(Authorized Signature)

Title: _____

Date: _____

Business Address: _____

Telephone Number: _____

Fax Number: _____

E-Mail Address: _____

00 42 23.01 "Bid Form Exhibit A"

City of Kyle - N. Burseson Street Improvements

Basis of Bid

BASE BID

Item No.	Spec Item	Description	Unit	Estimated Quantity	Unit Price	Extended Amount
1	TxDOT 100 6002	PREPARING ROW	STA	66		
2	TxDOT 104 6015	REMOVING CONC (SIDEWALKS)	SY	200		
3	TxDOT 106 6002	OBLITERATING ABANDONED ROAD	SY	1,053		
4	TxDOT 110 6001	EXCAVATION (ROADWAY)	CY	13,662		
5	TxDOT 110 6002	EXCAVATION (CHANNEL)	CY	40		
6	TxDOT 110 6003	EXCAVATION (POND)	CY	9,800		
7	TxDOT 132 6005	EMBANKMENT (FINAL) (ORD COMP) (TY C)	CY	1,790		
8	TxDOT 160 6003	FURNISHING AND PLACING TOPSOIL (4")	SY	17,142		
9	TxDOT 162 6002	BLOCK SODDING	SY	9,195		
10	TxDOT 162 6002	BLOCK SODDING - BUFFALOGRASS	SY	445		
11	TxDOT 164 6027	CELL FBR MLCH SEED (PERM) (URBAN) (CLAY)	SY	17,142		
12	TxDOT 166 6002	FERTILIZER	TON	4		
13	TxDOT 168 6001	VEGETATIVE WATERING	MG	140		
14	TxDOT 192 6002	PLANT MATERIAL (1-GAL)	EA	102		
15	TxDOT 192 6003	PLANT MATERIAL (3-GAL)	EA	376		
16	TxDOT 192 6004	PLANT MATERIAL (5-GAL)	EA	71		
17	TxDOT 192 6015	LANDSCAPE EDGE	LF	710		
18	TxDOT 192 6018	PLANT MATERIAL (2-GAL)	EA	653		
19	TxDOT 192 6024	PLANT MATERIAL (30 GAL) (TREE)	EA	1		
20	TxDOT 192 6026	PLANT MATERIAL (65 GAL) (TREE)	EA	12		
21	TxDOT 247 6366	FL BS (CMP IN PLC) (TY A GR 5) (FNAL POS) (10")	CY	4,226		
22	TxDOT 247 6366	FLEXIBLE BASE (GRAVEL PAVEMENT REPAIR)	SY	20		
23	TxDOT 260 6002	LIME (HYDRATED LIME (SLURRY))	TON	627		
24	TxDOT 260 6009	LIME TRT (SUBGRADE)(10")	SY	25,325		
25	TxDOT 310 6005	PRIME COAT (AE-P)(0.20 GAL/SY)	GAL	5,069		
26	TxDOT 341 6008	D-GR HMA TY-B PG64-22 (3")	TON	3,580		
27	TxDOT 341 6008	D-GR HMA TY-B PG64-22 (8")	TON	1,592		
28	TxDOT 341 6030	D-GR HMA TY-C SAC-B PG76-22 (2")	TON	2,385		
29	TxDOT 341 6030	D-GR HMA TY-C SAC-B PG76-22 (2") (OVERLAY)	TON	309		
30	TxDOT 341 6030	D-GR HMA TY-C SAC-B PG76-22 (LEVEL UP)	TON	100		
31	TxDOT 341 6030	D-GR HMA TY-C SAC-B PG76-22 (3")	TON	689		
32	TxDOT 341 6030	D-GR HMA TY-C SAC-B PG76-22 (PAVEMENT REPAIR)	SY	32		
33	TxDOT 354 6045	PLANE ASPH CONC PAV (2")	SY	2,682		
34	TxDOT 400 6002	STRUCTURAL EXCAVATION	CY	13,098		
35	TxDOT 402 6001	TRENCH EXCAVATION PROTECTION	LF	4,900		
36	TxDOT 420 6007	CONCRETE (DROP STRUCTURE)	CY	40		
37	TxDOT 420 6007	CONCRETE (APRON W BAFFLE BLOCS)	CY	65		
38	TxDOT 420 6007	CONCRETE (PILOT CHANNEL)	CY	45		
39	TxDOT 420 6007	CONCRETE (RAIN GARDEN)	CY	55		
40	TxDOT 420 6007	CONCRETE (POND HEADWALLS AND APRONS)	CY	45		
41	TxDOT 422 6001	REIN CONC SLAB	SF	255		
42	TxDOT 423 6001	RETAINING WALL (MSE)	SF	5,418		

City of Kyle - N. Burleson Street Improvements

Basis of Bid

BASE BID

Item No.	Spec Item	Description	Unit	Estimated Quantity	Unit Price	Extended Amount
43	TxDOT 423 6008	RETAINING WALL (CAST-IN-PLACE)	SF	1,076		
44	TxDOT 432 6002	RIPRAP (CONC) (5 IN)	CY	150		
45	TxDOT SP 432	RIPRAP (MITERED SLOPE)	CY	15		
46	TxDOT 450 6042	RAIL (TY PR1)	LF	608		
47	TxDOT 450 6051	RAIL (HANDRAIL) (TY E)	LF	24		
48	TxDOT 462 6004	CONC BOX CULV (4 FT X 3 FT)	LF	1,837		
49	TxDOT 462 6012	CONC BOX CULV (6 FT X 5 FT)	LF	54		
50	TxDOT 462 6021	CONC BOX CULV (8 FT X 6 FT)	LF	106		
51	TxDOT 464 6001	RC PIPE (CL III) (12 IN)	LF	33		
52	TxDOT 464 6003	RC PIPE (CL III) (18 IN)	LF	893		
53	TxDOT 464 6005	RC PIPE (CL III) (24 IN)	LF	651		
54	TxDOT 464 6008	RC PIPE (CL III) (36 IN)	LF	140		
55	TxDOT 464 6017	RC PIPE (CL IV) (18 IN)	LF	1,389		
56	TxDOT 464 6018	RC PIPE (CL IV) (24 IN)	LF	133		
57	TxDOT 464 6020	RC PIPE (CL IV) (36 IN)	LF	67		
58	TxDOT 465 6002	MANH (COMPL)(PRM)(48IN)	EA	1		
59	TxDOT 465 6006	JCTBOX(COMPL)(PJB)(4FTX4FT)	EA	2		
60	TxDOT 465 6009	JCTBOX(COMPL)(PJB)(5FTX5FT)	EA	5		
61	TxDOT 465 6011	JCTBOX(COMPL)(PJB)(6FTX6FT)	EA	1		
62	TxDOT 465 6012	JCTBOX(COMPL)(PJB)(7FTX7FT)	EA	9		
63	TxDOT 465 6175	INLET (COMPL)(TY C)(5-FT)	EA	2		
64	TxDOT 465 6175	INLET (COMPL)(TY C)(10-FT)	EA	20		
65	TxDOT 466 6152	WINGWALL (FW-0) (HW=5)	EA	1		
66	TxDOT 467 6362	SAFETY END TREATMENT (TY II)(18-IN)(RCP)(6:1)(C)	EA	14		
67	TxDOT 467 6379	SAFETY END TREATMENT (TY II)(24-IN)(RCP)(6:1)(C)	EA	4		
68	TxDOT 476 6023	JACK BOR OR TUN PIPE (30 IN) (STL CASING)	LF	48		
69	TxDOT 481 6016	PIPE (PVC) (SCH 40) (12 IN)	LF	94		
70	TxDOT 496 6006	REMOV STR (HEADWALL)	EA	3		
71	TxDOT 496 6007	REMOV STR (PIPE)	LF	60		
72	TxDOT 500 2001	WARRANTY BOND (5%)	LS	1		
73	TxDOT 500 6001	MOBILIZATION	LS	1		
74	TxDOT 502 6001	BARRICADES, SIGNS AND TRAFFIC HANDLING	MO	16		
75		TEMPORARY ACCESSIBLE PEDESTRIAN ROUTE	LF	150		
76		TEMPORARY ACCESSIBLE PARKING SPACES	EA	2		
77	TxDOT 506 6001	ROCK FILTER DAMS (INSTALL) (TY 1)	LF	732		
78	TxDOT 506 6011	ROCK FILTER DAMS (INSTALL) (REMOVE)	LF	732		
79	TxDOT 506 6038	TEMP SEDMT CONT FENCE (INSTALL)	LF	6,254		
80	TxDOT 506 6038	TEMP SEDMT CONT FENCE (INLET PROTECTION)	LF	682		
81	TxDOT 506 6039	TEMP SEDMT CONT FENCE (REMOVE)	LF	6,936		
82	TxDOT 512 6009	PORT CTB (FUR & INST)(LOW PROF)(TY 1)	LF	20		
83	TxDOT 512 6010	PORT CTB (FUR & INST)(LOW PROF)(TY 2)	LF	160		
84	TxDOT 512 6057	PORT CTB (REMOVE)(LOW PROF)(TY 1)	LF	20		
85	TxDOT 512 6058	PORT CTB (REMOVE)(LOW PROF)(TY 2)	LF	160		

City of Kyle - N. Burleson Street Improvements

Basis of Bid

BASE BID

Item No.	Spec Item	Description	Unit	Estimated Quantity	Unit Price	Extended Amount
86	TxDOT 528 6004	LANDSCAPE PAVERS	SY	64		
87	TxDOT 529 6008	CONC CURB & GUTTER (TY II)	LF	10,410		
88	TxDOT 529 6021	CONC CURB & GUTTER (SAWTOOTH)	LF	208		
89	TxDOT 530 6004	DRIVEWAYS (CONC)	SY	1,074		
90	TxDOT 531 6003	CONC SIDEWALKS (6")	SY	2,645		
91	TxDOT 531 6003	CONC SIDEWALKS (RAISED SIDEWALK)	SY	16		
92	TxDOT 531 6004	CURB RAMPS (TY 1)	EA	10		
93	TxDOT 531 6010	CURB RAMPS (TY 7)	EA	31		
94	TxDOT 531 6013	CURB RAMPS (TY 10)	EA	4		
95	TxDOT 531 6055	CONC SIDEWALKS (8") (MAILBOX PADS)	SY	6		
96	TxDOT 560 6001	MAILBOX INSTALL-S (TWG-POST) TY 1	EA	1		
97	TxDOT 560 6001	MAILBOX INSTALL-S (SPECIAL - BRICK)	EA	1		
98	TxDOT 644 6001	IN SM RD SN SUP&AM TY10BWG (1) SA (P)	EA	32		
99	TxDOT 644 6004	IN SM RD SN SUP&AM TY10BWG (1) SA (T)	EA	2		
100	TxDOT 666 6011	REFL PAV MRK TY I (W) 4" (SLD) (090MIL)	LF	2,238		
101	TxDOT 666 6035	REFL PAV MRK TY I (W) 8" (SLD) (090MIL)	LF	166		
102	TxDOT 666 6047	REFL PAV MRK TY I (W) 24" (SLD) (090MIL)	LF	331		
103	TxDOT 666 6053	REFL PAV MRK TY I (W) (ARROW) (090MIL)	EA	4		
104	TxDOT 666 6092	REFL PAV MRK TY I (RR XING) (090MIL)	EA	2		
105	TxDOT 666 6111	REFL PAV MRK TY I (W) (BIKE SYML) (090MIL)	EA	1		
106	TxDOT 666 6125	REFL PAV MRK TY I (Y) 4" (BRK) (090MIL)	LF	1,721		
107	TxDOT 666 6128	REFL PAV MRK TY I (Y) 4" (SLD) (090MIL)	LF	11,064		
108	TxDOT 666 6137	REFL PAV MRK TY I (Y) 8" (SLD) (090MIL)	LF	82		
109	TxDOT 666 6140	REFL PAV MRK TY I (Y) 12" (SLD) (090MIL)	LF	100		
110	TxDOT 666 6166	RE PM TY I (ACC PRK) (WHT) (SYMBOL ONLY)	EA	3		
111	TxDOT 666 6170	REF PAV MRK TY II (W) 4" (SLD)	LF	865		
112	TxDOT 666 6178	REF PAV MRK TY II (W) 8" (SLD)	LF	100		
113	TxDOT 666 6182	REF PAV MRK TY II (W) 24" (SLD)	LF	331		
114	TxDOT 666 6184	REF PAV MRK TY II (W) (ARROW)	EA	4		
115	TxDOT 666 6196	REF PAV MRK TY II (W) (RR XING)	EA	2		
116	TxDOT 666 6205	REF PAV MRK TY II (Y) 4" (BRK)	LF	1,721		
117	TxDOT 666 6207	REF PAV MRK TY II (Y) 4" (SLD)	LF	11,064		
118	TxDOT 666 6211	REF PAV MRK TY II (Y) 8" (SLD)	LF	82		
119	TxDOT 666 6212	REF PAV MRK TY II (Y) 12" (SLD)	LF	100		
120	TxDOT 666 6220	RE PM TY II (ACC PRK) (BL&WH) (W/BORDR)LG	EA	3		
121	TxDOT 672 6007	REFL PAV MRKR TY I-C	EA	12		
122	TxDOT 672 6009	REFL PAV MRKR TY II-A-A	EA	363		
123	TxDOT 6001 6001	PORTABLE CHANGEABLE MESSAGE SIGN	DAY	500		
124	TxDOT 6120 6001	DEAD END ROADWAY BARRICADE	LF	40		
125	TxDOT 7156 6001	CASING PIPE (BORE) (30" STEEL)	LF	48		
126	SS 6789	GEOGRID REINFORCEMENT (MSAL)	SY	25,325		
127	26 56 00	TYPE "S1" POLE/FIXTURE	EA	62		
128	TxDOT 610 6032	TYPE "S2" POLE/FIXTURE (MATCH EXISTING)	EA	1		

City of Kyle - N. Bureson Street Improvements

Basis of Bid

BASE BID

Item No.	Spec Item	Description	Unit	Estimated Quantity	Unit Price	Extended Amount
129	TxDOT 416 6029	DRILL SHAFT (RDWY ILL POLE) (30 IN)	LF	380		
130	26 56 00	2" CONDUIT, TRENCH & BACKFILL	LF	6,429		
131	26 56 00	ELECTRIC SERVICE & METER	EA	1		
132	26 05 19	#6 XHHW	LF	12,438		
133	26 05 19	#8 GRD XHHW	LF	6,219		
134	26 05 33	PULLBOX, CONCRETE W/ HINGED COVER	EA	8		
135	26 05 26	SPLICING AND TERMINATING NEW AND EXISTING CIRCUITS	EA	1		
136	26 56 00	120/240V SERVICE POLE DEMO WORK	EA	1		
137	COA 402S-A	FLOWABLE FILL ENCASEMENT	LF	72		
138	COA 437S-B	TREE GRATE AND FRAME	EA	4		
139	COA 505S-A	CONCRETE ENCASEMENT	LF	343		
140	COA 505S-B	16" STEEL CASING BY OPEN CUT	LF	28		
141	COA 501S	16" STEEL CASING BY BORE	LF	80		
142	COA 501S	24" STEEL CASING BY BORE	LF	288		
143	COA 506S MWW	MANHOLE (4' DIAMETER)	EA	14		
144	COA 506S DWW	DROP MANHOLE (4' DIAMETER)	EA	7		
145	COA 506S EDM	EXTRA DEPTH FOR MANHOLE (4' DIAMETER)	VF	44		
146	COA 506S AB	ABANDON EXISTING MANHOLE	EA	5		
147	COA 506	REMOVE EXISTING MANHOLE	EA	5		
148	COA 506	CONNECTION TO EXISTING MANHOLE	EA	1		
149	COA 506	STRUCTURAL LINING OF MANHOLE	VF	8		
150	COA 508S-5S	INLET, STANDARD (5 FT)	EA	8		
151	COA 508S-10S	INLET, STANDARD (10 FT)	EA	7		
152	COA 508S-20S	INLET, STANDARD (20 FT)	EA	3		
153	COA 508S-A	AREA INLET, STANDARD 4 FT X 4 FT	EA	1		
154	COA 509S-1	TRENCH SAFETY	LF	11,464		
155	COA 510-AWW	6" PVC WASTEWATER LINE (SDR-26)	LF	214		
156	COA 510-AWW	8" PVC WASTEWATER LINE (SDR-26)	LF	3,268		
157	COA 510-AWW	8" PVC PRESSURE RATED WASTEWATER LINE (DR-25)	LF	457		
158	COA 510-AWW	12" PVC WASTEWATER LINE (SDR-26)	LF	139		
159	COA 510-AWW	12" PVC PRESSURE RATED WASTEWATER LINE (DR-25)	LF	339		
160	COA 510	NEW SERVICE & CLEANOUT	EA	8		
161	COA 510	CUT/PLUG EXISTING WASTEWATER LINE	EA	6		
162	COA 511	CONNECT TO EXISTING WASTEWATER LINE	EA	9		
163	COA 510-AWRJ	2" PVC WATERLINE (SCH. 80) & FITTINGS	LF	83		
164	COA 510-AWRJ	4" PVC WATERLINE (AWWA C-900, DR-14) & FITTINGS	LF	45		
165	COA 510-AWRJ	6" PVC WATERLINE (AWWA C-900, DR-14) & FITTINGS	LF	285		
166	COA 510-AWRJ	6" DI WATER LINE (AWWA C-100, MIN CLASS 150) & FITTINGS	LF	216		
167	COA 510-AWRJ	8" PVC WATERLINE (AWWA C-900, DR-14) & FITTINGS	LF	1,273		
168	COA 510-AWRJ	12" PVC WATERLINE (AWWA C-900, DR-14) & FITTINGS	LF	5,371		
169	COA 510-AWRJ	12" DI WATER LINE (AWWA C-100, MIN CLASS 150) & FITTINGS	LF	142		
170	COA 510	CUT/PLUG EXISTING WATER LINE	EA	28		
171	COA 510-IR	RELOCATE EXISTING SERVICE LINE	EA	15		

City of Kyle - N. Burleson Street Improvements

Basis of Bid

BASE BID

Item No.	Spec Item	Description	Unit	Estimated Quantity	Unit Price	Extended Amount
172	COA 511S-A	6" GATE VALVE	EA	5		
173	COA 511S-A	8" GATE VALVE	EA	27		
174	COA 511S-A	12" GATE VALVE	EA	34		
175	COA 511S-B	FIRE HYDRANT ASSEMBLY WITH 6" GATE VALVE	EA	15		
176	COA 511S-F	1" COMBINATION AIR VALVE	EA	2		
177	COA 551	PIPE UNDERDRAIN, 6" DIA, PERF PVC	LF	185		
178	COA 620S	FILTER FABRIC	SY	20		
179	COA 660S	BIOFILTRATION MEDIUM	CY	170		
180	SP 551S-A	RAIN GARDEN DRAINAGE STONE	SY	230		
181	SP 551S-A	DRAINAGE STONE (6" DEPTH) (TREE WELLS)	SY	7		
182	SP 551S-B	RAIN GARDEN OVERFLOW STRUCTURE	EA	4		
183	SP 591S	SPLASH PAD ROCK, 3-5 IN DIA	SY	11		
184	SS 02263	PERMANENT TURF REINFORCEMENT MATTING	SY	1,150		
185	SS 02267	HDPE GEOMEMBRANE	SY	93		
186		3'x3'x3' LIMESTONE BOULDERS	EA	3		
187	32 84 23	IRRIGATION SYSTEM	LS	1		
188		12-TENANT DECORATIVE COMMUNITY MAILBOX	EA	3		
189		ALLOWANCE FOR FLAGGING FOR CONSTRUCTION WITHIN RAILROAD ROW	LS	1	\$ 60,000.00	\$ 60,000.00
TOTAL BASE BID AMOUNT						

00 42 23.01 "Bid Form Exhibit A"
City of Kyle - N. Burleson Street Improvements
Basis of Bid

BID ALTERNATE "1"

Item No.	Spec Item	Description	Unit	Estimated Quantity	Unit Price	Extended Amount
1	TxDOT 100 6002	PREPARING ROW	STA	9		
2	TxDOT 110 6002	EXCAVATION (CHANNEL)	CY	84		
3	TxDOT 132 6005	EMBANKMENT (FINAL) (ORD COMP) (TY C)	CY	4,316		
4	TxDOT 160 6003	FURNISHING AND PLACING TOPSOIL (4")	SY	2,038		
5	TxDOT 164 6027	CELL FBR MLCH SEED (PERM) (URBAN) (CLAY)	SY	2,038		
6	TxDOT 166 6002	FERTILIZER	TON	0.42		
7	TxDOT 168 6001	VEGETATIVE WATERING	MG	12		
8	TxDOT 341 6008	D-GR HMA TY-B PG64-22 (8")	TON	1,990		
9	TxDOT 341 6030	D-GR HMA TY-C SAC-B PG76-22 (3")	TON	606		
10	TxDOT 400 6002	STRUCTURAL EXCAVATION	CY	1,224		
11	TxDOT 462 6003	CONC BOX CULV (4 FT X 2 FT)	LF	507		
12	TxDOT 464 6003	RC PIPE (CL III) (18 IN)	LF	375		
13	TxDOT 464 6017	RC PIPE (CL IV) (18 IN)	LF	43		
14	TxDOT 465 6003	MANH (COMPL)(PRM)(60IN)	EA	1		
15	TxDOT 465 6006	JCTBOX(COMPL)(PJB)(4FTX4FT)	EA	1		
16	TxDOT 465 6011	JCTBOX(COMPL)(PJB)(6FTX6FT)	EA	1		
17	TxDOT 466 6179	WINGWALL (PW-1)(HW=4 FT)	EA	1		
18	TxDOT 466 6151	WINGWALL (FW-0)(HW=4 FT)	EA	2		
19	TxDOT 500 2001	WARRANTY BOND (5%)	LS	1		
20	TxDOT 500 6001	MOBILIZATION	LS	1		
21	TxDOT 502 6001	BARRICADES, SIGNS AND TRAFFIC HANDLING	MO	2		
22	TxDOT 506 6001	ROCK FILTER DAMS (INSTALL) (TY 1)	LF	25		
23	TxDOT 506 6011	ROCK FILTER DAMS (INSTALL) (REMOVE)	LF	25		
24	TxDOT 506 6038	TEMP SEDMT CONT FENCE (INSTALL)	LF	751		
25	TxDOT 506 6038	TEMP SEDMT CONT FENCE (INLET PROTECTION)	LF	30		
26	TxDOT 506 6039	TEMP SEDMT CONT FENCE (REMOVE)	LF	781		
27	TxDOT 529 6008	CONC CURB & GUTTER (TY II)	LF	1,822		
28	TxDOT 531 6003	CONC SIDEWALKS (6")	SY	747		
29	TxDOT 531 6004	CURB RAMPS (TY 1)	EA	2		
30	TxDOT 531 6010	CURB RAMPS (TY 7)	EA	2		
31	TxDOT 550 6020	CHAIN LINK FENCE (INSTALL) (4')	LF	120		
32	TxDOT 644 6001	IN SM RD SN SUP&AM TY10BWG (1) SA (P)	EA	7		
33	TxDOT 644 6004	IN SM RD SN SUP&AM TY10BWG (1) SA (T)	EA	3		
34	TxDOT 666 6125	REFL PAV MRK TY I (Y) 4" (BRK) (090MIL)	LF	364		
35	TxDOT 666 6128	REFL PAV MRK TY I (Y) 4" (SLD) (090MIL)	LF	1,635		
36	TxDOT 666 6205	REF PAV MRK TY II (Y) 4" (BRK)	LF	364		
37	TxDOT 666 6207	REF PAV MRK TY II (Y) 4" (SLD)	LF	1,635		
38	TxDOT 672 6009	REFL PAV MRKR TY II-A-A	EA	36		
39	COA 505S-B	24" STEEL CASING BY OPEN CUT	LF	70		
40	COA 508S-10S	INLET, STANDARD (10 FT)	EA	3		
TOTAL BID ALTERNATE "1" AMOUNT						

00 42 23.01 "Bid Form Exhibit A"
City of Kyle - N. Burseson Street Improvements
Basis of Bid

BID ALTERNATE "2"

Item No.	Spec Item	Description	Unit	Estimated Quantity	Unit Price	Extended Amount
1	TxDOT 100 6002	PREPARING ROW	STA	9		
2	TxDOT 110 6002	EXCAVATION (CHANNEL)	CY	84		
3	TxDOT 132 6005	EMBANKMENT (FINAL) (ORD COMP) (TY C)	CY	4,316		
4	TxDOT 160 6003	FURNISHING AND PLACING TOPSOIL (4")	SY	2,038		
5	TxDOT 164 6027	CELL FBR MLCH SEED (PERM) (URBAN) (CLAY)	SY	2,038		
6	TxDOT 166 6002	FERTILIZER	TON	0.42		
7	TxDOT 168 6001	VEGETATIVE WATERING	MG	12		
8	TxDOT 247 6366	FL BS (CMP IN PLC) (TY A GR 5) (FNAL POS) (16")	CY	1,923		
9	TxDOT 310 6005	PRIME COAT (AE-P)(0.20 GAL/SY)	GAL	866		
10	TxDOT 341 6028	D-GR HMA TY-C PG70-22 (5.5")	TON	1,111		
11	TxDOT 400 6002	STRUCTURAL EXCAVATION	CY	1,224		
12	TxDOT 462 6003	CONC BOX CULV (4 FT X 2 FT)	LF	507		
13	TxDOT 464 6003	RC PIPE (CL III) (18 IN)	LF	375		
14	TxDOT 464 6017	RC PIPE (CL IV) (18 IN)	LF	43		
15	TxDOT 465 6003	MANH (COMPL)(PRM)(60IN)	EA	1		
16	TxDOT 465 6006	JCTBOX(COMPL)(PJB)(4FTX4FT)	EA	1		
17	TxDOT 465 6011	JCTBOX(COMPL)(PJB)(6FTX6FT)	EA	1		
18	TxDOT 466 6179	WINGWALL (PW-1)(HW=4 FT)	EA	1		
19	TxDOT 466 6151	WINGWALL (FW-0)(HW=4 FT)	EA	2		
20	TxDOT 500 2001	WARRANTY BOND (5%)	LS	1		
21	TxDOT 500 6001	MOBILIZATION	LS	1		
22	TxDOT 502 6001	BARRICADES, SIGNS AND TRAFFIC HANDLING	MO	2		
23	TxDOT 506 6001	ROCK FILTER DAMS (INSTALL) (TY 1)	LF	25		
24	TxDOT 506 6011	ROCK FILTER DAMS (INSTALL) (REMOVE)	LF	25		
25	TxDOT 506 6038	TEMP SEDMT CONT FENCE (INSTALL)	LF	751		
26	TxDOT 506 6038	TEMP SEDMT CONT FENCE (INLET PROTECTION)	LF	30		
27	TxDOT 506 6039	TEMP SEDMT CONT FENCE (REMOVE)	LF	781		
28	TxDOT 529 6008	CONC CURB & GUTTER (TY II)	LF	1,822		
29	TxDOT 531 6003	CONC SIDEWALKS (6")	SY	747		
30	TxDOT 531 6004	CURB RAMPS (TY 1)	EA	2		
31	TxDOT 531 6010	CURB RAMPS (TY 7)	EA	2		
32	TxDOT 550 6020	CHAIN LINK FENCE (INSTALL) (4')	LF	120		
33	TxDOT 644 6001	IN SM RD SN SUP&AM TY10BWG (1) SA (P)	EA	7		
34	TxDOT 644 6004	IN SM RD SN SUP&AM TY10BWG (1) SA (T)	EA	3		
35	TxDOT 666 6125	REFL PAV MRK TY I (Y) 4" (BRK) (090MIL)	LF	364		
36	TxDOT 666 6128	REFL PAV MRK TY I (Y) 4" (SLD) (090MIL)	LF	1,635		
37	TxDOT 666 6205	REF PAV MRK TY II (Y) 4" (BRK)	LF	364		
38	TxDOT 666 6207	REF PAV MRK TY II (Y) 4" (SLD)	LF	1,635		
39	TxDOT 672 6009	REFL PAV MRKR TY II-A-A	EA	36		
40	COA 505S-B	24" STEEL CASING BY OPEN CUT	LF	70		
41	COA 508S-10S	INLET, STANDARD (10 FT)	EA	3		
TOTAL BID ALTERNATE "2" AMOUNT						

AGREEMENT BETWEEN OWNER AND CONTRACTOR FOR CONSTRUCTION CONTRACT

THIS AGREEMENT is by and between _____ City of Kyle, Texas _____ (“Owner”) and

_____ (“Contractor”).

Owner and Contractor, in consideration of the mutual covenants hereinafter set forth, agree as follows:

ARTICLE 1 – WORK

1.01 Contractor shall complete all Work as specified or indicated in the Contract Documents. The Work is generally described as follows:

Reconstruction of N. Burleson Street as a 38-foot wide roadway, a new 38-foot wide roadway connecting N. Burleson Street to the IH 35 Southbound Frontage Road, storm drain, detention pond improvements, waterline replacement, sanitary sewer replacement and extension, illumination, grading, pavement improvements, curb and gutter, pedestrian improvements and signing and marking for approximately 7,500 linear feet of roadway and all Extra Work in connection therewith, under the terms as stated in the “Standard General Conditions of the Construction Contract.” At its own proper cost and expense to furnish all the materials, supplies, machinery, equipment, tools, superintendents,, labor, insurance and other accessories and services necessary to complete the said construction, in accordance with the conditions and prices stated in the “Bid Form” attached hereto, and in accordance with the plans, which includes all maps, plats, blue prints and other drawings and printed explanatory matter thereof, and the specifications thereof (“Plans and Specifications”), as prepared by:

**Freese and Nichols, Inc.
10431 Morado Circle
Building 5, Suite 300
Austin, Texas 78759**

Herein titled the Engineer, each of which has been identified by the endorsement of the Contractor and the Engineer, thereon, together with the Contractor’s written proposal, the Supplementary Conditions, the Standard General Conditions of the Construction Contracts, the Performance and Payment Bonds hereto attached, and the technical specifications, all of which are made a part hereof and collectively evidence and constitute the entire contract.

1.02 The Project for which the Work under the Contract Documents may be the whole or only a part is generally described as follows:

N. Burleson Street Improvements

ARTICLE 2 – ENGINEER

2.01 The Project has been designed by Freese and Nichols, Inc. (Engineer).

ARTICLE 3 – CONTRACT TIMES

3.01 *Time of the Essence*

A. All time limits for Milestones, if any, Substantial Completion, and completion and readiness for final payment as stated in the Contract Documents are of the essence of the Contract. The Contractor hereby agrees to commence

the Work upon receipt of written Notice to Proceed from the Owner, and to complete the work with the time deadlines described in Paragraph 4.02 of this section.

4.02 *Days to Achieve Substantial Completion and Final Payment*

A. Base Bid

1. The Work will be substantially completed and placed in service in accordance with Paragraph 14.04 of the General Conditions within 504 calendar days after the date when the Contract Times commence to run.
2. The Work will be finally completed and ready for final payment in accordance with Paragraph 14.07 of the General Conditions within 564 calendar days after the date when the Contract Times commence to run.

B. Bid Alternate

1. The Work will be substantially completed and placed in service in accordance with Paragraph 14.04 of the General Conditions within 60 calendar days after the date when the Contract Times commence to run.
2. The Work will be finally completed and ready for final payment in accordance with Paragraph 14.07 of the General Conditions within 90 calendar days after the date when the Contract Times commence to run.

4.03 *Liquidated Damages*

- A. Contractor and Owner recognize that time is of the essence of this Agreement and that Owner will suffer financial loss if the Work is not completed within the times specified in Paragraph 4.02 above, plus any extensions thereof allowed in accordance with Article 12 of the General Conditions. The parties also recognize the delays, expense, and difficulties involved in proving in a legal or arbitration proceeding the actual loss suffered by Owner if the Work is not completed on time. Accordingly, instead of requiring any such proof, Owner and Contractor agree that as liquidated damages for delay (but not as a penalty), Contractor shall pay Owner \$1,000.00 for each day that expires after the time specified in Paragraph 4.02 for Substantial Completion until the Work is substantially complete. After Substantial Completion, if Contractor shall neglect, refuse, or fail to complete the remaining Work within the Contract Time or any proper extension thereof granted by Owner, Contractor shall pay Owner \$1,000.00 for each day that expires after the time specified in Paragraph 4.02 for completion and readiness for final payment until the Work is completed and ready for final payment.

ARTICLE 5 – CONTRACT PRICE

5.01 Owner shall pay Contractor for completion of the Work in accordance with the Contract Documents an amount in current funds equal to the sum of the amounts determined pursuant to Paragraphs 5.01.A, 5.01.B, and 5.01.C below:

- A. For all Work, at the prices stated in Contractor's Bid, attached hereto as an exhibit.

ARTICLE 6 – PAYMENT PROCEDURES

6.01 *Submittal and Processing of Payments*

- A. Contractor shall submit Applications for Payment in accordance with Article 14 of the General Conditions. Applications for Payment will be processed by Engineer/Owner as provided in the General Conditions.

6.02 *Progress Payments; Retainage*

- A. Owner shall make monthly progress payments on account of the Contract Price on the basis of Contractor's Applications for Payment submitted on or about 5 business days before the end of each month during performance of the Work as provided in Paragraphs 6.02.A.1 below. All such payments will be measured by the schedule of values established as provided in Paragraph 2.07.A of the General Conditions (and in the case of Unit Price Work

based on the number of units completed) or, in the event there is no schedule of values, as provided in the General Requirements:

1. Prior to Substantial Completion, progress payments will be made in an amount equal to the percentage indicated below but, in each case, less the aggregate of payments previously made and less such amounts as Engineer may determine or Owner may withhold, including but not limited to liquidated damages, in accordance with Paragraph 14.02 of the General Conditions:
 - a. 95 percent of Work completed (with the balance being retainage).

6.03 *Final Payment*

- A. Upon final completion and acceptance of the Work in accordance with Paragraph 14.07 of the General Conditions, Owner shall pay the remainder of the Contract Price as recommended by Engineer as provided in said Paragraph 14.07.

ARTICLE 7 – NOT USED

ARTICLE 8 – CONTRACTOR’S REPRESENTATIONS

8.01 In order to induce Owner to enter into this Agreement Contractor makes the following representations:

- A. Contractor has examined and carefully studied the Contract Documents and the other related data identified in the Bidding Documents.
- B. Contractor has visited the Site and become familiar with and is satisfied as to the general, local, and Site conditions that may affect cost, progress, and performance of the Work.
- C. Contractor is familiar with and is satisfied as to all federal, state, and local Laws and Regulations that may affect cost, progress, and performance of the Work.
- D. Contractor has carefully studied all: (1) reports of explorations and tests of subsurface conditions at or contiguous to the Site and all drawings of physical conditions in or relating to existing surface or subsurface structures at or contiguous to the Site (except Underground Facilities) which have been identified in the Supplementary Conditions as provided in Paragraph 4.02 of the General Conditions.
- E. Contractor has obtained and carefully studied (or assumes responsibility for doing so) all examinations, investigations, explorations, tests, studies, and data concerning conditions (surface, subsurface, and Underground Facilities) at or contiguous to the Site which may affect cost, progress, or performance of the Work or which relate to any aspect of the means, methods, techniques, sequences, and procedures of construction to be employed by Contractor, including any specific means, methods, techniques, sequences, and procedures of construction expressly required by the Bidding Documents, and safety precautions and programs incident thereto.
- F. Contractor does not consider that any further examinations, investigations, explorations, tests, studies, or data are necessary for the performance of the Work at the Contract Price, within the Contract Times, and in accordance with the other terms and conditions of the Contract Documents.
- G. Contractor is aware of the general nature of work to be performed by Owner and others at the Site that relates to the Work as indicated in the Contract Documents.
- H. Contractor has correlated the information known to Contractor, information and observations obtained from visits to the Site, reports and drawings identified in the Contract Documents, and all additional examinations, investigations, explorations, tests, studies, and data with the Contract Documents.

- I. Contractor has given Engineer written notice of all conflicts, errors, ambiguities, or discrepancies that Contractor has discovered in the Contract Documents, and the written resolution thereof by Engineer is acceptable to Contractor.
- J. The Contract Documents are generally sufficient to indicate and convey understanding of all terms and conditions for performance and furnishing of the Work.

ARTICLE 9 – CONTRACT DOCUMENTS

9.01 *Contents*

- A. The Contract Documents consist of the following:
 - 1. This Agreement
 - 2. Performance bond
 - 3. Payment bond
 - 4. Bid bond
 - 5. General Conditions
 - 6. Supplementary Conditions
 - 7. Specifications as listed in the table of contents of the Project Manual.
 - 8. Drawings consisting of 274 sheets with each sheet bearing the following general title: N. Burleson St. Improvements.
 - 9. Addenda
 - 10. Exhibits to this Agreement (enumerated as follows):
 - a. Contractor’s Bid
 - b. Documentation submitted by Contractor prior to Notice of Award
 - 11. The following which may be delivered or issued on or after the Effective Date of the Agreement and are not attached hereto:
 - a. Notice to Proceed
 - b. Work Change Directives
 - c. Change Order(s)
- B. The documents listed in Paragraph 9.01.A are attached to this Agreement (except as expressly noted otherwise above).
- C. There are no Contract Documents other than those listed above in this Article 9.
- D. The Contract Documents may only be amended, modified, or supplemented as provided in Paragraph 3.04 of the General Conditions.

ARTICLE 10 – MISCELLANEOUS

10.01 *Terms*

- A. Terms used in this Agreement will have the meanings stated in the General Conditions and the Supplementary Conditions.

10.02 *Assignment of Contract*

- A. No assignment by a party hereto of any rights under or interests in the Contract will be binding on another party hereto without the written consent of the party sought to be bound; and, specifically but without limitation, moneys that may become due and moneys that are due may not be assigned without such consent (except to the extent that the effect of this restriction may be limited by law), and unless specifically stated to the contrary in any written consent to an assignment, no assignment will release or discharge the assignor from any duty or responsibility under the Contract Documents.

10.03 *Successors and Assigns*

- A. Owner and Contractor each binds itself, its partners, successors, assigns, and legal representatives to the other party hereto, its partners, successors, assigns, and legal representatives in respect to all covenants, agreements, and obligations contained in the Contract Documents.

10.04 *Severability*

- A. Any provision or part of the Contract Documents held to be void or unenforceable under any Law or Regulation shall be deemed stricken, and all remaining provisions shall continue to be valid and binding upon Owner and Contractor, who agree that the Contract Documents shall be reformed to replace such stricken provision or part thereof with a valid and enforceable provision that comes as close as possible to expressing the intention of the stricken provision.

IN WITNESS WHEREOF, Owner and Contractor have signed this Agreement in duplicate. One counterpart each has been delivered to Owner and Contractor. All portions of the Contract Documents have been signed or identified by Owner and Contractor or on their behalf.

This Agreement will be effective on _____ (which is the Effective Date of the Agreement).

OWNER:

CONTRACTOR

City of Kyle, Texas _____

By: Travis Mitchell _____

By: _____

Title: Mayor _____

Title: _____

Attest: _____

Attest: _____

Title: _____

Title: _____

Address for giving notices:

Address for giving notices:

License No.: _____
(Where applicable)

Agent for service of process:

(If Contractor is a corporation or a partnership, attach evidence of authority to sign.)

01 23 10 ALTERNATES AND ALLOWANCES

1.00 GENERAL

1.01 REQUIREMENTS

A. Alternates:

1. This Section describes each alternate by number and describes the basic changes to be incorporated into the Work when this alternate is made a part of the Work in the Agreement.
2. Drawings and Specifications will outline the extent of Work to be included in the alternate Contract Price.
3. Coordinate related Work and modify surrounding Work as required to properly integrate the Work under each alternate, and provide a complete and functional system as required by the Contract Documents.
4. Alternates will be accepted or rejected at the option of the Owner.
5. Alternate prices will be maintained a minimum of 120 days, unless noted otherwise.

B. Allowances:

1. Include specified allowance amount in Contract Price.
2. The amount of each allowance includes:
 - a. The cost of the product to the Contractor less any applicable trade discounts.
 - b. Delivery to the Site.
 - c. Applicable taxes.
3. Include in the Contract Price all costs for:
 - a. Handling at the Site, including unloading, uncrating, and storage per Section 01 31 00 "Project Management and Coordination."
 - b. Cost for labor and equipment for installation and finishing.
 - c. Cost for related products not specifically listed in the allowance required for installation, including consumable supplies and materials.
 - d. All overhead, profit, and related costs.
4. Assist Owner in the selection of products.
 - a. Determine qualified Suppliers.
 - b. Obtain proposals from qualified Suppliers.
 - c. Present available alternates to the Owner through the Engineer. Notify Engineer of:
 - 1). Any objections to a particular Supplier or product.
 - 2). Effect on the Construction Schedule anticipated by the selection of each option.
 - 3). Cost of each option.

5. Upon selection of the product:
 - a. Purchase and install the product.
 - b. Contractor's responsibilities for products shall be the same as for products selected by the Contractor.
6. Submit a Contract Modification Request per Section 01 31 13 "Project Coordination" to adjust Contract Price if the net cost of the product is more or less than the specified amount.
 - a. For products specified as Unit Price Work, the unit cost shall apply to the quantities installed per the method of payment described in Section 01 29 00 "Payment Procedures."
 - b. Do not perform Work until selection of alternate has been approved in writing by the Owner.
 - c. Provide actual invoices for the materials.

1.02 SUBMITTALS

- A. Provide submittals for materials furnished as part of the alternate in accordance with Section 01 33 00 "Submittal Procedures."

1.03 DESCRIPTION OF ALTERNATES

- A. Add Alternate A:
 1. **Construction of Marketplace Avenue Extension, including pavement, sidewalk, and storm drain. Pavement section will be 3" HMAC Type D / 8" HMAC Type B.**
- B. Add Alternate B:
 1. **Construction of Marketplace Avenue Extension, including pavement, sidewalk, and storm drain. Pavement section will be 5.5" HMAC Type D / 16" Flexible Base.**

1.04 DESCRIPTION OF ALLOWANCES

- A. Flagging for Construction within Railroad ROW
 1. This allowance is for fees to be charged by Union Pacific Railroad to the Contractor for flagging services during construction within the railroad ROW and foul zone.

1.05 GUARANTEES

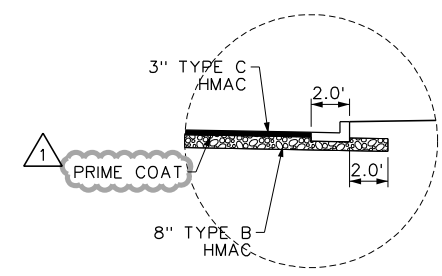
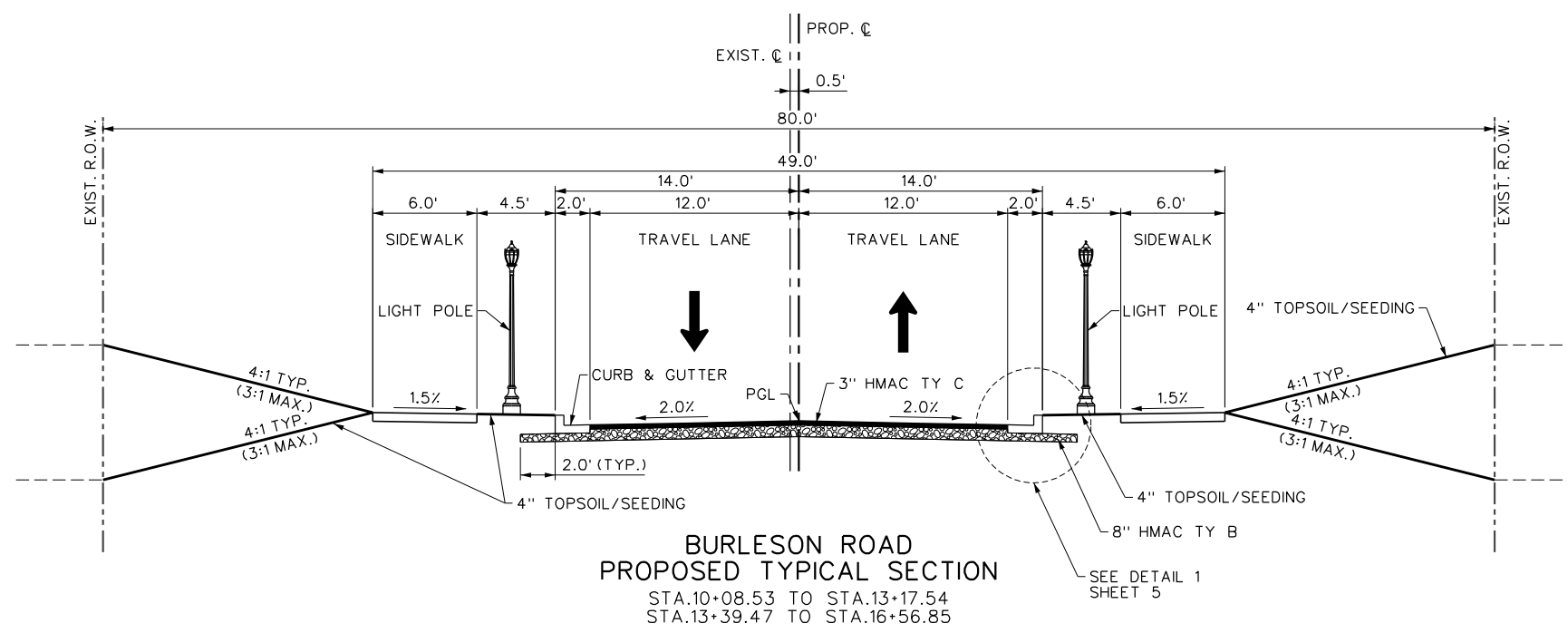
- A. Provide guarantees for products furnished under alternate bids / proposals or purchased by allowances as required by the Contract Documents.

2.00 PRODUCTS (NOT APPLICABLE)

3.00 EXECUTION (NOT APPLICABLE)

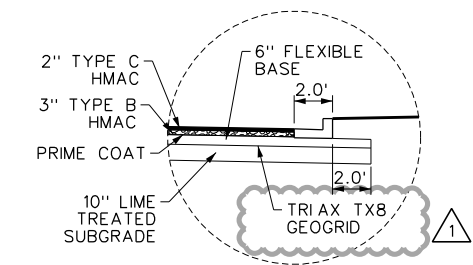
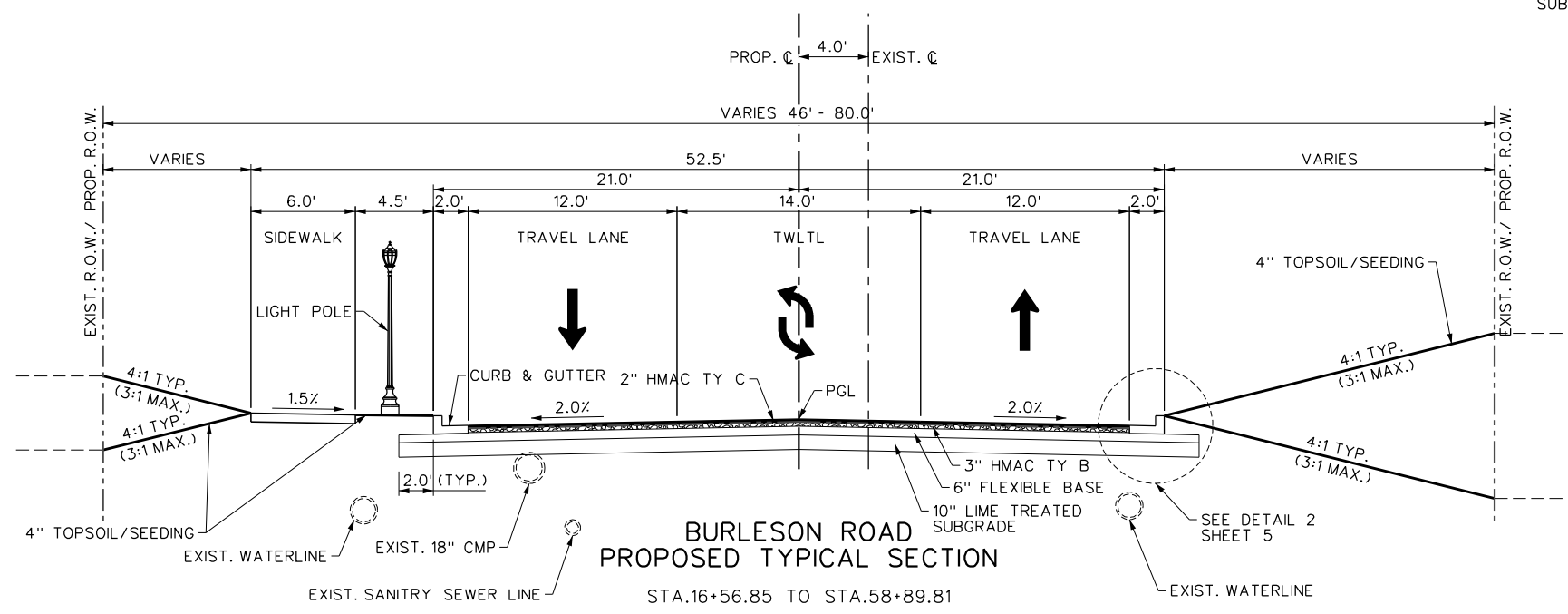
END OF SECTION

MicroStation V8 User: 025900\Office - Austin
 KYL14284 - N:\Drawings\CV-TRF-PL-PR TYPICAL SECTIONS01.sht
 Plot Scale: 20.0000 15.0000 15.0000
 Date: Jun 15, 2018 - 10:39:28 AM
 Project: Freese and Nichols, Inc.



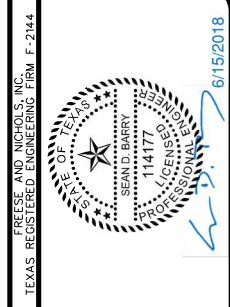
1 SECTION DETAILS
 NOT TO SCALE

- NOTE:
1. LIMITS OF SIDEWALK VARY. SEE ROAD PLAN SHEETS FOR MORE DETAILS.
 2. REFER TO TXDOT SPECIFICATIONS 100, 110, AND 132 FOR SUBGRADE PREPARATION REQUIREMENTS.
 3. PROOF ROLLING ITEM 216 IS SUBSIDIARY TO CONTRACT WORK ITEMS AND SHALL NOT BE PAID SEPARATELY.



2 SECTION DETAILS
 NOT TO SCALE

- NOTE:
1. LIMITS OF SIDEWALK VARY. SEE ROAD PLAN SHEETS FOR MORE DETAILS.
 2. REFER TO TXDOT SPECIFICATIONS 100, 110, AND 132 FOR SUBGRADE PREPARATION REQUIREMENTS.



FREES & NICHOLS
 10431 Morado Circle, Suite 300
 Austin, TX 78753
 Phone: (512) 677-3100
 Fax: (512) 677-3101
 Web: www.freese.com

CITY OF KYLE, TEXAS
N. BURLESON ST. IMPROVEMENTS
 CIVIL

PROPOSED TYPICAL SECTIONS

NO.	ISSUES	BY	DATE	FN JOB NO.	DATE	DESIGNED	SDR	DRAWN	REVISED	CHECKED	JNR	FILE NAME
0				KYL14284	5/29/18	SDB			6/15/18			TYPICAL SECTIONS01.sht
1												

ADDENDUM NO. 1
 VERIFY SCALE Bar is one inch on original drawing. If not one inch on this sheet, adjust @ 0.0125 PL-PR

SHEET **5**
 TOTAL 292

Project Number: KYL14284
City: Kyle
Highway: N. Burleson Street

Sheet: 10
County: Hays

Present to City, LCN's proposed to detour traffic, a minimum of *seven (7)* full calendar days preceding any proposed implementation date.

Present to City, LCN's proposed for night work, a minimum of *seven (7)* full calendar days preceding any proposed implementation date.

Receive concurrence prior to LCN implementation.

Meet with the Engineer prior to roadway and lane closures to ensure that sufficient equipment, materials, devices, and workers will be used. Discuss contingency plans at that time. Consider inclement weather prior to implementing the lane closures.

Submit a cancellation of any lane closures, no later than noon on the day preceding the proposed work.

Coordinate Main Lane closures with adjacent projects.

Obtain prior approval for any lane closures of the IH 35 south bound frontage road, which occur during peak hours. Maintain a minimum of 1 lane open at all times.

Take immediate action to modify Closures / Traffic Control, if at any time backup (roadway queuing) becomes unreasonable (greater than 20 minutes). Have in place, a contingency plan of how this will occur.

Utilize Shadow Vehicle with Truck Mounted Attenuator for setup and removal of each lane closure.

Incorporate and maintain a 3H: 1V safety wedge into the proposed construction for any roadway edge of 2 inches or greater adjacent to a roadway under traffic.

Within the limits of the project, provide standard barricades, warning signs, delineators, lights, 28-inch cones, and flaggers in enough numbers and combinations, as directed.

Use a minimum of 2 flaggers, 2 advance warning flashing arrow panels (TY C), 2 of each signs CW20-5TR or CW20-5TL with appropriate distance plaques and CW9-2TR or CW9-2TL and 28-in. cones at each location in which milling or paving operations are in progress. Maintain at least 1 lane of traffic in each direction during paving or milling operations. Maintain at least the minimum numbers of lanes as directed.

Contractor to provide two (2) portable changeable message boards to advise the public of all lane closures and traffic shifts prior to occurrence. All message board placement, verbiage, and duration must be coordinated with the City's representative prior to placement.

Use advance warning flashing arrow panels for the closing of traffic lanes. Furnish one stand-by unit, in good working condition at the jobsite, ready for immediate use.

General Notes

Sheet U

Project Number: KYL14284
City: Kyle
Highway: N. Burleson Street

Sheet: 10
County: Hays

Maintain access to all streets and driveways at all times, unless otherwise approved. Consider subsidiary to the pertinent Items.

Notify the United States Postal Service (USPS) prior to restricting access to existing mailboxes. USPS will provide mail pickup at Post Office during phase of construction that impacts mail delivery. During all other phases permanent or temporary mailboxes must be provided for all properties to receive mail. This will not be paid separately and should be considered subsidiary to the pertinent Items.

Trash collection must be maintained during construction. Coordinate with Texas Disposal Systems and the property owners to ensure trash is collected when access to properties is restricted. Contractor may have to haul trash from properties to a nearby location that is accessible by Texas Disposal Systems. This will not be paid separately and should be considered subsidiary to the pertinent Items.

Furnish advisory speed signs in enough numbers as directed.

Maintain enough workers to revise traffic control as directed.

Provide a "Downstream" Buffer Space (≈100' per lane with devices spaced at ≈20') for each lane closure setup, as directed.

Maintain construction-warning signs, which are needed for longer periods than what is shown on the traffic control plan or as directed. Consider subsidiary to the pertinent Items.

Cover or remove any existing sign(s), which conflict with temporary traffic control operations. Install all permanent signs, delineation, and object markers necessary for the operation of any roadway before opening that section of roadway to traffic, regardless of the phase during which the roadway construction occurs. Erect the signs on temporary mounts until the permanent mounts are installed. Consider any costs associated with the temporary mounts subsidiary. Repair or replace any signs, which are damaged by the Contractor's operations during construction or which are deemed not sufficient. The Engineer will be the sole judge of the adequacy of the sign(s). Consider this work subsidiary to the pertinent Items.

Secure a 28-inch cone on top of any foundations that have protruding studs during construction. The cones will meet the specifications listed on BC (10)-07. In addition, they will be reflectorized, as described. All labor and materials will be considered subsidiary to the pertinent Items.

Provide "Electronic" Portable Changeable Message Sign(s) (EPCMS) as part of the traffic control operations and provide another one that is available to utilize when a backup is needed. Consider the one designated for backup as subsidiary to the various Items of the project. All EPCMS will be exclusive to this project, unless otherwise approved. Placement location and message as directed.

Maintain Sandbags that are used for ballast, as directed. Consider subsidiary to the pertinent Items.

General Notes

Sheet V



FREES & NICHOLLS
 10431 Morado Circle, Suite 300
 Austin, TX 78757-6731
 Phone: (512) 677-3100
 Fax: (512) 677-3101
 Web: www.freese.com

CITY OF KYLE, TEXAS
N. BURLESON ST. IMPROVEMENTS
 CIVIL
GENERAL NOTES AND SPECIFICATIONS

NO.	ISSUES	BY	DATE	FAN JOB NO.	KYL14284
				DATE	5/29/18
				DESIGNED	SDB
				DRAWN	MJM
				REVISED	
				CHECKED	JNR
				FILE NAME	CV-ALL-GN-GENNOTE11.sht
				ADDENDUM NO. 1	
				VERIFY SCALE	Bar is one inch on original drawing. If not one inch on this sheet, adjust scale.
SHEET		10K			
TOTAL		292			

MicroStation V8 User: 02590\Office - Austin
 KYL14284 - N:\Drawings\CV-ALL-GN-GENNOTE11.sht
 Plot Scale: 20.0000 (0.71 in. Model) Default
 Date: Jun 14, 2018 - 04:20:30 PM
 Project: Freese and Nicholls, Inc.

Project Number: KYL14284
City: Kyle
Highway: N. Burleson Street

Sheet: 10
County: Hays

As work progresses, transition as necessary new pavement to existing for the safe passage of traffic.

ITEM 506 - TEMPORARY EROSION, SEDIMENTATION, AND ENVIRONMENTAL CONTROLS

Obtain the Engineer's approval for proposed methods used for erosion control before starting each phase of construction.

Stockpile 4-inch by 8-inch (4" x 8") rock for emergency erosion control use, as directed. Place this rock in ditches and other areas, as directed. The Contractor will be reimbursed in accordance with Pertinent Items or Article 9.5, "Force Account."

Place temporary sediment fence at locations where large roadside guide signs and new overhead sign structures are installed. In addition, place temporary sediment fence at those locations where existing large guide signs and structures are to be removed.

Double-bag all sandbags used for erosion control Items. Consider subsidiary to pertinent Items.

ITEMS 528, 531 and 536

Reinforcement will be in accordance with Item 432.3.1 unless shown on the plans. Fiber reinforcement is not allowed. Class A and B Concrete are allowed to use Coarse Aggregate Grades 1-8. Expansion joints will be placed every 40 ft. Expansion joints must be 1" wide asphalt board and flush with the surface. The bottom of the joint shall be at half the depth of the concrete. Sidewalk cross slope must not exceed 1.5%.

All sidewalks and ramps must conform to ADA and TAS standards. The maximum sidewalk longitudinal slope is 5%. The maximum cross slope is 2%. For curb ramps, the maximum longitudinal slope is 8.333%. For curb ramp landings, the maximum slope is 2% in all directions.

Unless shown on the plans or in the pay items, all concrete will be 5 in. thick and have 2 in. sand, base, or RAP bedding. Furnish base meeting the requirement for any type or grade in accordance with Item 247. Base compressive strengths are waived. RAP must be 100% passing a 1 in. sieve. Bedding must be placed using ordinary compaction.

If roots are encountered verify with the Engineer prior to accommodating or removing 2 in. diameter or larger roots. Root removal must be in accordance with Item 752.4.2. Roots may remain in the bedding or base. For improvements within 6 in. of a root, the concrete thickness may be reduced by 1 in. and the bedding increased by 1 in. to minimize impacts to the roots. Adjust bedding and surface profile to provide a 1 in. bedding cushion around the roots. The surface profile may be adjusted to the extent allowed by ADA. This work is subsidiary.

ITEM 530 – INTERSECTIONS, DRIVEWAYS, AND TURNOUTS

General Notes

Sheet W

Project Number: KYL14284
City: Kyle
Highway: N. Burleson Street

Sheet: 10
County: Hays

Coordinate and notify property owners a minimum of 48 hours in advance of beginning work on their driveways. Provide, City Engineer a list of each notification and contact prior to each closure.

Provide access, at all times, to adjacent property. Construct driveways one-half sections, to allow access.

Do not completely close driveways for reconstruction purposes, unless a reasonable alternate access exists to the property, as approved.

ITEM 560 - MAILBOX ASSEMBLIES

Decorative 12-tenant community mailboxes must be U.S. Mail Supply Traditional Decorative 12 Tenant Door Cluster Box Unit (black in color) or approved equal.
<https://www.usmailsupply.com/P/TraditionalDecorative12TenantDoorClusterBoxUnit/2376>

ITEM 644 - SMALL ROADSIDE SIGN SUPPORTS AND ASSEMBLIES

Fabricate all small signs not detailed on the plans in conformance with the latest edition of the "Standard Highway Sign Designs for Texas."
<http://www.txdot.gov/business/resources/highway.html>

Street name signs shall consist of white letters with a red and blue background and shall be retro-reflective. Standard street name signs will be composed of lower-case letters at least 4 inches in height with initial upper-case letters being at least 6 inches in height. Signs will be double sided.

The street name sign background colors will be "SafeLane Kyle Red" and SafeLane Kyle Blue" and the white lettering will be high intensity grade reflective sheeting. The wording font will be "Transport". All retro-reflective sheeting must conform to the Texas Department of Transportation material specification DMS-8300.

Street name signs that have supplemental lettering to indicate the type of street (such as Lane, Avenue, or Road) may be in smaller lettering at least 3 inches tall and may use standard abbreviations (such as Ln, Ave, or Rd.) as noted in city plans.

Street name sign blanks shall be 9" in height by variable length by .125" thick. All street name sign blanks must be anodized aluminum with radius corners. All street name sign blanks must conform to the Texas Department of Transportation material specification DMS-7110.

All street name signs shall be in conformance with the City of Kyle Standards and include the City of Kyle logo.

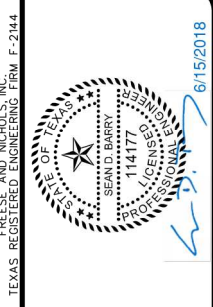
All street name signs will be finished with a clear anti-graffiti film.

Square tubing shall not be used for sign posts.

ITEM 662, 666, & 672

General Notes

Sheet X



FREES & NICHOLS
 10431 Morado Circle, Suite 300
 Austin, TX 78753
 Phone - (512) 617-3100
 Fax - (512) 617-3101
 Web - www.freese.com

CITY OF KYLE, TEXAS
N. BURLESON ST. IMPROVEMENTS
 CIVIL
GENERAL NOTES AND SPECIFICATIONS

NO.	ISSUES	BY	DATE	FEN JOB NO.	KYL14284
				DATE	5/29/18
				DESIGNED	SDB
				DRAWN	MMJ
				REVISED	
				CHECKED	JNR
				FILE NAME	QV-ALL-GN-GENNOTE12.sht
				ADDENDUM NO.	1
				DATE	6/15/18
				SCALE	As shown on original drawing. If not one inch on this sheet, adjust scale.
SHEET		10L			
TOTAL		292			

MicroStation V8 User: 02590\Office - Austin
 KYL14284 - N:\Drawings\CV-ALL-GN-GENNOTE12.sht
 Plot Scale: 20.0000 (0.1 in. = 1'-0")
 Date: Jun 15, 2018 - 10:39:29 AM
 Project: Freese and Nichols, Inc.

Project Number: KYL14284
City: Kyle
Highway: N. Burleson Street

Sheet: 10
County: Hays

Notify the Engineer at least 24 hours in advance of removing existing striping and placing pavement markings & markers.

Apply markings during good weather unless otherwise directed. If markings are placed at Contractor's option, when inclement weather is impending, and the markings are damaged by subsequent precipitation, the Contractor is responsible for all costs associated with replacing the markings if required.

ITEM 662 - WORK ZONE PAVEMENT MARKINGS

Place temporary pavement markings each night, as directed. Temporary flexible-reflective tabs will not be allowed as temporary pavement marking on the various roadways, unless otherwise approved.

If Temporary Flexible Reflective Tabs are allowed replace any missing tabs daily. If tabs are used, replace tabs at the Contractor's expense.

Remove work zone pavement markings within 48 hours after permanent striping has been completed.

Foil backed pavement markings will not be allowed.

ITEM 666 - REFLECTORIZED PAVEMENT MARKINGS

Apply Type I ReflectORIZED Pavement Markings no sooner than 14 days after applying the final course of HMACP, unless otherwise directed.

Reference existing channel islands, gores, and lane striping before commencing work. Provide referencing that will include a sketch of the layout to the Engineer. Obtain approval for placement of guide marks from the Engineer before installing any permanent pavement markings. Consider subsidiary to the pertinent Items.

If TY II material is used (vs. an acrylic or epoxy) as the sealer for the TY I markings, place the TY II a minimum of 14 calendar days (to provide adequate curing) before placing the TY I markings.

ITEM 672 - RAISED PAVEMENT MARKERS

Place the bituminous adhesive at a temperature range of 380°F to 390°F. Place the pavement marker on the bituminous adhesive approximately 20 seconds after the adhesive is placed on the pavement. Ensure the pavement marker rests solely on the adhesive and not the pavement surface. Ensure that a minimum of 1/8 in. layer of bituminous adhesive remains between the pavement marker and the pavement surface.

COA ITEMS: WATER AND WASTEWATER CONSTRUCTION NOTES

Pipe material for water mains shall be PVC (AWWA C-900). Water services (2" or less) shall be polyethylene tubing (200 psi, DR14).

General Notes

Sheet Y

Project Number: KYL14284
City: Kyle
Highway: N. Burleson Street

Sheet: 10
County: Hays

Pipe material for pressure wastewater mains shall be PVC (200 psi. SDR21). Pipe material for gravity wastewater mains shall be PVC (SDR 26). SDR-35 wastewater is not allowed in the right of way or public easement.

All wastewater main, excluding service lines, shall be mandrel tested per TCEQ (Texas Commission on Environmental Quality) criteria. A mandrel test will not be performed until backfill has been in place for a minimum 30 days.

Unless otherwise accepted by the City Engineer, depth of cover for all lines out of the pavement shall be 42" min. and depth of cover for all lines under pavement shall be a min. of 30" below subgrade. Prior to excavating for water line placement, the Contractor is responsible for submitting water line vertical profile for Inspector review. This work will be subsidiary to bid item.

Where a water or wastewater line crosses below a storm sewer structure and the top of the pipe is within 18" of the bottom of the utility structure, the pipe shall be encased with concrete for a distance of at least 1' on either side of the ditch line of the utility structure or the storm sewer. Concrete encasement will not be required for ductile iron pipe with sizes larger than 12". Concrete encasement shall conform to the City of Austin standard detail.

All manholes shall be concrete with cast iron ring and cover. All manholes located outside of the pavement shall be bolted covers. Tapping of fiberglass manholes shall not be allowed. All manholes shall be coated with 80 mil of Raven Lining System or approved equal.

All pipe bedding material shall conform to the City of Austin Standard Detail. Sand must be washed/manufactured san, not pit run.

All fire hydrant leads shall be ductile iron pipe (AWWA C-100, min. class 150). All iron pipe and fittings shall be wrapped with a minimum 11 8-mil polyethylene film prior to placing concrete.

The Contractor shall contact the City Inspector to coordinate utility tie-ins and notify him at least 48 hours prior to connection to existing lines.

The Contractor, at his expense, shall perform quality testing for all wastewater pipe installed and pressure pipe hydrostatic testing of all water lines constructed and shall provide equipment included pumps, gauges, supplies, and labor necessary to perform the tests.

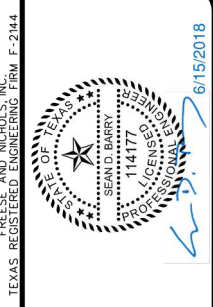
Quality and pressure testing shall be monitored by City of Kyle personnel. Water samples will be collected by the City of Kyle, after all fees are paid in accordance to City of Kyle's fee schedule, to verify each treated line has attained an initial chlorine concentration of 50 ppm.

The Contractor shall coordinate testing with the City of Kyle and provide no less than 24 hours' notice prior to performing sterilization, quality testing or pressure testing.

The Contractor shall not open or close any valves unless authorized by the City of Kyle.

General Notes

Sheet Z



FREESSE AND NICHOLS
 10431 Morado Circle, Suite 300
 Austin, TX 78753
 Phone - (512) 677-3100
 Fax - (512) 677-3101
 Web - www.freese.com

CITY OF KYLE, TEXAS
N. BURLESON ST. IMPROVEMENTS
 CIVIL
GENERAL NOTES AND SPECIFICATIONS

NO.	ISSUES	BY	DATE	FEN JOB NO.	KYL14284
				DATE	5/29/18
				DESIGNED	SDB
				DRAWN	MMJ
				REVISED	
				CHECKED	JNR
				FILE NAME	QV-ALL-GN-GENNOTE13.sht
				ADDENDUM NO. 1	SDB
				DATE	6/15/18
				SCALE	As shown on original
				VERIFY SCALE	Bar is one inch on original drawing. If not one inch on this sheet, adjust scale.

SHEET 10M
 TOTAL 292

MicroStation V8 User: 02590\Office - Austin
 KYL14284 - N:\Drawings\CV-ALL-GN-GENNOTE13.sht
 Plot Scale: 20.0000 (0.7087 in. = 1.0000 in.) Model: Default
 Date: Jun 15, 2018 - 10:39:38 AM Project: Freese and Nichols, Inc.

Project Number: KYL14284
City: Kyle
Highway: N. Burleson Street

Sheet: 10
County: Hays

All valve boxes and covers shall be cast iron.

A double check backflow device in a vault shall be installed adjacent the right of way or public easement on private property on all private fire lines.

All water service, wastewater service and valve locations shall be appropriately marked as follows:

Water service	"W" on top of curb
Wastewater service	"S" on top of curb
Valve	"V" on face of curb

The Contractor is hereby notified that connecting to, shutting down, or terminating existing utility lines may have to occur at off-peak hours. Such hours are usually outside normal working hours and possibly between 12 a.m. and 6 a.m.

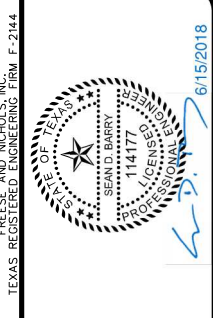
All fire hydrants shall be National Standard Hose Thread.

All material tests, including soil density tests and related soil analysis, shall be accomplished by an independent laboratory funded by the developer in accordance with the specifications.

1

General Notes

Sheet AA



FREESE AND NICHOLS
 10431 Morado Circle, Suite 300
 Austin, TX 78753
 Phone - (512) 617-3100
 Fax - (512) 617-3101
 Web - www.freese.com

CITY OF KYLE, TEXAS
N. BURLESON ST. IMPROVEMENTS
 CIVIL
GENERAL NOTES AND SPECIFICATIONS

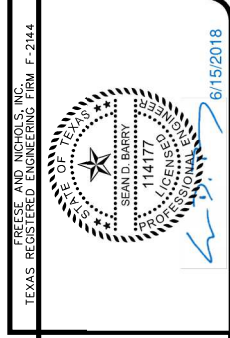
NO.	ISSUES	BY	DATE	FN	JOB NO.
				DESIGNED	KYL14284
				DRAWN	5/29/18
				REVISION	SDB
				CHECKED	MJM
				FILE NAME	6/15/18
				ADDENDUM NO. 1	QV-ALL-GN-GENNOTE14.sht
				VERIFY SCALE	JNR
				Bar is one inch on original	
				drawing. If not one inch on	
				this sheet, adjust scale.	

SHEET	10N
TOTAL	292

STORM WATER - BASE BID																	
ITEM NUMBER	DESCRIPTION	UNIT	SHEET NUMBERS														TOTAL
			150	151	152	153	154	155	156	157	158	159	160	161	174		
TxDOT 104 6015	REMOVING CONC (SIDEWALK)	SY														190	190
TxDOT 110 6003	EXCAVATION (POND)	CY								7						7406	7413
TxDOT 110 6002	EXCAVATION (CHANNEL)	CY													150	1048	1198
TxDOT 132 6005	EMBANKMENT (RAIN GARDEN)	CY		17	27	37	17								10	50	98
TxDOT 132 6005	EMBANKMENT (POND)	CY													70	8710	8780
TxDOT 160 6003	FURNISHING AND PLACING TOPSOIL (4")	SY													70	8710	8780
TxDOT 162 6002	BLOCK SODDING	SY													70	8710	8780
TxDOT 402 6001	TRENCH EXCAVATION PROTECTION	LF	462	488	414	339	448	436	573	430	475	748	442				5255
TxDOT 420 6007	CONCRETE (DROP STRUCTURE)	CY							37								37
TxDOT 420 6007	CONCRETE (APRON W Baffle BLOCS)	CY							62								62
TxDOT 420 6007	CONCRETE (PILOT CHANNEL)	CY														42	42
TxDOT 420 6007	CONCRETE (RAIN GARDEN)	CY		12	15	22	8										57
TxDOT 420 6007	CONCRETE (POND HEADWALLS AND APRONS)	CY														41	41
TxDOT 422 6001	REIN CONC SLAB	SF													252		252
TxDOT 432 6002	RIPRAP (CONC) (5 IN)	CY		95	28	25											148
TxDOT SP432	RIP RAP (MITERED SLOPE)	CY														13	13
TxDOT 462 6004	CONC BOX CULV (4 FT X 3 FT)	LF							336	400	399	469	233				1837
TxDOT 462 6012	CONC BOX CULV (6 FT X 5 FT)	LF							54								54
TxDOT 462 6021	CONC BOX CULV (8 FT X 6 FT)	LF							106								106
TxDOT 464 6001	RC PIPE (CL III) (12 IN)	LF				33											33
TxDOT 464 6003	RC PIPE (CL III) (18 IN)	LF	462				56	36	33	30	76	50	102		48		893
TxDOT 464 6005	RC PIPE (CL III) (24 IN)	LF					211	304				80	56				651
TxDOT 464 6008	RC PIPE (CL III) (36 IN)	LF						96	44								140
TxDOT 464 6017	RC PIPE (CL IV) (18 IN)	LF		488	414	236	118					82	51				1389
TxDOT 464 6018	RC PIPE (CL IV) (24 IN)	LF				70	63										133
TxDOT 464 6020	RC PIPE (CL IV) (36 IN)	LF									67						67
TxDOT 465 6002	MANH (COMPL)(PRM)(48IN)	EA						1									1
TxDOT 465 6006	JCTBOX(COMPL)(PJB)(4FTX4FT)	EA				1	1										2
TxDOT 465 6009	JCTBOX(COMPL)(PJB)(5FTX5FT)	EA		1			1	1				1	1				5
TxDOT 465 6011	JCTBOX(COMPL)(PJB)(6FTX6FT)	EA										1					1
TxDOT 465 6012	JCTBOX(COMPL)(PJB)(7FTX7FT)	EA							1	1	2	3	2				9
TxDOT 465 6175	INLET (COMPL)(TY C)(5-FT)	EA		2													2
TxDOT 465 6175	INLET (COMPL)(TY C)(10-FT)	EA					3	2	2	2	5	4	2				20
TxDOT 466 6152	WINGWALL (FW-0) (HW=5)	EA							1								1
TxDOT 467 6362	SAFETY END TREATMENT (TY II)(18-IN)(RCP)(6:1)(C)	EA		6	8												14
TxDOT 467 6379	SAFETY END TREATMENT (TY II)(24-IN)(RCP)(6:1)(C)	EA				2	2										4
TxDOT 476 6023	JACK BOR OR TUN PIPE(30 IN)(RC)(CL III)	LF													48		48
TxDOT 481 6026	PIPE (PVC) (SCH 80) (12 IN)	LF		17	29	27	21										94
TxDOT 496 6006	REMOVING CONC (HEADWALL)	EA	1												2		3
TxDOT 496 6007	REMOVING CONC (RC PIPE)	LF		134	164	171	338		125		60	197			60		1249
TxDOT 7156 6001	CASING PIPE (BORE) (30" STEEL)	LF													48		48
COA 4025	CONTROLLED LOW STRENGTH MAERIAL (CLSM)	CY													1		1
COA 508S-5S	INLET, STANDARD (5 FT)	EA	5		1	1	1										8
COA 508S-10S	INLET, STANDARD (10 FT)	EA			1	3						2	1				7
COA 508S-20S	INLET, STANDARD (20 FT)	EA										2	1				3
COA 508S-A	AREA INLET, STANDARD 4 FT X 4 FT	EA					1										1
COA 6205	FILTER FABRIC	SY													18		18
COA 551	PIPE UNDERDRAIN, 6" DIA, PERF PVC	LF		32	51	70	32										185
SP551S-A	RAIN GARDEN DRAINAGE STONE	SY		47	74	87	22										230
SP551S-B	RAIN GARDEN OVERFLOW STRUCTURE	EA		1	1	1	1										4
SP591S	SPLASH PAD ROCK, 3-5 IN DIA	SY		2	3	4	2										11
COA 6605	BIOFILTRATION MEDIUM	CY		36	49	62	21										168
SS02263	PERMANENT TURF REINFORCMENT MATTING	SY													1130		1130
SS02267	HDPE GEOMEMBRANE	SY		16	26	35	16										93

PAVEMENT MARKINGS - BASE BID														
ITEM NUMBER	DESCRIPTION	UNIT	SHEET NUMBERS											TOTAL
			205	206	207	208	209	210	211	212	213	215		
TxDOT 644 6001	IN SM RD SN SUP&AM TY10BWG (1) SA (P)	EA	4	7	6	6	4	2	6					35
TxDOT 644 6004	IN SM RD SN SUP&AM TY10BWG (1) SA (T)	EA					2			1			1	4
TxDOT 666 6011	REFL PAV MRK TY I (W) 4" (SLD) (090MIL)	LF	975					29					1234	2238
TxDOT 666 6035	REFL PAV MRK TY I (W) 8" (SLD) (090MIL)	LF	100				39	27					167	166
TxDOT 666 6047	REFL PAV MRK TY I (W) 24" (SLD) (090MIL)	LF	62				24	22	56				167	331
TxDOT 666 6053	REFL PAV MRK TY I (W) (ARROW) (090MIL)	EA					2	2						4
TxDOT 666 6092	REFL PAV MRK TY I (RR XING) (090MIL)	EA							2					2
TxDOT 666 6125	REFL PAV MRK TY I (Y) 4" (BRK) (090MIL)	LF		326	373	319	322	336	45					1721
TxDOT 666 6128	REFL PAV MRK TY I (Y) 4" (SLD) (090MIL)	LF	1511	1497	1490	1275	1266	1400	177	1284	964			11064
TxDOT 666 6137	REFL PAV MRK TY I (Y) 8" (SLD) (090MIL)	LF	82											82
TxDOT 666 6140	REFL PAV MRK TY I (Y) 12" (SLD) (090MIL)	LF	100											100
TxDOT 666 6166	REF PAV MRK TY I (ACC PRK) (W/HT) (SYMBOL)	EA	3											3
TxDOT 666 6170	REF PAV MRK TY II (W) 4" (SLD)	LF	975					29					1234	2238
TxDOT 666 6178	REF PAV MRK TY II (W) 8" (SLD)	LF	100				39	27					0	166
TxDOT 666 6182	REF PAV MRK TY II (W) 24" (SLD)	LF	62				24	22	56				167	331
TxDOT 666 6184	REF PAV MRK TY II (W) (ARROW)	EA	0				2	2						4
TxDOT 666 6196	REF PAV MRK TY II (W) (RR XING)	EA	0						2					2
TxDOT 666 6205	REF PAV MRK TY II (Y) 4" (BRK)	LF	0	326	373	319	322	336	45					1721
TxDOT 666 6207	REF PAV MRK TY II (Y) 4" (SLD)	LF	1511	1497	1490	1275	1266	1400	177	1284	964			11064
TxDOT 666 6211	REF PAV MRK TY II (Y) 8" (SLD)	LF	82											82
TxDOT 666 6212	REF PAV MRK TY II (Y) 12" (SLD)	LF	100											100
TxDOT 666 6220	REF PAV MRK TY II (ACC PRK) (W/HT) (SYMBOL)	EA	3											3
TxDOT 672 6007	REFL PAV MRKR TY I-C	EA	5				4	3						12
TxDOT 672 6009	REFL PAV MRKR TY II-A-A	EA	72	38	40	32	27	32	4	70	48			363
TxDOT 6120 6001	DEAD END ROADWAY BARRICADE	LF									24	16		40

ILLUMINATION - BASE BID																	
ITEM NUMBER	DESCRIPTION	UNIT	SHEET NUMBERS														TOTAL
			268	269	270	271	272	273	274	275	276	277	278	279	280	281	
26 56 00	TYPE "S1" POLE/FIXTURE	EA	10	10	4	3	4	4	4	4	4	5	4	4	2	62	
TxDOT 610 6039	TYPE "S2" POLE/FIXTURE (MATCH EXISTING)	EA													1	1	
TxDOT 416 6029	DRILL SHAFT (RDWY LL POLE) (30 IN)	LF	60	60	24	18	24	24	24	24	30	24	24	20	380		
26 56 00	2" CONDUIT TRENCH & BACKFILL	LF	900	816	445	360	507	444	452	497	442	472	448	441	295	6429	
26 56 00	ELECTRIC SERVICE & METER	EA														1	
26 05 19	#6 XHHW	LF	1600	1632	890	760	884	888	904	984	884	944	896	882	590	12738	
26 05 19	#8 GRD XHHW	LF	800	816	445	380	442	444	452	492	442	472	448	441	295	6369	
26 05 33	BULLBOX, CONCRETE W/ HINGED COVER	EA	1	2		1	1			1					1	8	



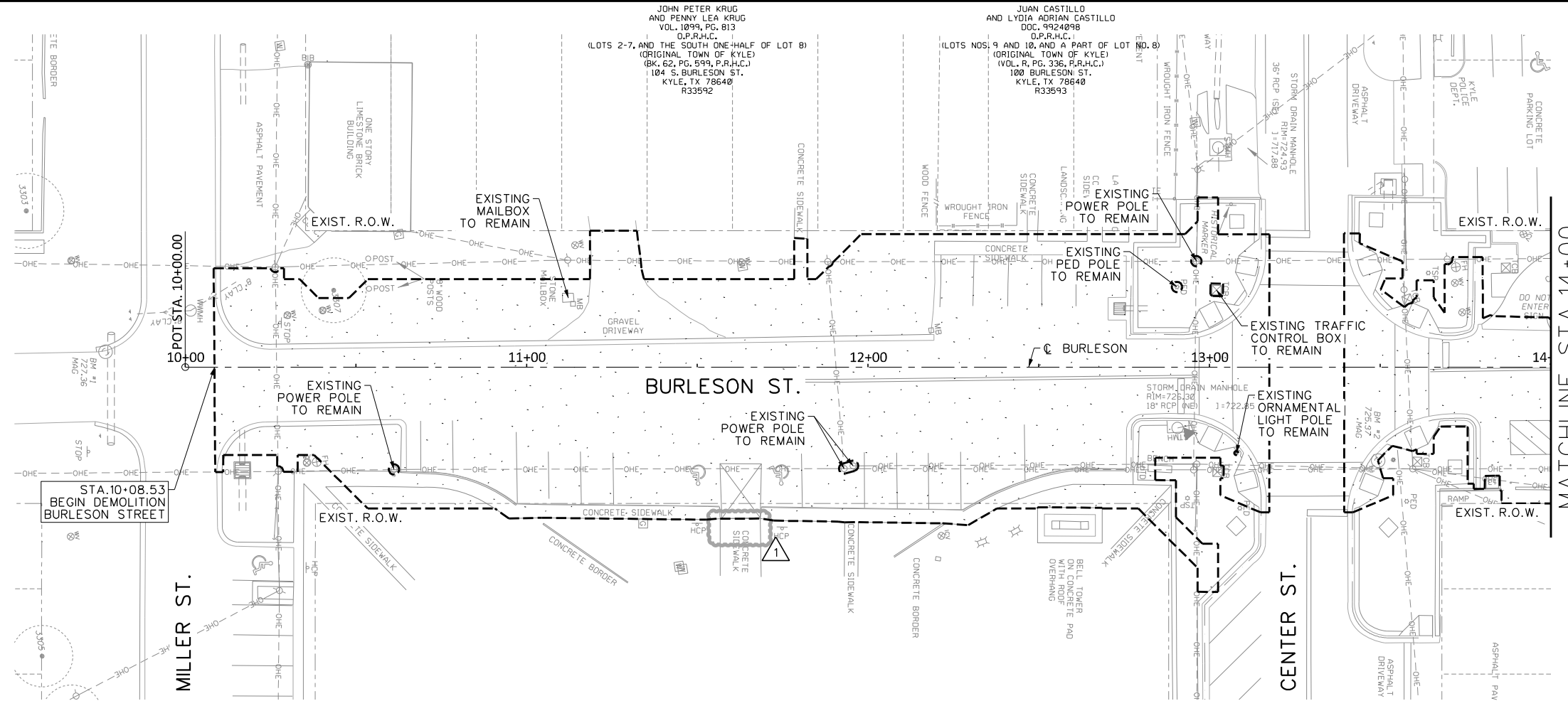
FREES & NICHOLS
 10431 Morado Circle, Suite 300
 Austin, TX 78753
 Phone - (512) 617-3100
 Fax - (512) 617-3101
 Web - www.freese.com

N. BURLESON ST. IMPROVEMENTS
 CIVIL
 SUMMARY - BASE BID

CITY OF KYLE, TEXAS

NO. ISSUES	BY	DATE	FBN JOB NO.	KYL14284
		5/29/18	DATE	5/29/18
			DESIGNED	MJM
			DRAWN	MJM
		6/15/18	REVISED	MJM
			CHECKED	SDB
			FILE NAME	CY-ALL-GN-SUMMARY02.sht
			ADDDENDUM NO. 1	
			VERIFY SCALE	Bar is one inch on original drawing. If not one inch on this sheet, adjust scale.
SHEET	13			
TOTAL	292			

MicroStation V8 User: 025900\Austin
 KYL14284 - N:\Drawings\CV-ALL-GN-SUMMARY02.sht
 Plot Scale: 20000 - 1/8" = 1' - Model: Default
 Date: Jun 15, 2018 - 11:11:37 AM
 Project: Freese and Nichols, Inc.



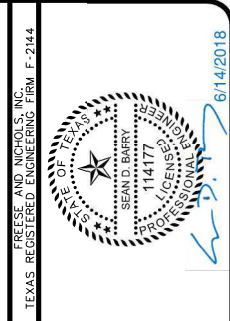
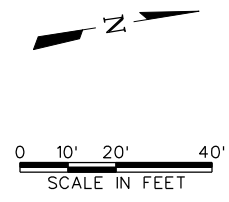
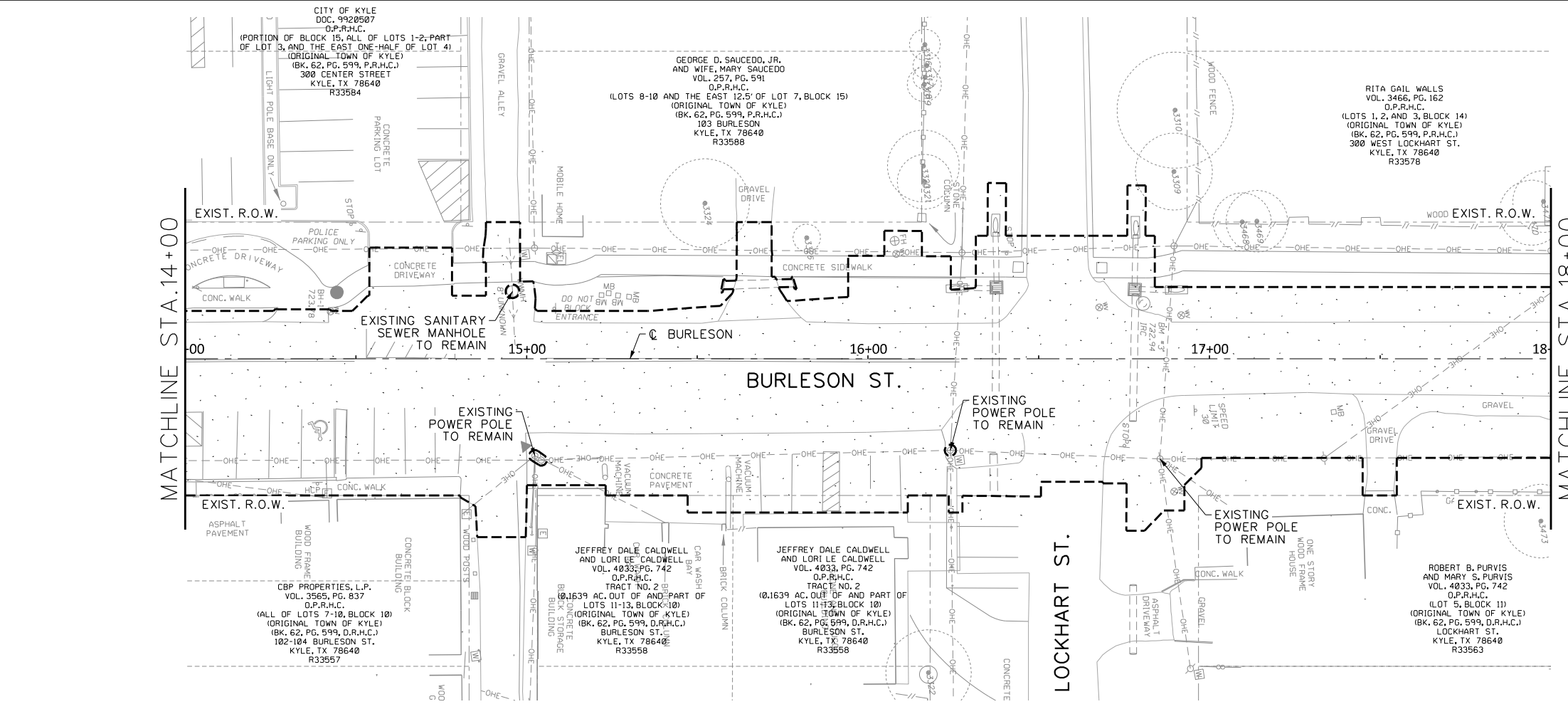
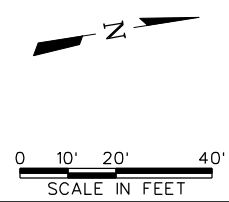
LEGEND

--- DEMO AREA

- - - - - LIMITS OF DEMO AREA

NOTES:

1. REFER TO PAVEMENT PLAN & PROFILE SHEETS FOR DEMOLITION STAKING LIMITS.
2. TREES WITHIN FOOTPRINT OF ROAD AND OTHER PROPOSED IMPROVEMENTS TO BE REMOVED. ALL OTHER TREES WITHIN ROW TO BE TRIMMED UNLESS OTHERWISE NOTED ON PLANS.
3. REMOVAL OF TREES AND PRUNING TO BE PAID FOR UNDER PREP ROW.



FREES & NICHOLS
 10431 Morado Circle, Suite 300
 Dallas, TX 75243
 Phone: (512) 617-3100
 Fax: (512) 617-3101
 Web: www.freeseandnichols.com

N. BURLESON ST. IMPROVEMENTS
 CIVIL
 DEMO PLANS
 STA. 10+00 TO STA. 18+00

NO.	ISSUES	BY	DATE	FN	JOB NO.	DATE	DESIGNED	DRAWN	REVISED	CHECKED	JNR	FILE NAME
					KYL14284	5/29/18	SDB	MJM	6/14/18			CV-TRT-PL-DEM001.sht
ADDENDUM NO. 1 VERIFY SCALE Bar is one inch on original drawing. If not one inch on this sheet, adjust scale.												
SHEET											16	
TOTAL											292	

MicroStation V8 User: 0259001
 KYL14284 - N:\Drawings\CV-TRT-PL-DEM001.sht
 Plot Scale: 10.0000 (1" = 40')
 Date: Jun 14 2018 - 04:00:43 PM
 Project: Freese and Nichols, Inc.

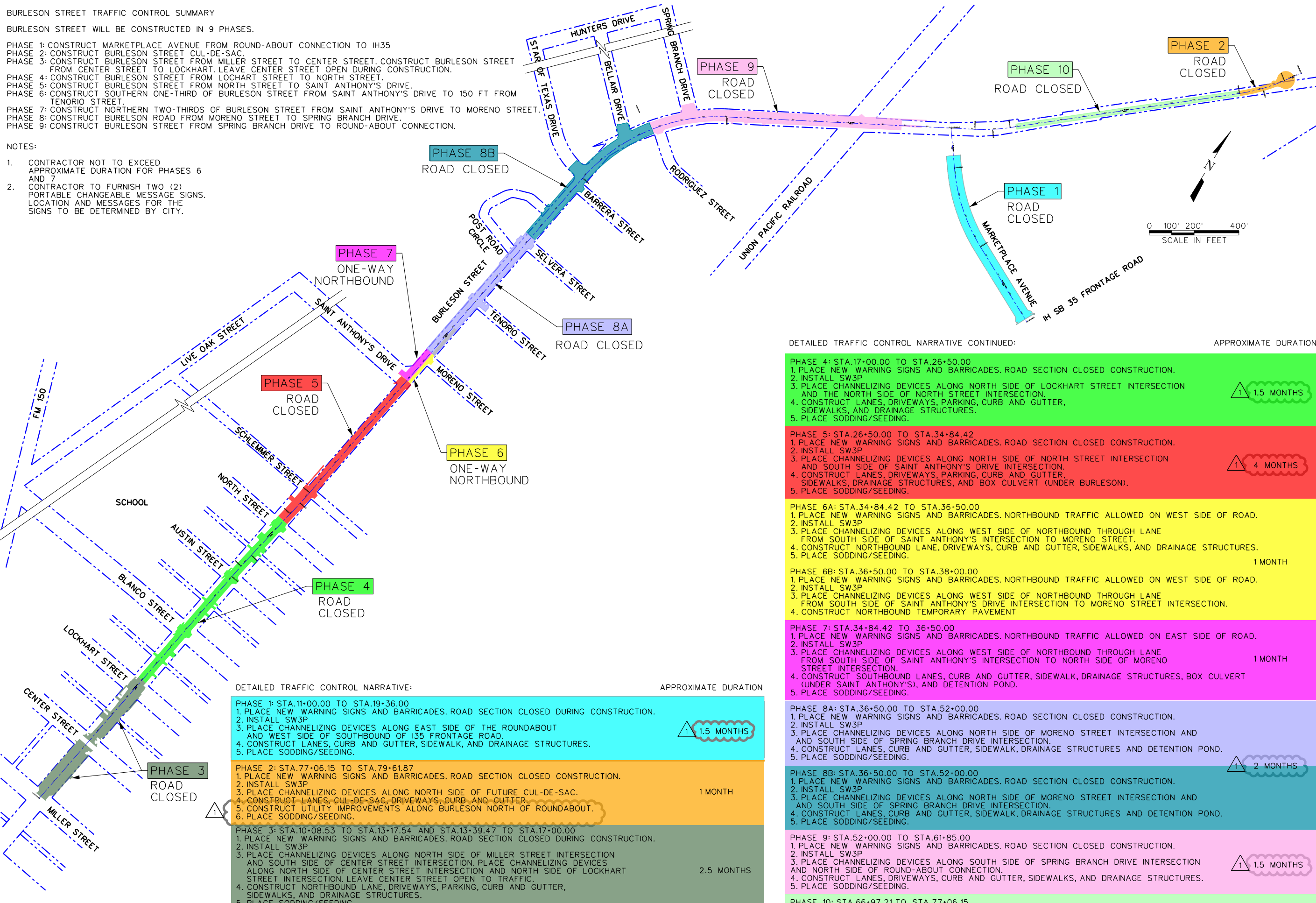
BURLESON STREET TRAFFIC CONTROL SUMMARY

BURLESON STREET WILL BE CONSTRUCTED IN 9 PHASES.

- PHASE 1: CONSTRUCT MARKETPLACE AVENUE FROM ROUND-ABOUT CONNECTION TO IH35
- PHASE 2: CONSTRUCT BURLESON STREET CUL-DE-SAC.
- PHASE 3: CONSTRUCT BURLESON STREET FROM MILLER STREET TO CENTER STREET, CONSTRUCT BURLESON STREET FROM CENTER STREET TO LOCKHART. LEAVE CENTER STREET OPEN DURING CONSTRUCTION.
- PHASE 4: CONSTRUCT BURLESON STREET FROM LOCKHART STREET TO NORTH STREET.
- PHASE 5: CONSTRUCT BURLESON STREET FROM NORTH STREET TO SAINT ANTHONY'S DRIVE.
- PHASE 6: CONSTRUCT SOUTHERN ONE-THIRD OF BURLESON STREET FROM SAINT ANTHONY'S DRIVE TO 150 FT FROM TENORIO STREET.
- PHASE 7: CONSTRUCT NORTHERN TWO-THIRDS OF BURLESON STREET FROM SAINT ANTHONY'S DRIVE TO MORENO STREET.
- PHASE 8: CONSTRUCT BURELSON ROAD FROM MORENO STREET TO SPRING BRANCH DRIVE.
- PHASE 9: CONSTRUCT BURLESON STREET FROM SPRING BRANCH DRIVE TO ROUND-ABOUT CONNECTION.

NOTES:

1. CONTRACTOR NOT TO EXCEED APPROXIMATE DURATION FOR PHASES 6 AND 7
2. CONTRACTOR TO FURNISH TWO (2) PORTABLE CHANGEABLE MESSAGE SIGNS. LOCATION AND MESSAGES FOR THE SIGNS TO BE DETERMINED BY CITY.



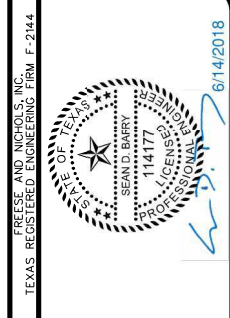
DETAILED TRAFFIC CONTROL NARRATIVE:

PHASE	STATIONING	APPROXIMATE DURATION
PHASE 1	STA.11+00.00 TO STA.19+36.00	1.5 MONTHS
PHASE 2	STA.77+06.15 TO STA.79+61.87	1 MONTH
PHASE 3	STA.10+08.53 TO STA.13+17.54 AND STA.13+39.47 TO STA.17+00.00	2.5 MONTHS

DETAILED TRAFFIC CONTROL NARRATIVE CONTINUED:

PHASE	STATIONING	APPROXIMATE DURATION
PHASE 4	STA.17+00.00 TO STA.26+50.00	1.5 MONTHS
PHASE 5	STA.26+50.00 TO STA.34+84.42	4 MONTHS
PHASE 6A	STA.34+84.42 TO STA.36+50.00	1 MONTH
PHASE 6B	STA.36+50.00 TO STA.38+00.00	1 MONTH
PHASE 7	STA.34+84.42 TO 36+50.00	1 MONTH
PHASE 8A	STA.36+50.00 TO STA.52+00.00	2 MONTHS
PHASE 8B	STA.36+50.00 TO STA.52+00.00	2 MONTHS
PHASE 9	STA.52+00.00 TO STA.61+85.00	1.5 MONTHS
PHASE 10	STA.66+97.21 TO STA.77+06.15	1 MONTH

MicroStation V8 User: 025900\Austin
 KYL14284.dwg
 Plot Scale: 1/8" = 1'-0"
 Date: Jun 14, 2018 4:04:50 PM
 Project: Freese and Nichols, Inc.

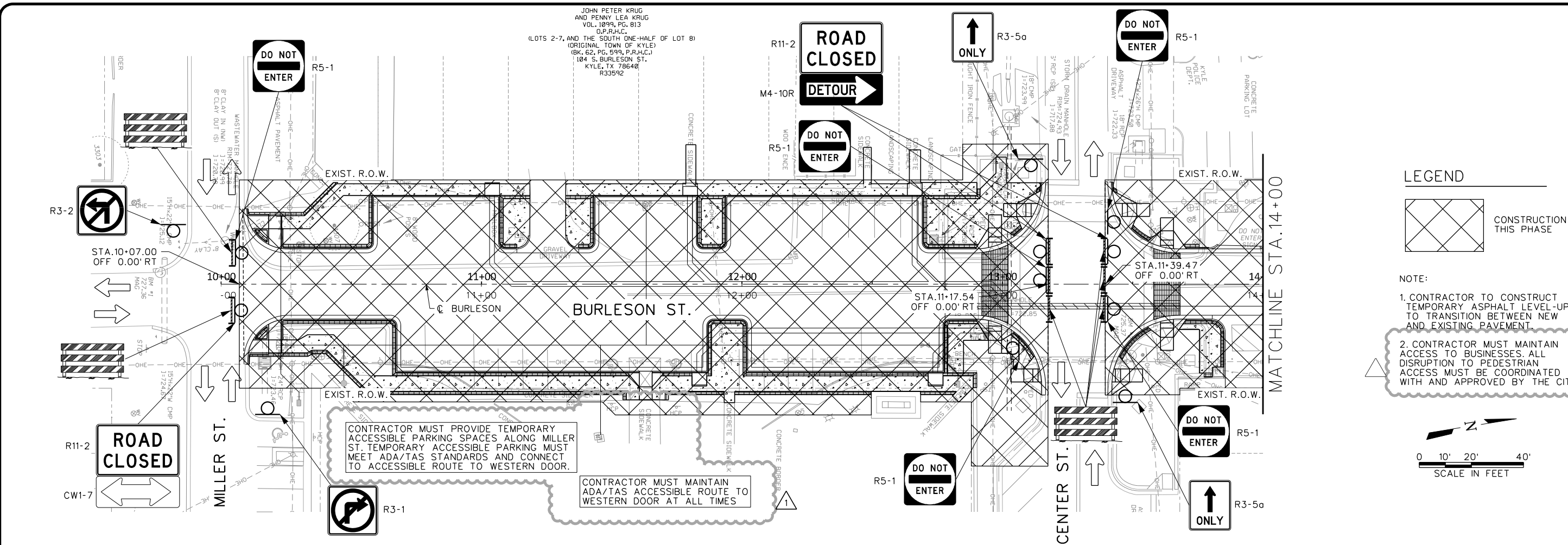


FREES AND NICHOLS
 10431 Morado Circle, Suite 300
 Austin, TX 78759
 Phone: (512) 677-3100
 Fax: (512) 677-3101
 Web: www.freese.com

N. BURLESON ST. IMPROVEMENTS
 CIVIL
 CITY OF KYLE, TEXAS
 TRAFFIC CONTROL PHASING PLANS

NO.	ISSUES	DATE	BY	DESIGNED	DRAWN	REVISION	CHECKED	JNR	FILE NAME
1	ADDENDUM NO. 1	5/23/18	SDB	SDB	MJM	6/14/18			CV-IRT-SCH-TCP_TIMELINE.sht

MicroStation V8 User: 025900\Office - Austin
 KYL14284.dwg - N:\Drawings\CV-TR1-PL-TCP PHASE0301.sht
 Plot Scale: 1/8" = 1'-0" (1/8" = 1'-0")
 Date: Jun 15, 2018 - 10:39:56 AM
 Project: Freese and Nichols, Inc.

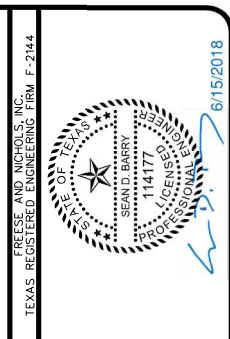
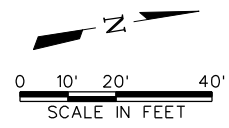
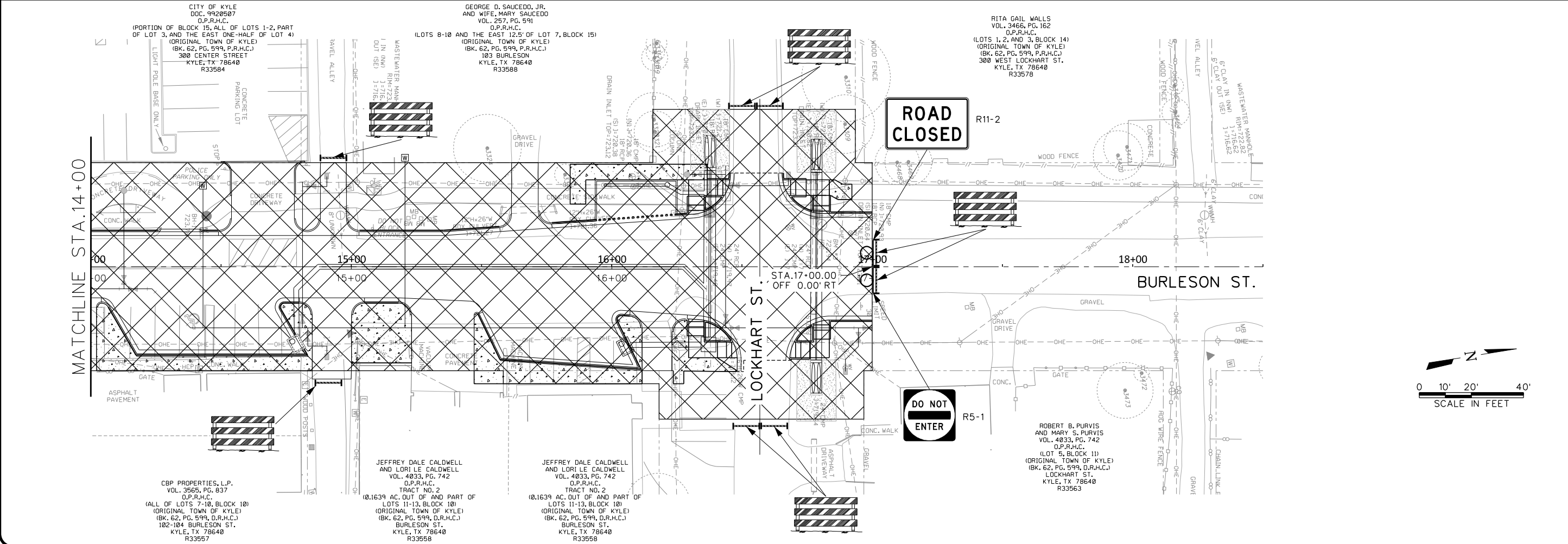
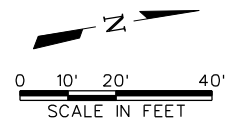


LEGEND

CONSTRUCTION THIS PHASE

NOTE:

1. CONTRACTOR TO CONSTRUCT TEMPORARY ASPHALT LEVEL-UP TO TRANSITION BETWEEN NEW AND EXISTING PAVEMENT.
2. CONTRACTOR MUST MAINTAIN ACCESS TO BUSINESSES. ALL DISRUPTION TO PEDESTRIAN ACCESS MUST BE COORDINATED WITH AND APPROVED BY THE CITY.



FREES AND NICHOLS
 10431 Morado Circle, Suite 300
 Dallas, TX 75243
 Phone: (512) 617-3100
 Fax: (512) 617-3101
 Web: www.freese.com

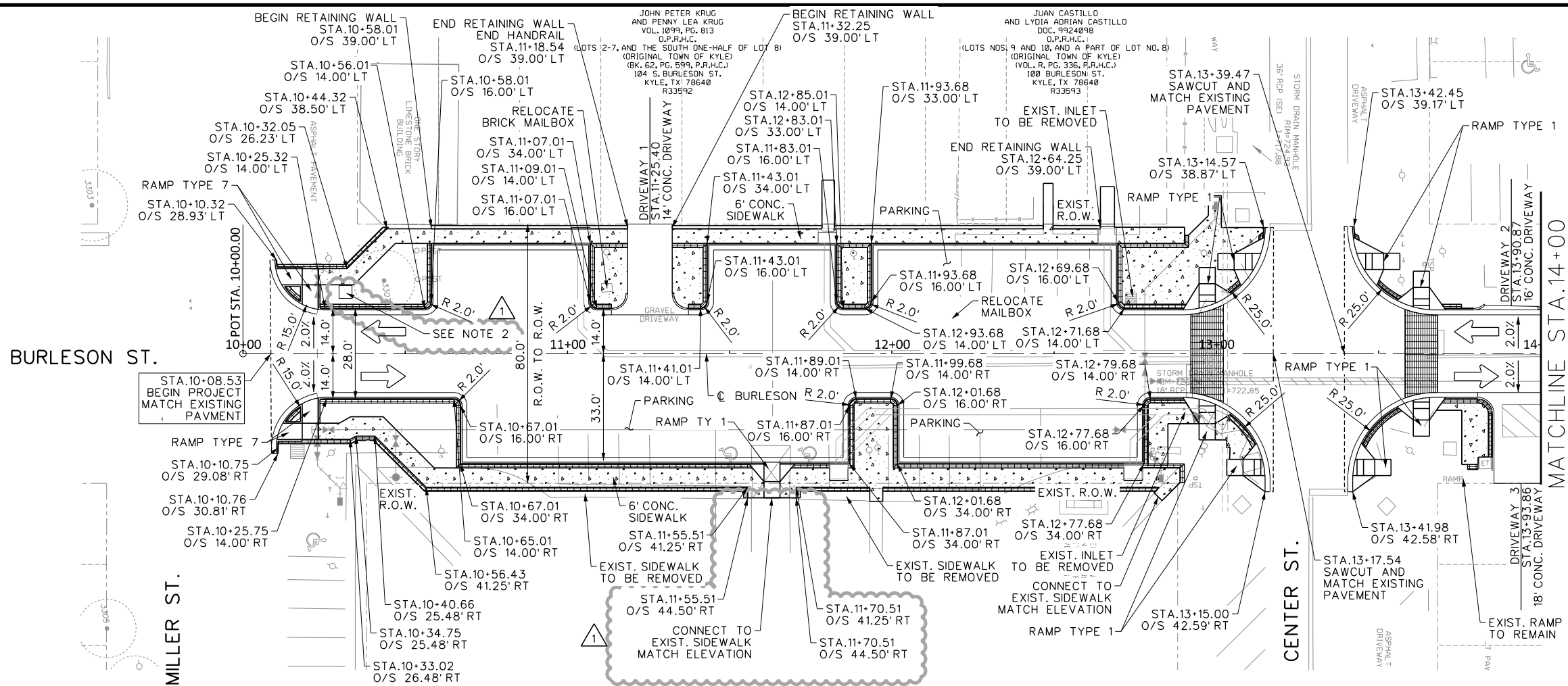
CITY OF KYLE, TEXAS
N. BURLESON ST. IMPROVEMENTS
 CIVIL
TRAFFIC CONTROL PLAN PHASE 3
STA. 10+00 TO STA. 18+50

NO.	ISSUES	BY	DATE	FN	JOB NO.	DATE	DESIGNED	SDB	DRAWN	REVISION	CHECKED	JNR
1	ADDENDUM NO. 1	SDB	6/15/18	KYL14284	5/29/18							

VERIFY SCALE Bar is one inch on original drawing. If not one inch on this sheet, adjust scale. CV-TR1-PL-TCP PHASE0301.sht

SHEET **37**

TOTAL 292

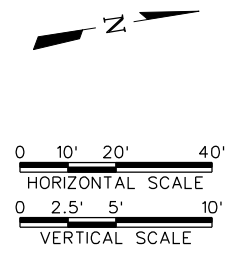
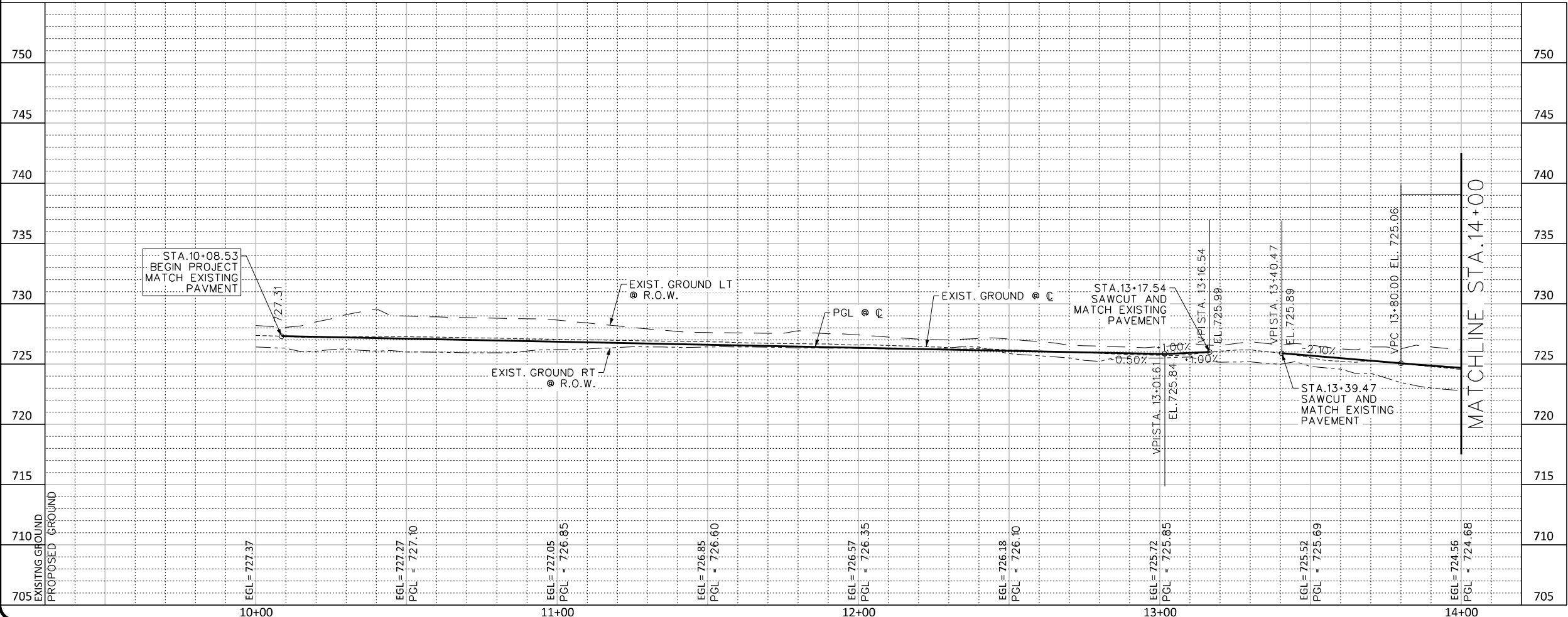


LEGEND

- ← TRAFFIC DIRECTION
- ▨ CONCRETE SIDEWALK
- ▨ ORNAMENTAL PATTERN

NOTE:

- ALL MEASUREMENTS TAKEN FROM BACK OF CURB (BOC) UNLESS OTHERWISE NOTED ON PLANS.
- CONSTRUCT 4'X4' REINFORCED CONCRETE PAD (8" THICK). INSTALL DECORATIVE 12-TENANT MAILBOX AS DESCRIBED IN ITEM 560 IN THE GENERAL NOTES.

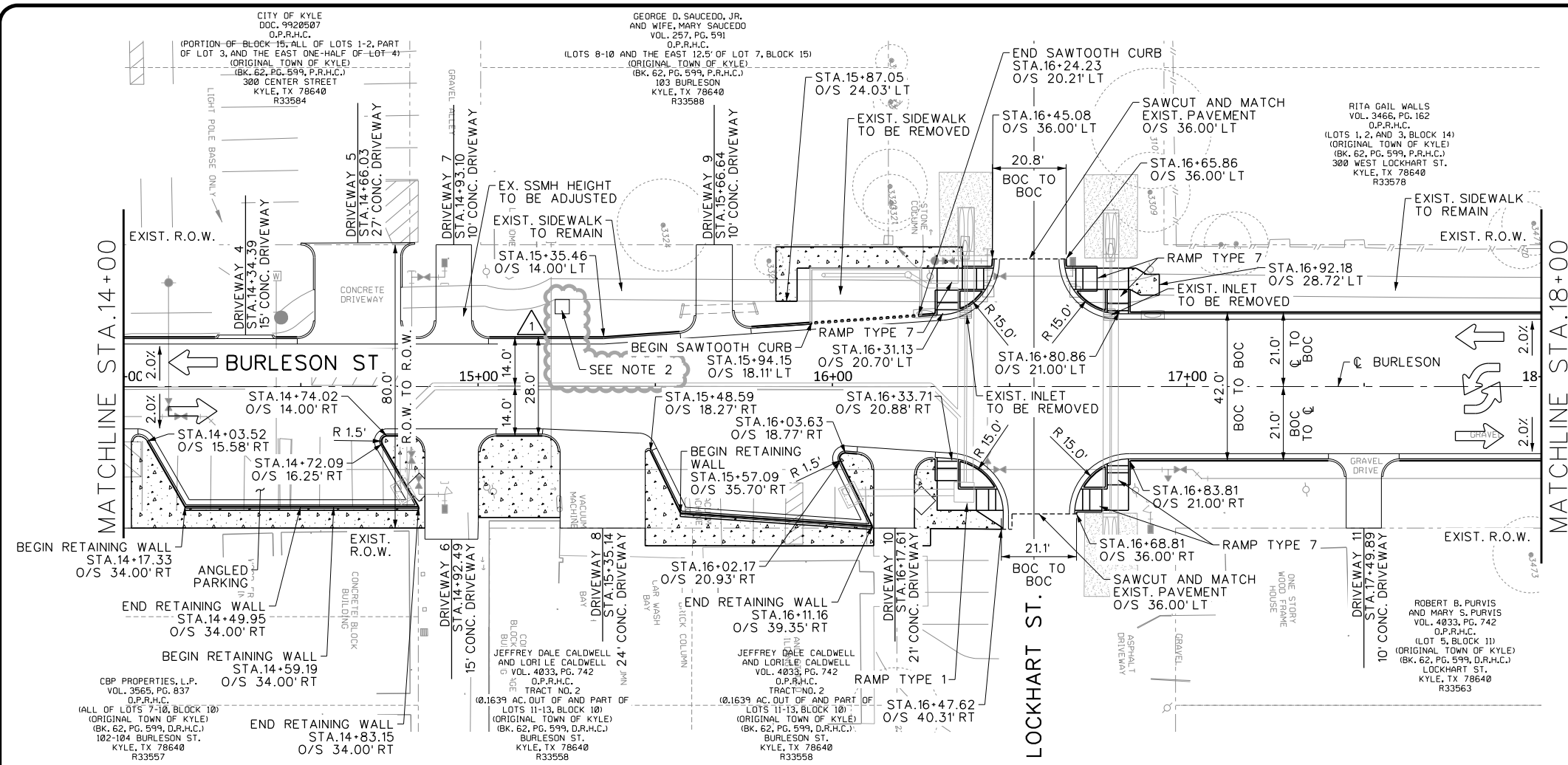


FREES & NICHOLS
 10431 Morado Circle, Suite 300
 Dallas, TX 75243
 Phone: (512) 617-3100
 Fax: (512) 617-3101
 Web: www.freese.com

CITY OF KYLE, TEXAS
N. BURLESON ST. IMPROVEMENTS
 CIVIL
PAVEMENT PLAN & PROFILE SHEETS
STA. 10+00 TO STA. 14+00

NO.	ISSUES	BY	DATE	FN	JOB NO.	DATE	DESIGNED	SD	DRAWN	REVISION	CHECKED	JNR	FILE NAME
					KYL14284	5/29/18				6/15/18			CV-TRT-PL-ROAD01.sht
ADDENDUM NO. 1 VERIFY SCALE Bar is one inch on original drawing. If not one inch on this sheet, adjust scale.													
SHEET												73	
TOTAL												292	

MicroStation V8 User: 0259001; Austin, TX 78744; N:\V\Drawings\CV-TRT-PL-ROAD01.sht; Plot Scale: 1/4" = 1'-0"; Plot Date: Jun 15, 2018 10:40:01 AM; Project: Freese and Nichols, Inc.



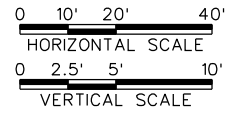
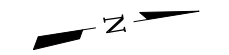
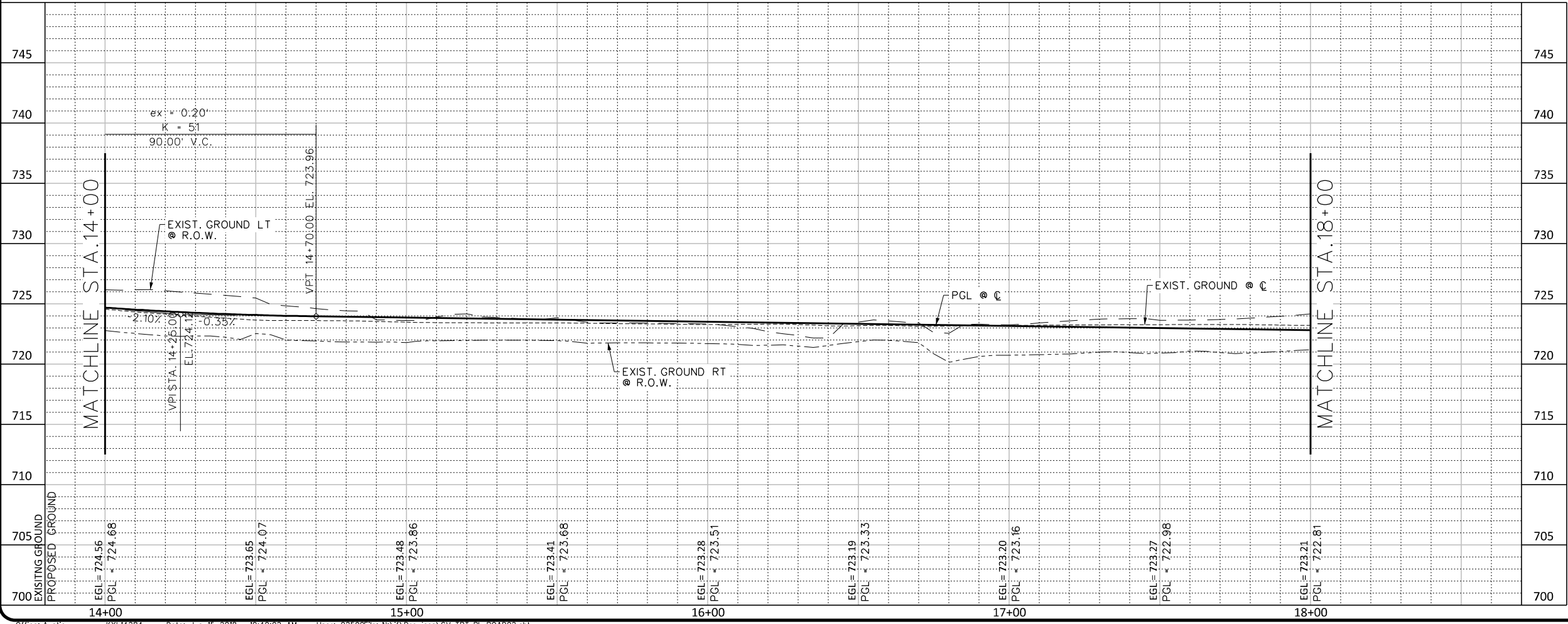
LEGEND

← TRAFFIC DIRECTION

▨ CONCRETE SIDEWALK

NOTE:

- ALL MEASUREMENTS TAKEN FROM BACK OF CURB (BOC) UNLESS OTHERWISE NOTED ON PLANS.
- CONSTRUCT 4'X4' REINFORCED CONCRETE PAD (8" THICK). INSTALL DECORATIVE 12-TENANT MAILBOX AS DESCRIBED IN ITEM 560 IN THE GENERAL NOTES.



CITY OF KYLE, TEXAS

GEORGE D. SAUCEDO, JR. AND WIFE, MARY SAUCEDO VOL. 257, PG. 591 O.P.R.H.C. (ORIGINAL TOWN OF KYLE) (BK. 62, PG. 599, P.R.H.C.) 103 BURLESON ST. KYLE, TX 78640 R33588

RITA GAIL WALLS VOL. 3466, PG. 162 O.P.R.H.C. (LOTS 1, 2, AND 3, BLOCK 14) (ORIGINAL TOWN OF KYLE) (BK. 62, PG. 599, P.R.H.C.) 300 WEST LOCKHART ST. KYLE, TX 78640 R33578

ROBERT B. PURVIS AND MARY S. PURVIS VOL. 4033, PG. 742 O.P.R.H.C. (LOT 5, BLOCK 11) (ORIGINAL TOWN OF KYLE) (BK. 62, PG. 599, D.R.H.C.) LOCKHART ST. KYLE, TX 78640 R33563

JEFFREY DALE CALDWELL AND LORILEE CALDWELL VOL. 4033, PG. 742 O.P.R.H.C. TRACT NO. 2 (0.1639 AC. OUT OF AND PART OF LOTS 11-13, BLOCK 10) (ORIGINAL TOWN OF KYLE) BURLESON ST. KYLE, TX 78640 R33558

JEFFREY DALE CALDWELL AND LORILEE CALDWELL VOL. 4033, PG. 742 O.P.R.H.C. TRACT NO. 2 (0.1639 AC. OUT OF AND PART OF LOTS 11-13, BLOCK 10) (ORIGINAL TOWN OF KYLE) BURLESON ST. KYLE, TX 78640 R33558

CBP PROPERTIES, L.P. VOL. 3565, PG. 837 O.P.R.H.C. (ALL OF LOTS 7-10, BLOCK 10) (ORIGINAL TOWN OF KYLE) (BK. 62, PG. 599, D.R.H.C.) 102-104 BURLESON ST. KYLE, TX 78640 R33557

CITY OF KYLE O.P.R.H.C. (PORTION OF BLOCK 16 AND ALL OF LOTS 1-2, PART OF LOT 3, AND THE EAST ONE-HALF OF LOT 4) (ORIGINAL TOWN OF KYLE) (BK. 62, PG. 599, P.R.H.C.) 300 CENTER STREET KYLE, TX 78640 R33584

FREESSE AND NICHOLS, INC.

10431 Morado Circle, Suite 300
Phon: (512) 673-3100
Fax: (512) 673-3100
Web: www.freese.com

STATE OF TEXAS
SEAL OF ENGINEER
114177
PROFESSIONAL ENGINEER

TEXAS REGISTERED ENGINEERING FIRM F-2144

6/15/2018

CITY OF KYLE, TEXAS

N. BURLESON ST. IMPROVEMENTS

CIVIL

PAVEMENT PLAN & PROFILE SHEETS

STA. 14+00 TO STA. 18+00

NO.	ISSUES	BY	DATE	FN	JOB NO.
					KYL14284
			5/29/18	DATE	DESIGNED
				DRAWN	SDB
			6/15/18	REVISED	MJM
				CHECKED	JNR
				FILE NAME	CV-TRT-PL-ROAD02.sht

ADDENDUM NO. 1

VERIFY SCALE Bar is one inch on original drawing. If not one inch on this sheet, adjust scale.

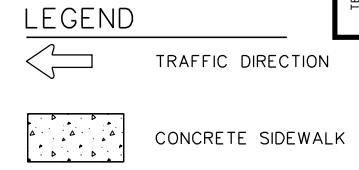
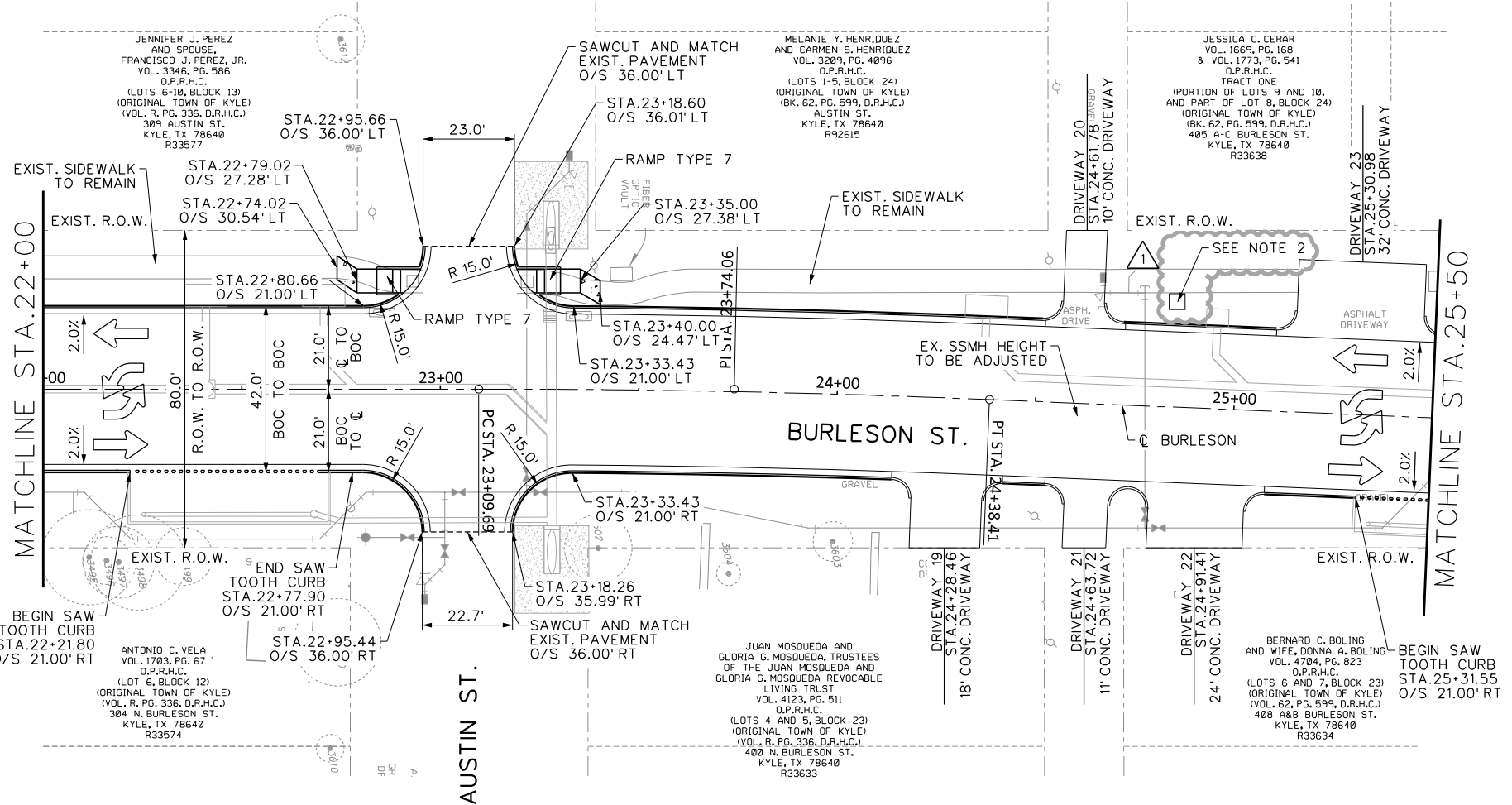
SHEET **74**

TOTAL 292

MicroStation V8 User: 025900\Office - Austin
KYL14284 - N:\V\Drawings\CV - TRT - PL - ROAD02.sht
Plot Scale: 40.0000 15.0000 in. Plot - Monitors
Date: Jun 15, 2018 - 10:40:02 AM
Project: Freese and Nichols, Inc.

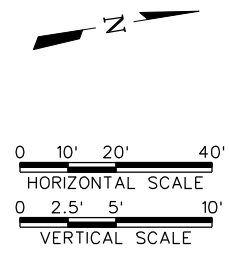
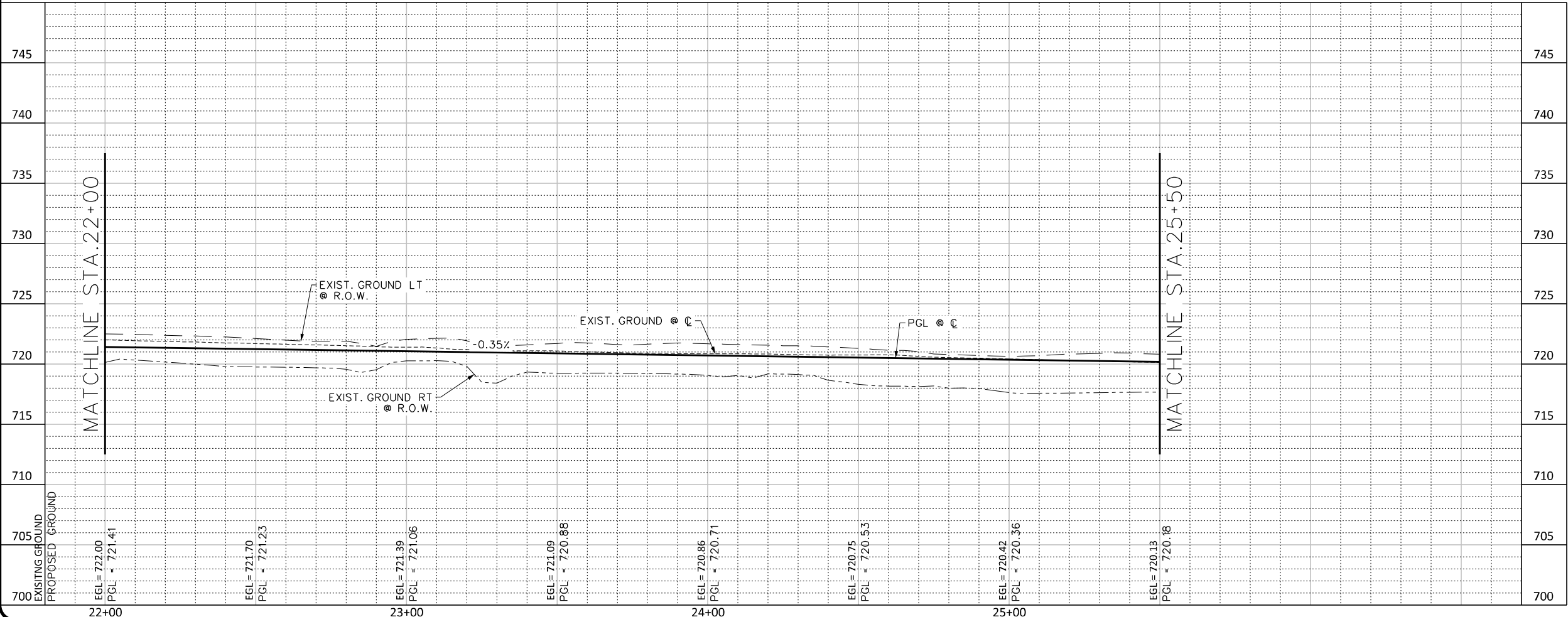
CITY OF KYLE, TEXAS
N. BURLESON ST. IMPROVEMENTS
 CIVIL
PAVEMENT PLAN & PROFILE SHEETS
STA. 22+00 TO STA. 25+50

NO.	ISSUES	BY	DATE	FN	JOB NO.
					KYL14284
			5/29/18	DATE	
				DESIGNED	SDB
				DRAWN	MJM
			6/15/18	REVISED	
				CHECKED	JNR
				FILE NAME	
					CV-TRT-PL-ROAD04.sht

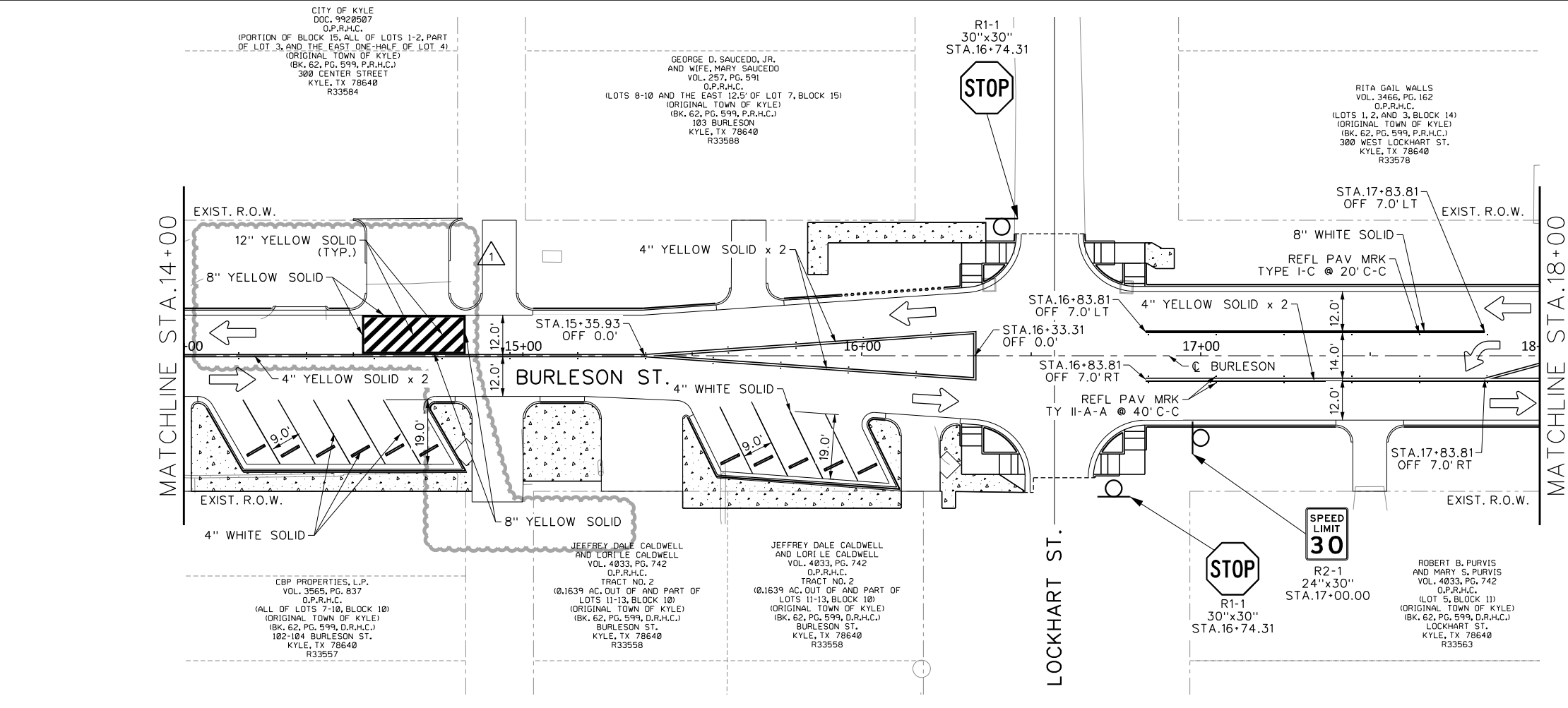
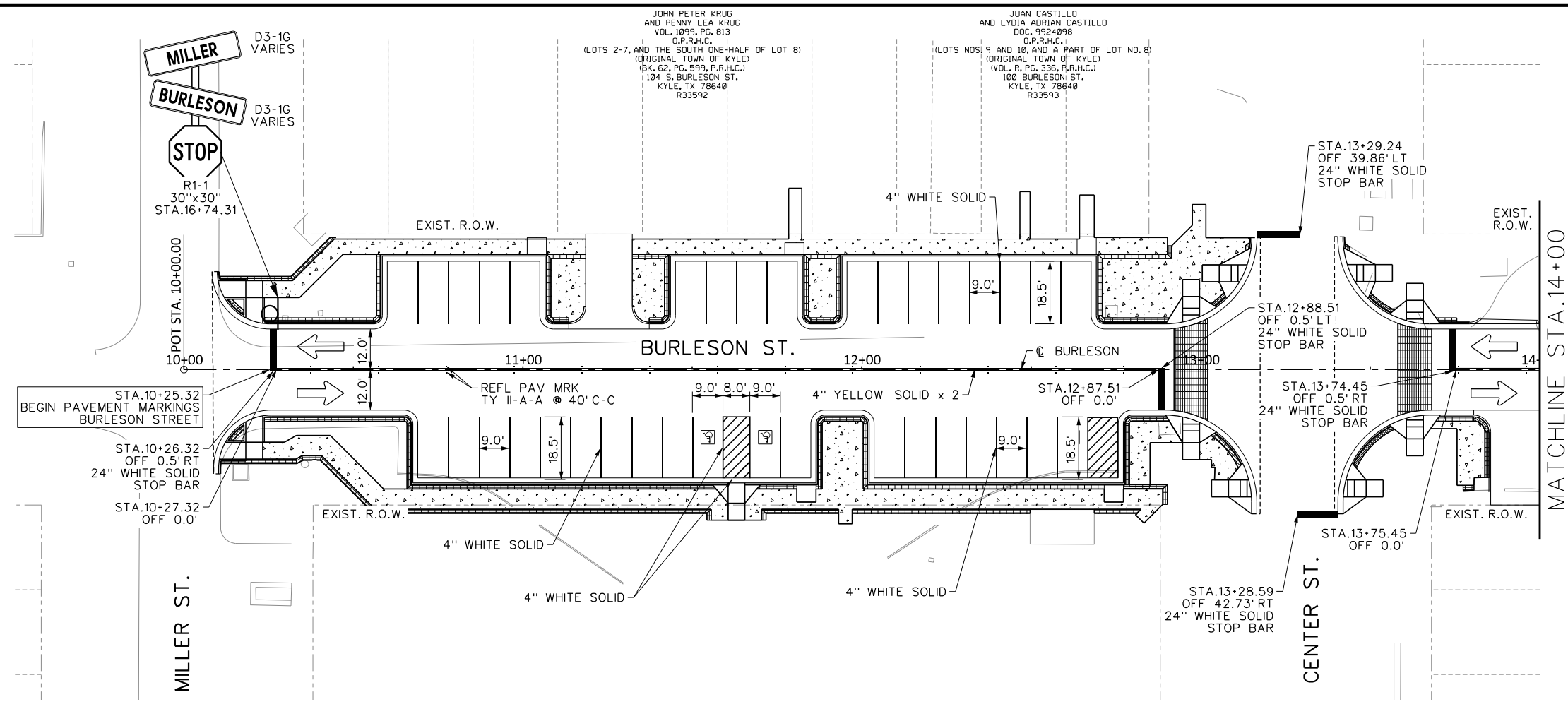


NOTE:

- ALL MEASUREMENTS TAKEN FROM BACK OF CURB (BOC) UNLESS OTHERWISE NOTED ON PLANS.
- CONSTRUCT 4'X4' REINFORCED CONCRETE PAD (8" THICK). INSTALL DECORATIVE 12-TENANT MAILBOX AS DESCRIBED IN ITEM 560 IN THE GENERAL NOTES.

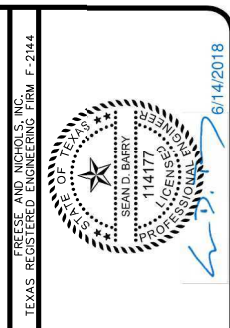
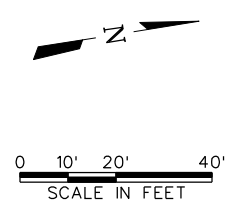
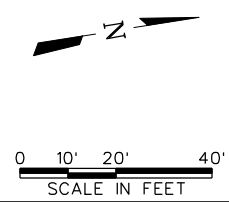


MicroStation V8 User: 02590\Office - Austin
 KYL14284 - N:\Drawings\CV-TRT-PL-ROAD04.sht
 Plot Scale: 40.0000 15.0000 in. Plot File: PDR-Monday Model: Default
 Date: Jun 15, 2018 - 10:40:03 AM Project: Freese and Nichols, Inc.



LEGEND
 TRAFFIC DIRECTION

NOTE:
 STREET NAME SIGNS SHALL BE FURNISHED TO MATCH CITY OF KYLE STANDARD STREET NAME SIGN DESIGN. SEE GENERAL NOTES ITEM 644.



FREES & NICHOLS
 10431 Morado Circle, Suite 300
 Austin, TX 78753
 Phone: (512) 673-3100
 Fax: (512) 673-3101
 Web: www.freese.com

CITY OF KYLE, TEXAS
N. BURLESON ST. IMPROVEMENTS
 CIVIL
PAVEMENT MARKING AND SIGN PLANS
STA. 10+00 TO STA. 18+00

NO.	ISSUES	BY	DATE	FN	JOB NO.	DATE	DESIGNED	SD	DRAWN	REVISION	CHECKED	JNR
1	ADDENDUM NO. 1	SDB	6/14/18		KYL14284	5/29/18						

VERIFY SCALE Bar is one inch on original drawing. If not one inch on this sheet, adjust scale.

SHEET **205**
 TOTAL 292

MicroStation V8 User: 0259001
 KYL14284.dwg
 N:\Drawings\CV-TR1-PL-PVMT\MRK01.sht
 Plot Scale: 1/8" = 1'-0"
 Date: Jun 14, 2018 - 04:00:54 PM
 Project: Freese and Nichols, Inc.