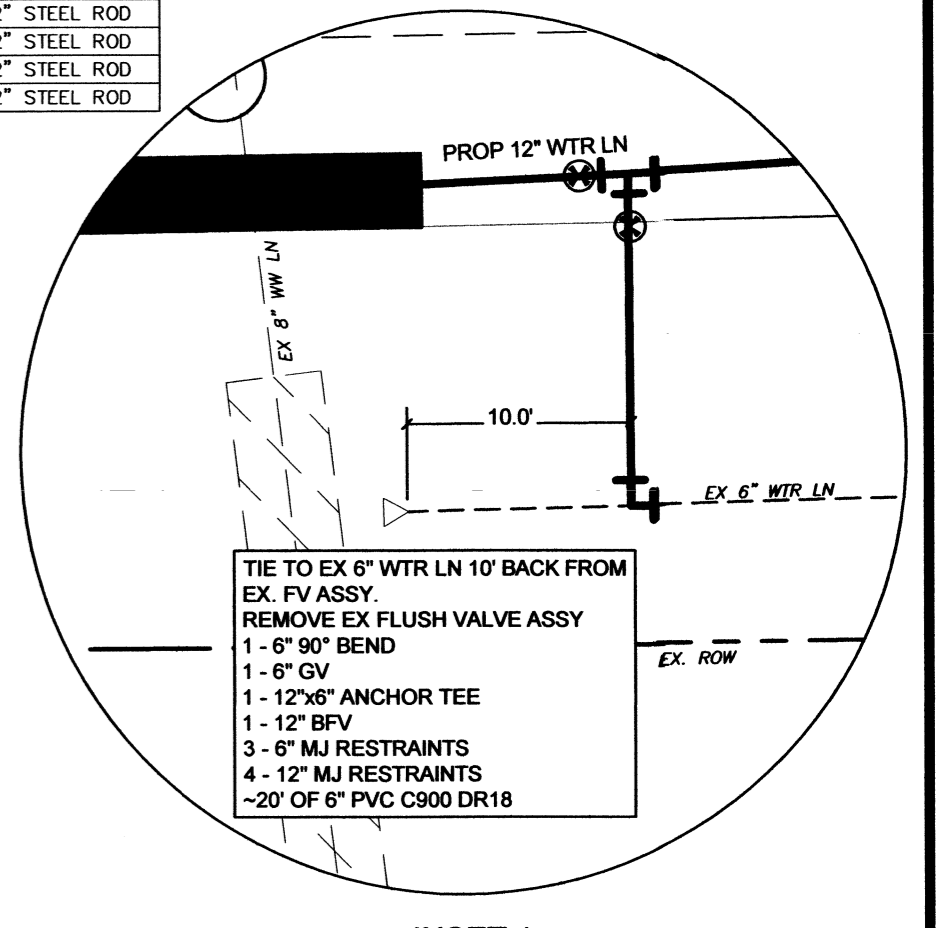
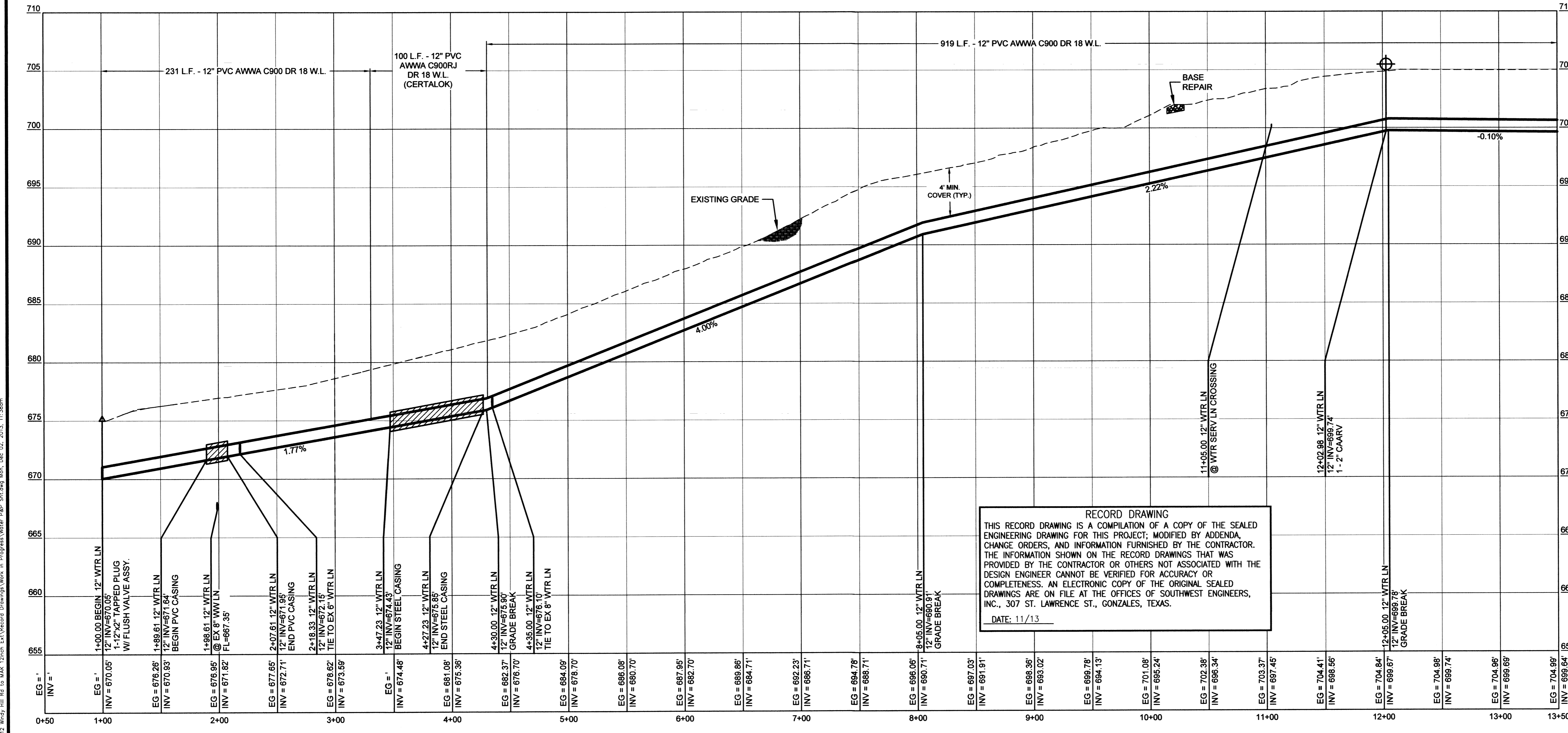
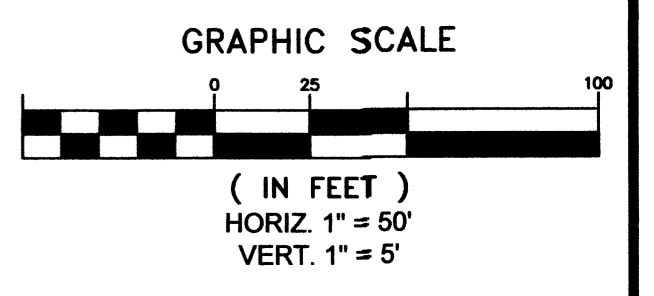


MATCHLINE STA: 13+50  
SEE DWG. WD-2

POINT NUMBER	NORTHING (SURF)	EASTING (SURF)	ELEVATION	DESCRIPTION
BENCHMARK 1	13925922.38	2338438.04	702.10'	24" X 1/2" STEEL ROD
BENCHMARK 2	13925444.90	2340379.99	653.12'	24" X 1/2" STEEL ROD
BENCHMARK 3	13925390.13	2341295.98	672.18'	24" X 1/2" STEEL ROD
BENCHMARK 4	13925431.16	2342505.27	665.22'	24" X 1/2" STEEL ROD
BENCHMARK 5	13925928.82	2339445.60	659.07'	24" X 1/2" STEEL ROD
BENCHMARK 6	13925888.06	2337057.58	677.83'	24" X 1/2" STEEL ROD

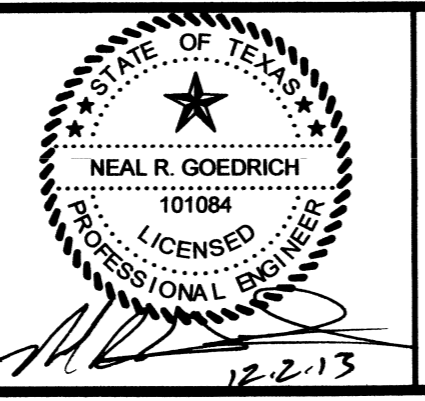


**RECORD DRAWING**  
THIS RECORD DRAWING IS A COMPILATION OF A COPY OF THE SEALED ENGINEERING DRAWING FOR THIS PROJECT; MODIFIED BY ADDENDA, CHANGE ORDERS, AND INFORMATION FURNISHED BY THE CONTRACTOR. THE INFORMATION SHOWN ON THE RECORD DRAWINGS THAT WAS PROVIDED BY THE CONTRACTOR OR OTHERS NOT ASSOCIATED WITH THE DESIGN ENGINEER CANNOT BE VERIFIED FOR ACCURACY OR COMPLETENESS. AN ELECTRONIC COPY OF THE ORIGINAL SEALED DRAWINGS ARE ON FILE AT THE OFFICES OF SOUTHWEST ENGINEERS, INC., 307 ST. LAWRENCE ST., GONZALES, TEXAS.  
DATE: 11/13

- NOTES:**
- CONTRACTOR SHALL CALL "ONE CALL SYSTEM OF TEXAS", 1 (800) 545-6005, PRIOR TO CONSTRUCTION FOR LOCATION OF ALL UNDERGROUND UTILITIES.
  - OFFSETS TAKEN FROM FENCE LINE/R.O.W. LINE.
  - 12" WATER LINE SHALL BE PVC C900 DR-18.
  - STEEL CASING SHALL BE 20" WITH A THICKNESS OF AT LEAST 0.375 INCHES CONFORMING TO ASTM A53.
  - WATER LINE TO BE BEDDED IN PEA GRAVEL, 3/8" DIAMETER OR SMALLER OR MANUFACTURED SAND.
  - 12" WIDE DETECTABLE MARKING TAPE TO BE PLACED PER DETAILS.
  - TRENCH SAFETY PROTECTION REQUIRED FOR TRENCH DEPTHS GREATER THAN 5'.
  - CASING SPACERS AND END SEALS ARE REQUIRED FOR PVC LINE WITHIN CASING. 3 SPACERS PER JOINT.
  - RIGHT-OF-WAY DIMENSIONS, ELEVATIONS AND UTILITY LOCATIONS ARE BASED ON SURVEY INFORMATION PROVIDED BY MAVERICK ENGINEERING.
  - MJ RESTRAINTS SHALL BE EBAA MEGA-LUG, OR APPROVED EQUAL. ALL FITTINGS SHALL BE RESTRAINED.
  - GATE VALVES & FIRE HYDRANTS TO BE MANUFACTURED BY MUELLER OR CLOW.
  - ALL WATER LINES SHALL HAVE A MINIMUM COVER OF 4'.
  - ALL DRIVEWAYS SHALL BE REPAIRED TO MEET OR EXCEED CURRENT CONDITIONS.
  - ALL BURIED DUCTILE IRON PIPE FITTINGS SHALL BE WRAPPED W/8 MIL POLYETHYLENE AND SEALED IN ACCORDANCE WITH AWWA C105. THE POLYETHYLENE WRAP SHALL BE SECURED WITH SUITABLE TAPE.

NO.	REVISION	DATE

THE SEAL APPEARING ON THIS DOCUMENT WAS AUTHORIZED BY NEAL R. GOEDRICH, P.E. #101084 ON THE DATE INDICATED. ANY ALTERATIONS OF THIS SEALED DOCUMENT WITHOUT PROPER NOTIFICATION TO THE RESPONSIBLE ENGINEER IS AN OFFENSE UNDER THE TEXAS ENGINEERING PRACTICE ACT.



**Southwest Engineers, Inc.**  
Civil - Environmental - Planning  
Gonzales Buda  
307 St. Lawrence 142 Cimarron Park Loop, Suite A  
Gonzales, Texas 78620-3935 Buda, Texas 78610  
830-672-7546 (phone) - 830-672-2034 (fax) 512-312-4336 (phone) - 830-672-2034 (fax)  
www.swengineers.com  
sw@swengineers.com  
TPE No. F-1009

**WARNING**  
IF THIS BAR DOES NOT MEASURE 1",  
THE DRAWING IS NOT TO SCALE

DRAWN BY: AL DATE: 12/12  
CHECKED BY: NG DATE: 12/12

**WATER DISTRIBUTION IMPROVEMENTS**  
**WINDY HILL ROAD TO MAK - 12" WATER LINE EXTENSION**  
**BEGIN - 13+50**  
**GOFORTH S.U.D.**  
HAYS COUNTY, TEXAS

PROJECT NO. 0092-069-12  
DRAWING NO. WD-1  
SHEET 2 OF 9

S:\Projects\1\0092-069-12\Wind\_Hill\_Rd\_to\_MAK\_12inch\_Ext\Record Drawings\Work in Progress\Water\_P&P\_Shl.dwg Mod. Dec. 02, 2013, 11:38am