



# STATE OF THE CITY 2014



## Creating a flagship community

Presented by Lucy Johnson  
Mayor, City of Kyle

# 41.3 Million

64% increase from 2010 population

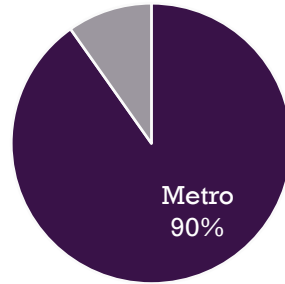
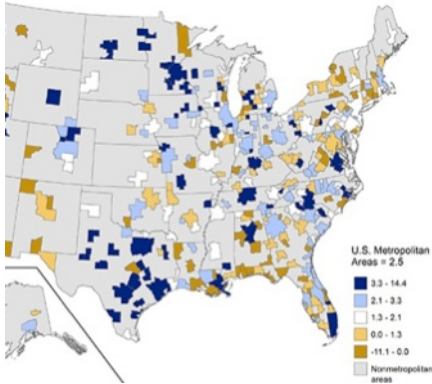
# 202%

474,000 people in Hays County by 2050  
Fastest growing county in Texas

# 2032

85,000+ living in Kyle

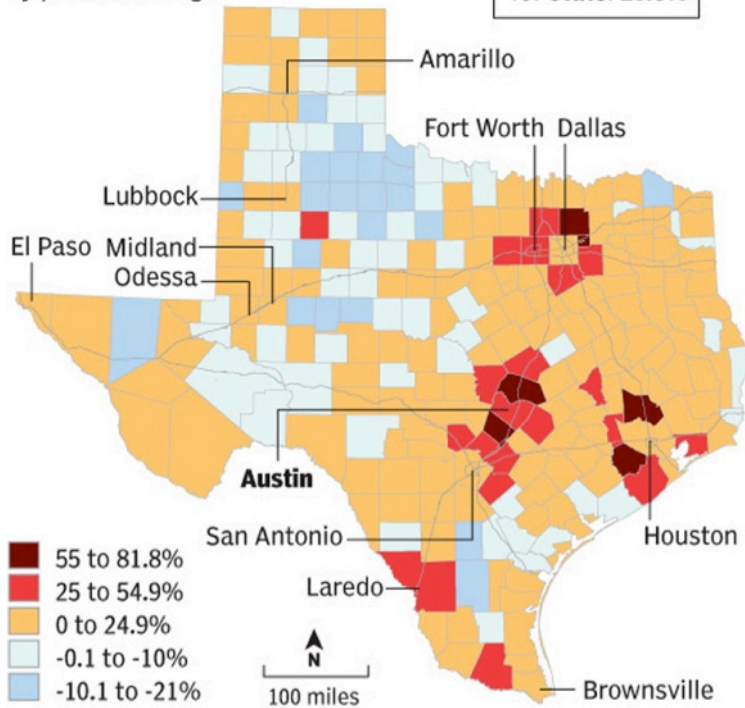
# US GDP



## Texas' shifting population

By percent change

Percent change for state: **20.6%**



Source: U.S. Census Bureau

AMERICAN-STATESMAN

## US Metro Areas



85% of total US Population

90% of US GDP

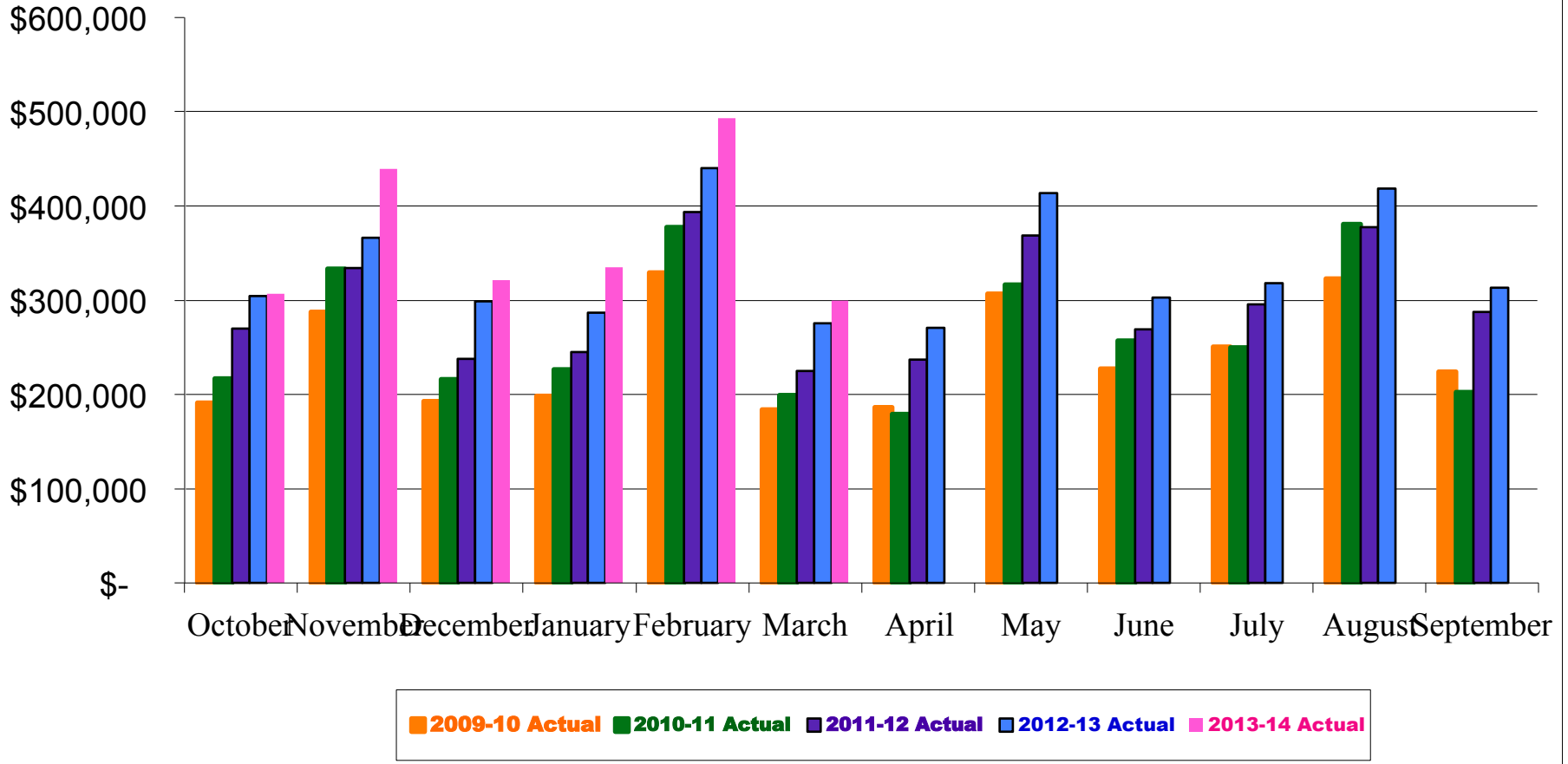
Austin Metro GDP growth ranked #17 out of 363 US Metro Areas

Austin Metro Unemployment Rate of 4.5% (Dec 2013)



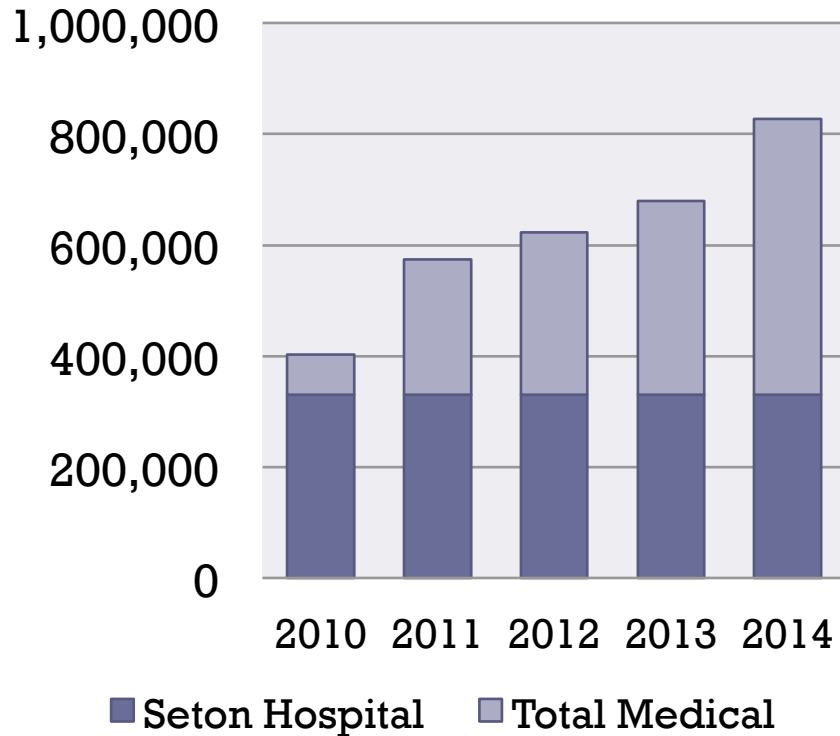
# City Sales Tax Collection

FY2010-FY2014





## Medical Square Footage



## Expanding Medical Services in Kyle



1,800 Total Medical Jobs ranging in salary from \$25,000 to 100,000+

Less than 40% of total square footage comes from original Seton Medical Center

Warm Springs Rehab Hospital to open this summer

# + 2013 New Businesses

## Economic Development

7-Eleven

Ross

Avis & Budget Car Rental

RV Land

Chicken Express

Specialty Concrete Coatings of Texas

Firehouse Subs

Sylvan Learning Center

Firestone

The Little Gym

Go2Danz

The Overlook at Plum Creek

Gun Guys & Gals

Tiaras Boutique

Hallmark

Water Works Auto Spa

Money & More Pawn

Wings to Go

Orchard Park of Kyle

Oxygen Fitness

CPL Lab

Hays Orthopedic & Sports Medicine

Howerton Eye Center

Kyle Family & Injury Chiropractor

Kyle Orthodontics

Vision Source



# + 2014 New Businesses

## Economic Development

### Just Opened

ACC Hays Campus  
Bank of America  
Dessert Diva Cakes  
InnerScapes  
Plum Creek Bread Basket C-Store  
Safe and Sound Storage  
Tammy Kelley Photography  
Austin ENT  
Crystal Kent, Counseling  
Cross Plants and Produce  
Your Home Health  
Browning Family Chiropractic & Wellness

### Coming Soon!

Advanced Auto Parts  
Amazing Ice Designs  
Baskin Robbins  
Carl's Jr.  
EVO Entertainment Facility  
Dunkin' Donuts  
East Chinese Buffet  
Mitchell Motor Sports  
O'Reilly Auto  
Sleep Experts  
Wal-Mart  
Evans Medical Building  
Kids Dental Works  
New Haven Assisted Living Center  
Warm Springs Rehab Hospital



## Kyle Chamber



Partners with the city of Kyle to provide tourism services and visitors center.

Essential resource for small businesses looking to locate or expand in Kyle.



# Planning

## 2013 Accomplishments



- Completed ETJ negotiations with San Marcos on Kyle's southeast side.
- Revised the Comp Plan, adding a regional node at Center Street & IH-35.
- Annexed 285 acres of land into the City of Kyle.
- Passed the City's first tree preservation Ordinance.
- Streamlined platting and site plan approval times.



# Planning

2014 Goals

- ✓ Review the Plum Creek PUD ordinance
- ✓ Complete comp plan updates recommended from 2013
- ✓ Make recommendation regarding the proposed Lone Star Rail district
- Review the landscaping ordinance
- Prepare ETJ management plan
- Multi-family Developments Under Review
  - Amberwood multifamily – 160 units on 7.6 acres
  - The Trails at Plum Creek – 248 unites on 17.8 acres





# Parks Department

Polar Bear Splash at the Pool





## Parks Department

+

1,095 total acres of parkland

50 kickball teams participated in our three 2013 kickball seasons

27,000 total guests at all Specials Events and Community Programs

71,000 total recreational program participants

[www.KylePARD.com](http://www.KylePARD.com)



## Kyle Police Department and Community Outreach

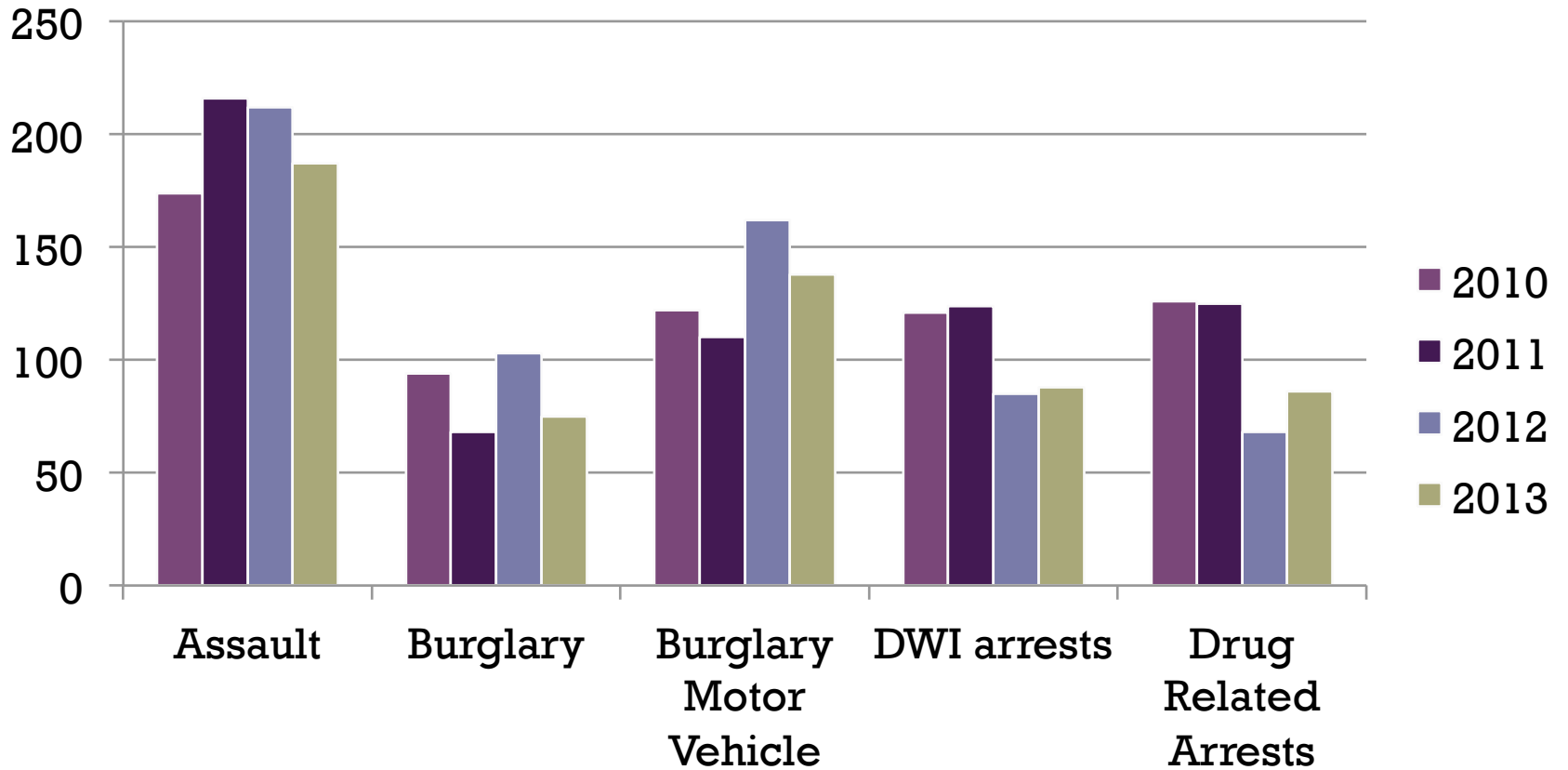
+

Known as the Special Services Bureau, a dedicated team of officers perform a wide variety of community outreach services in and around Kyle. Some of these duties include serving in the Police Honor Guard and participating in National Night Out.



# Police Department Statistics

(The Good News)







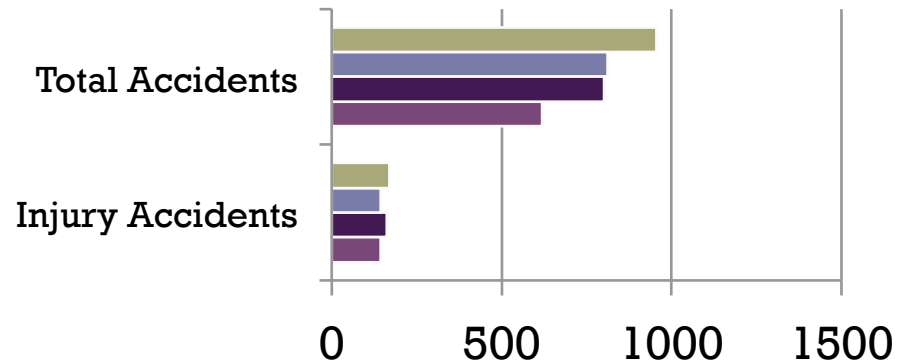
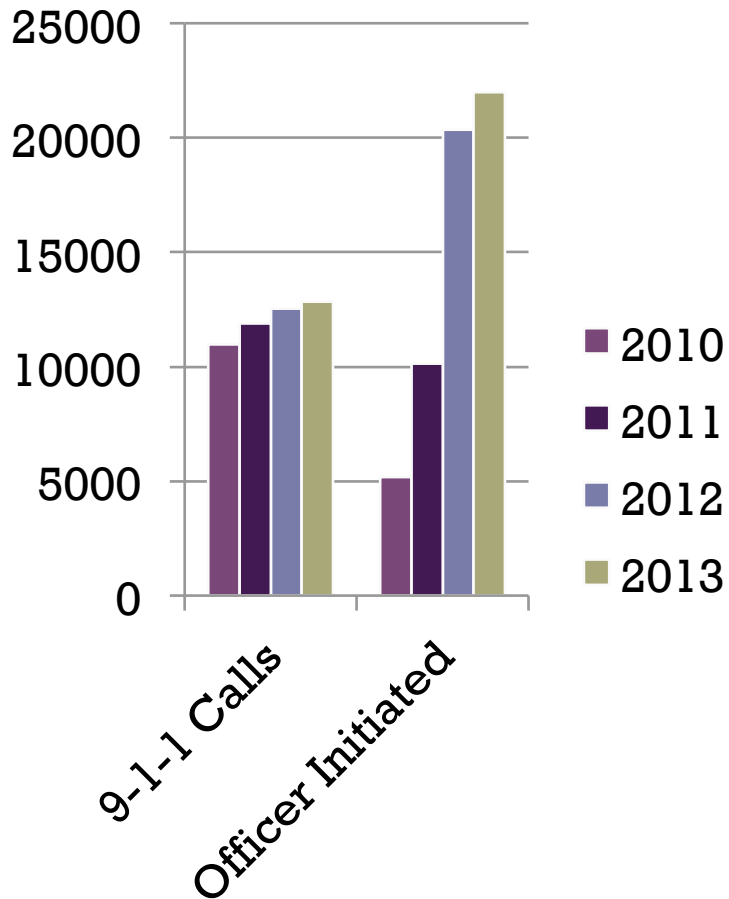
# Citizens Police Academy

and Alumni Association

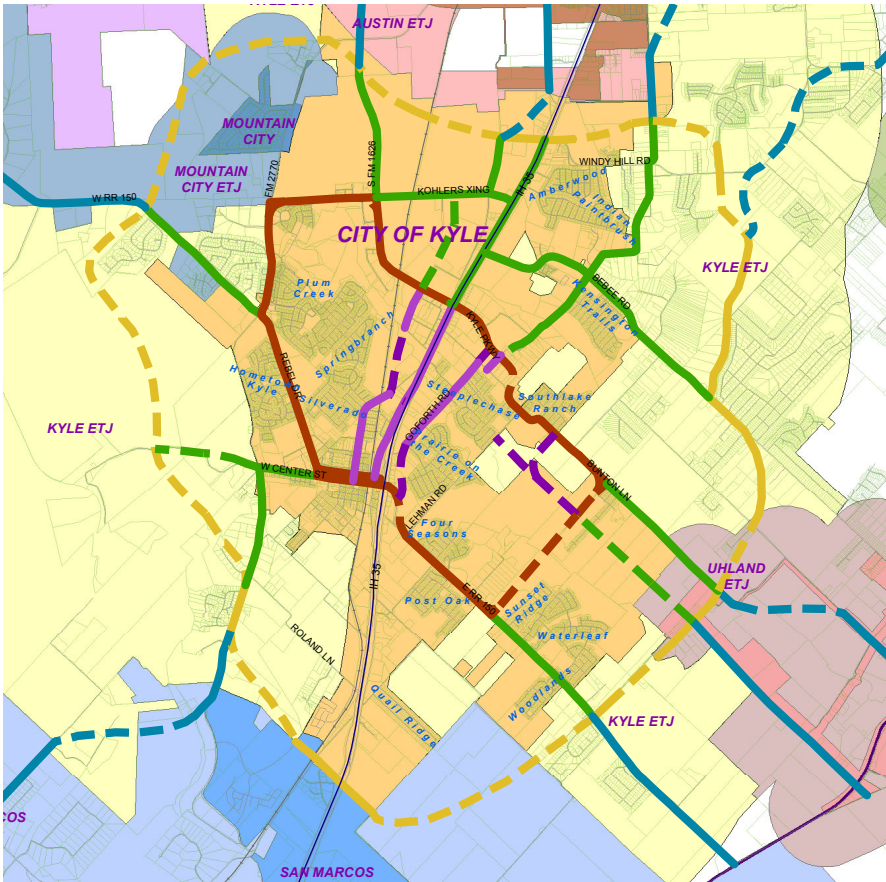


# Police Department Statistics

(The Challenging News)



Total workload increasing annually, placing higher burdens on current Police officers.



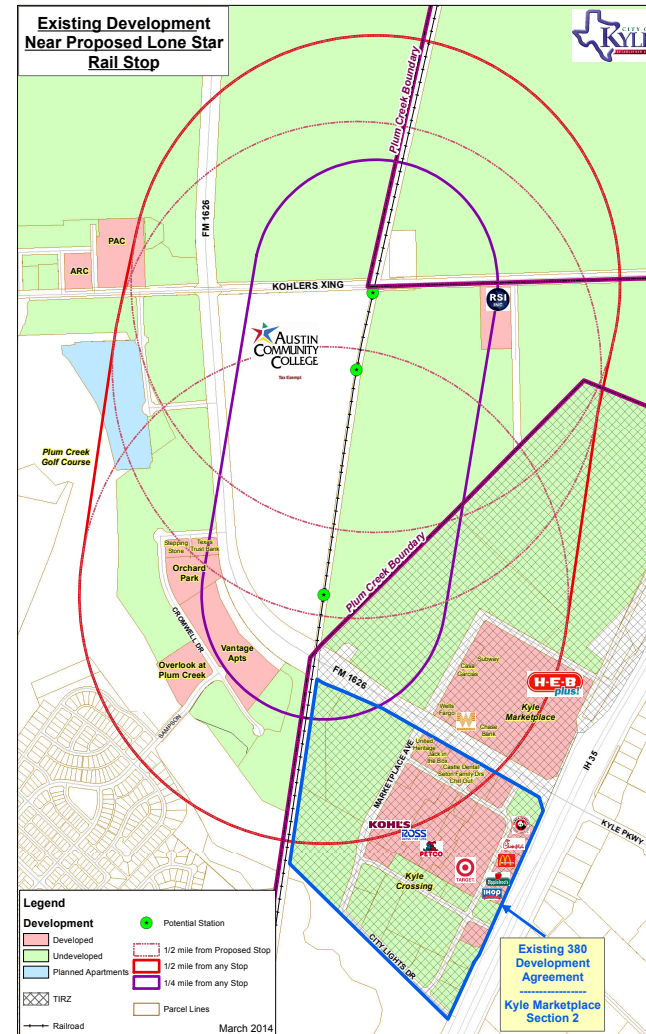
## + Transportation

Road bonds won approval from the voters in 2013

Five roads included: Burleson, Buntan, Goforth, Lehman, and Marketplace

Other Projects include sidewalks, turnaround lanes on bridges, and expansion of FM 150 East

# + Lone Star Rail District





## Education and Workforce Development



ACC opened its doors this January  
Kyle Public Library averaging 475  
check-outs a day

Summer reading program saw over  
1,100 kids and teens in attendance

City Council seeking to continue  
our close relationship with HCISD

# + Kyle Area Youth Advisory Committee (KAYAC)





# General Election May 10<sup>th</sup>, 2014

Early Voting Starts April 28<sup>th</sup>

Three council positions contested: Place 2,  
Place 4, and the Mayor

Learn more about the candidates at next  
month's Chamber Luncheon

