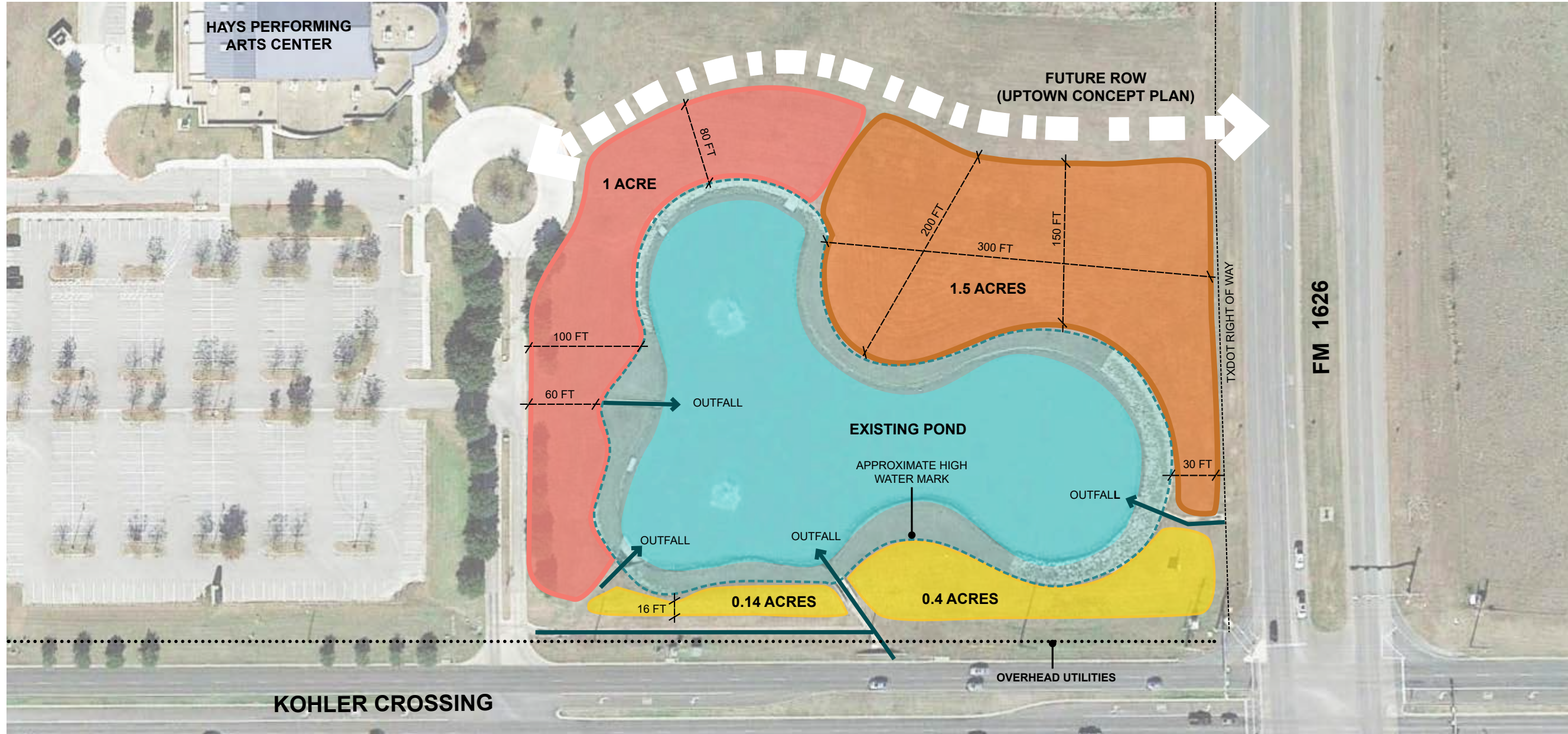


Heroes Memorial Park

Preferred Design Concept
April 30, 2020



Site Introduction



The site features a pond that was built previously for stormwater detention and beautification. It is highly visible from 1626 and Kohlers Crossing. Usable park areas surround the edges of the pond and vary in width/usability for programming.

Stakeholder Engagement

Focus groups that represent both First Responders and Military Veterans we held to gather their ideas and introduce them to the project.



Workshops were held at the Kyle VFW Hall and Kyle Police Department- participants were encouraged to share their ideas about how the park and memorial should function, as well as the look and feel that made them most comfortable.

Outcomes from feedback included the following:

- Memorial should be impressive and monumental, but also have a relaxed feel.
- The memorial should be reflective- the form or expression of the design should have a larger meaning.
- All branches of US Armed Forces should be represented.
- Law enforcement, fire fighters, EMS and emergency telecommunication services should be represented.
- Prisoner of War/Missing in Action information should be included.
- The park should include areas for a memorial paving or inscription program.
- The information in the park should include educational materials that help visitors understand the oath of service that governs armed forces or first responder services.
- Information about the constitution should be included.
- A walking trail or area for contemplative time should be included.
- Peace should be represented.
- Interpretive information should tell a story and be engaging.
- Programming in the park might include Police Week activities or other community outreach events.

Project Goals

The goals for the project are a result of stakeholder ideas, site conditions and factors that relate the park to the larger community.

- Provide a park area with a range of attractions for families.
- Honor the heroes of Kyle and Hays County with a memorable and educational memorial.
- Support the overall vision and open space framework within the Uptown development.
- Feature the natural landscape and create a park-like environment.
- Create a place that is inviting and inclusive.
- Provide space for celebration and reflection.



Project Features

The park area provides for a series of spaces and uses that work together. Each area has its own personality and role in the experience.



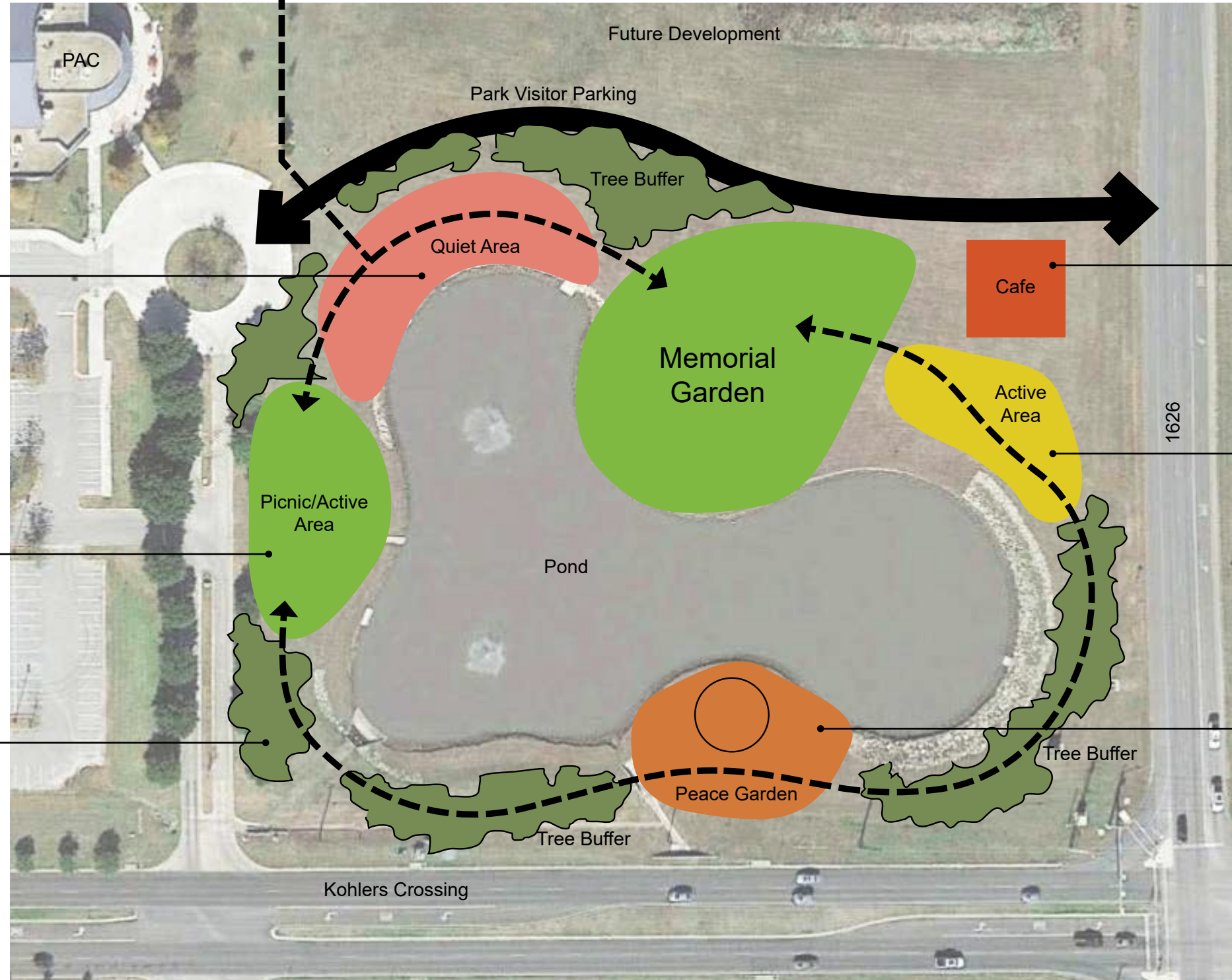
Quiet Area- Features shade and natural stone edges next to the water.



Picnic Area- Features shade and family/group recreation space.



Tree Buffers- Feature groupings of native trees and landforms.



Cafe- Features a retail building with a park-like feel and food/beverage service.



Active Area- Features a large web/net area for play or relaxation.



Peace Garden- Features unique plantings and immersive lighting installation.

Concept Summary

The design team has generated three ideas for the central garden and memorial area. Each is intended to provide a monumental and memorable landscape that allows for both celebration and contemplation.



Concept 1

The form of the memorial garden is intended to feel relaxed and inviting. It has a natural feel that blends with the forms of the existing pond.



Concept 2

The form of the memorial is intended to feel distinct and monumental. It works in contrast to the flowing forms of the pond and park area.



Concept 3

The form of the memorial garden is intended to feel inviting and monumental. The form blends with the pond at the edges, but transforms into a architectural space at the core.

Preferred Concept

The form of the memorial garden is intended to feel inviting and monumental. The form blends with the pond at the edges, but transforms into a architectural space at the core.

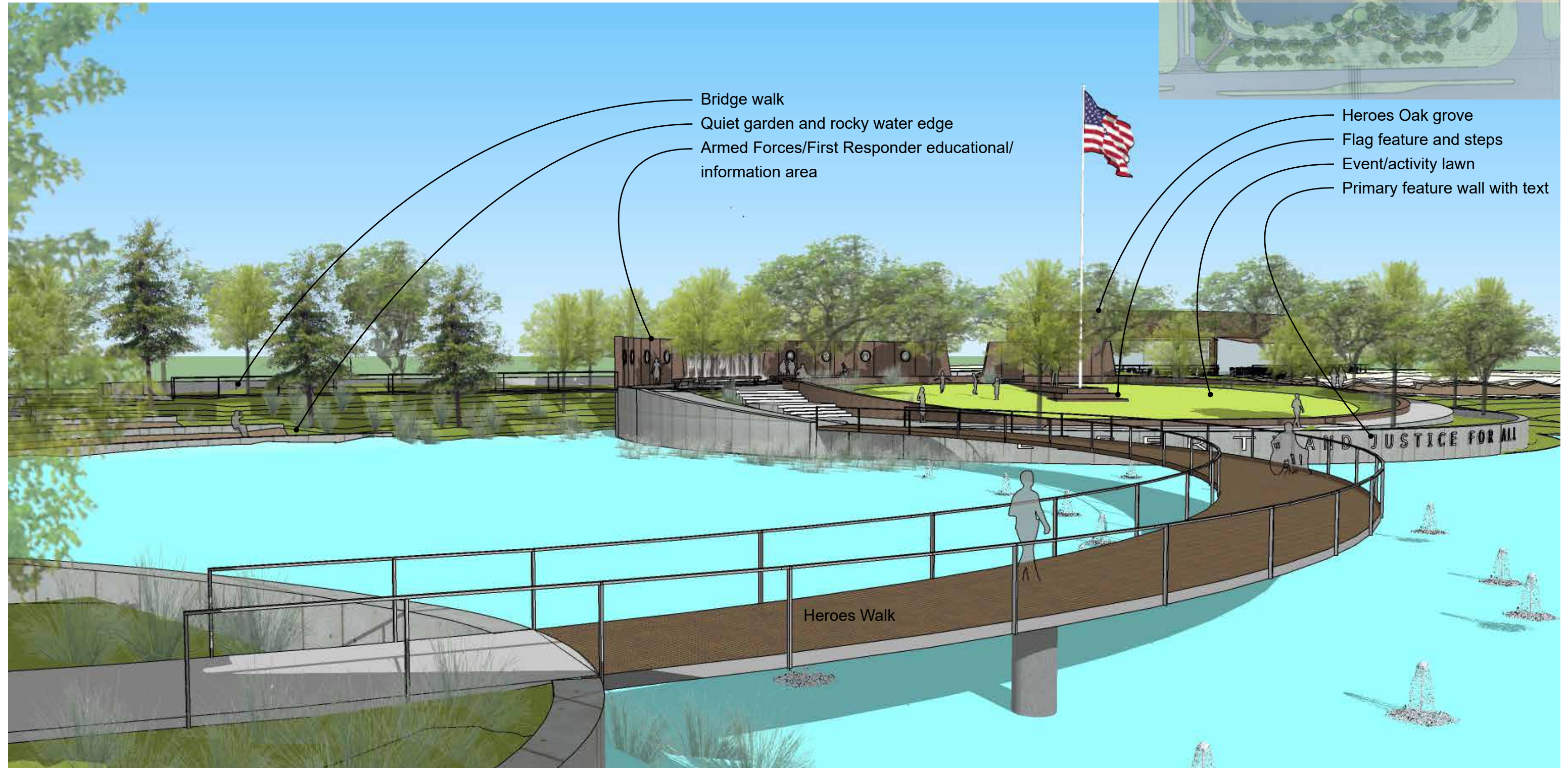
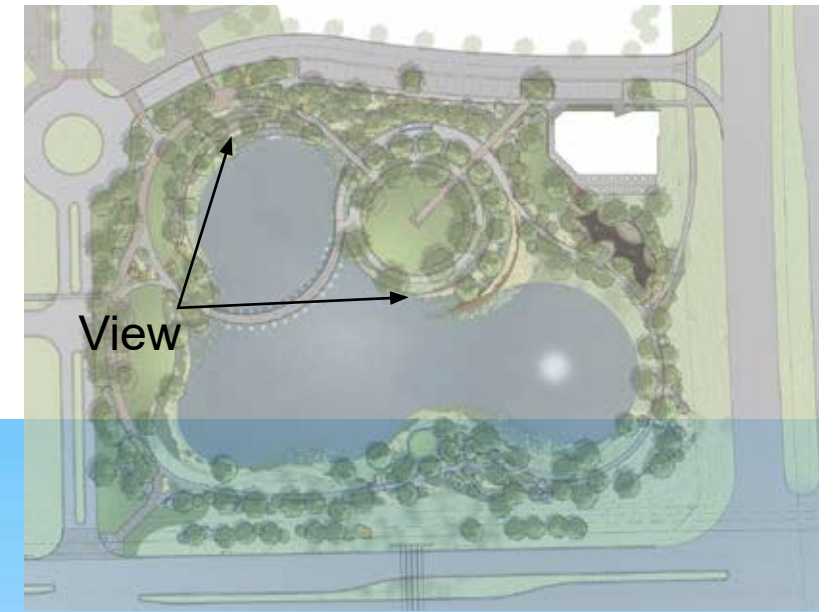


Key-

1. Cultural trail connection
2. POW/MIA feature
3. Bridge walk
4. Quiet garden and rocky water edge
5. Landform walkway and art area
6. Heroes Walk
7. Picnic and activity area
8. Tree buffer and shaded seating
9. Peace garden/night feature
10. Armed Forces/First Responder educational/information area
11. Heroes Oak grove
12. Stone jetty and landform
13. Bioswale and rain gardens
14. Event/activity lawn
15. Playful garden/hangout area
16. Primary feature wall with text
17. Priority visitor parking

Heroes Walk

The park features a "Heroes Walk" that connects the event lawn and main memorial garden to the quiet edge of the park. The bridge hovers over a series of water jets, creating an immersive sound and experience.



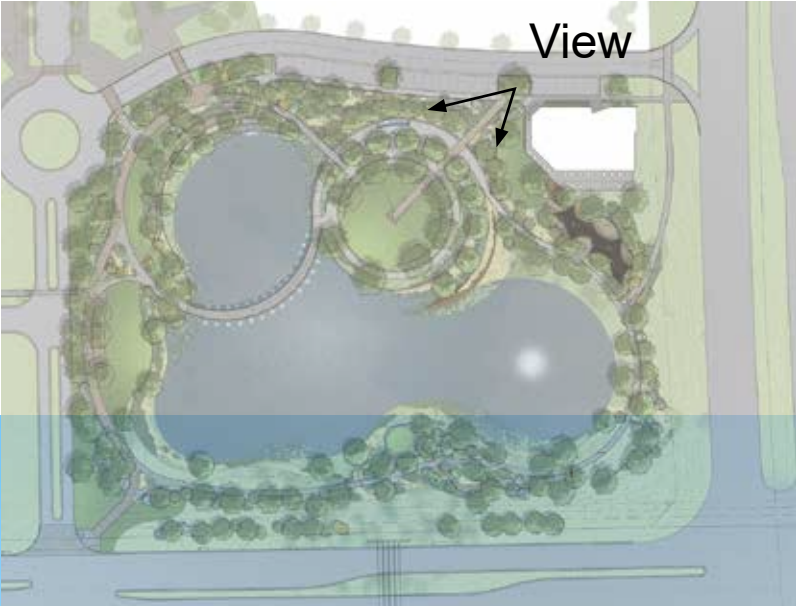
Education/Information Feature

The primary information area within the garden features a large stone canvas that is interrupted by a water wall. Garden areas, shade trees and the sound of water will make the area comfortable to linger in during hot months.



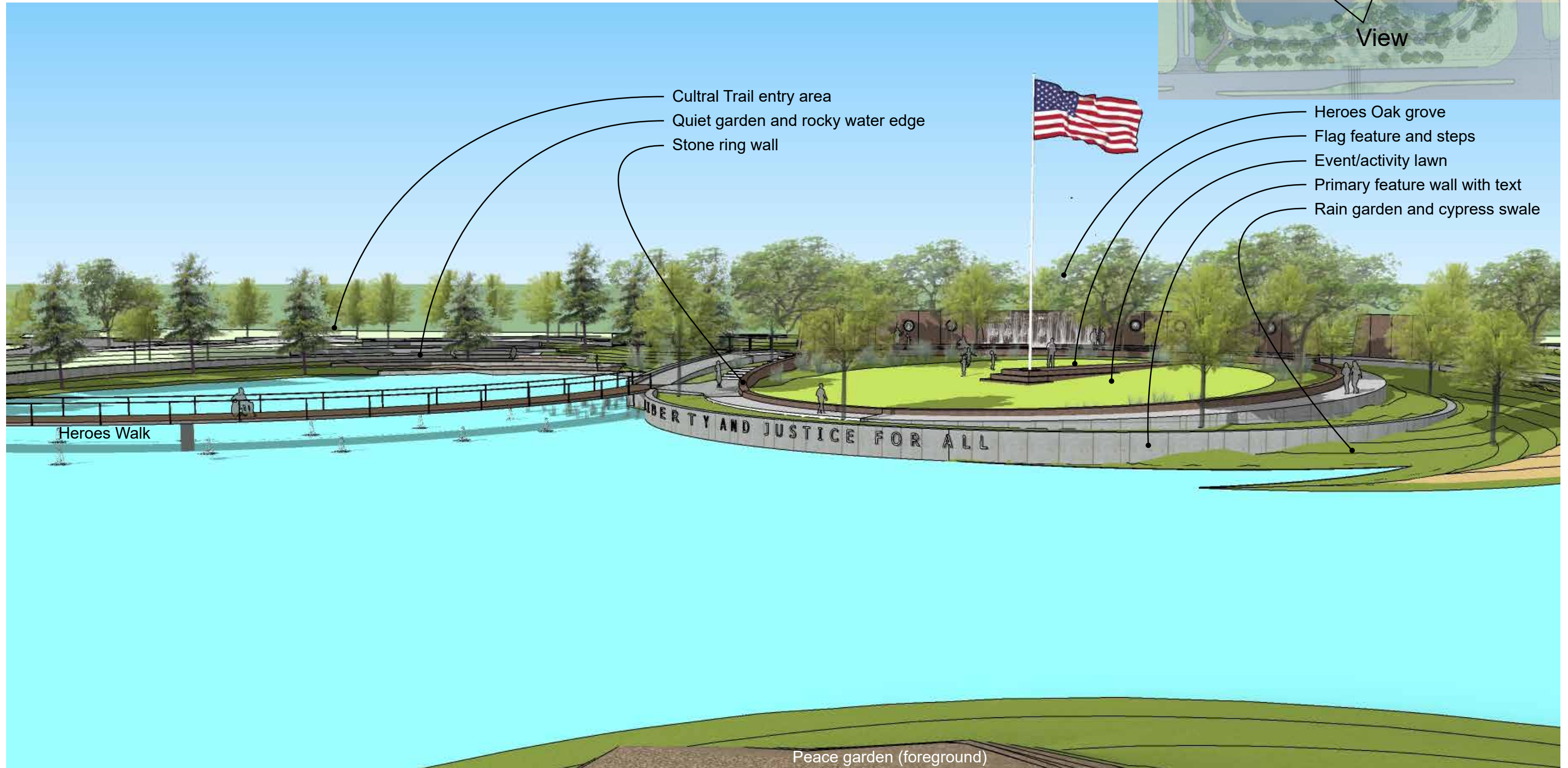
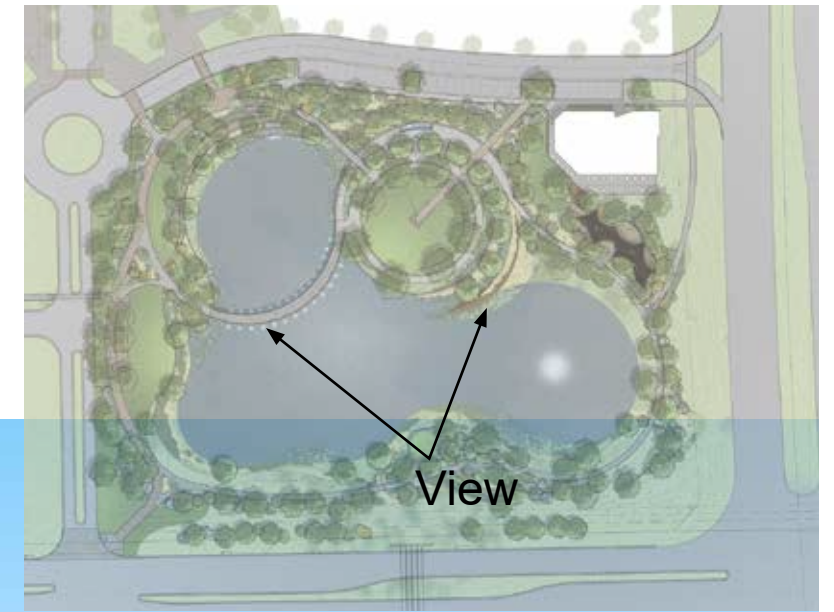
Arrival Portal

The memorial garden is connected to the park by 4 main routes. Each provides a unique experience and viewpoint.



Memorial Garden

Views toward the Memorial Garden are diverse and give the visitor reasons to explore the entire park. The core of the park is wrapped by rain gardens and a row of cypress trees that make the feature feel carved into the landscape.



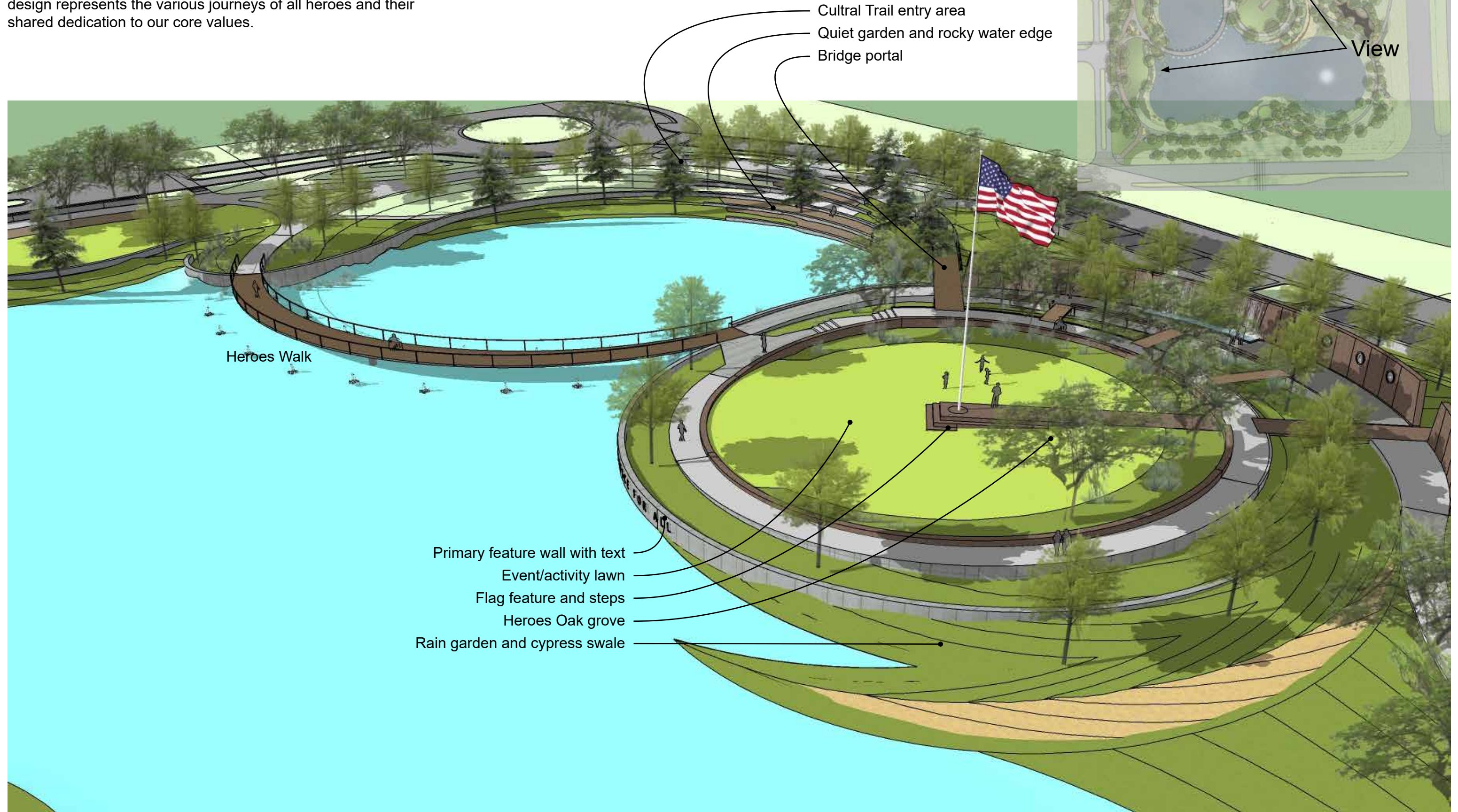
Activity Lawn

The memorial garden is connected to the park by 4 main routes. Each provides a unique experience and viewpoint.



Memorial Garden

The layout of the park includes layers of looping pathways, which eventually settle as a perfect circle at the core. This design represents the various journeys of all heroes and their shared dedication to our core values.



Next Steps...

